

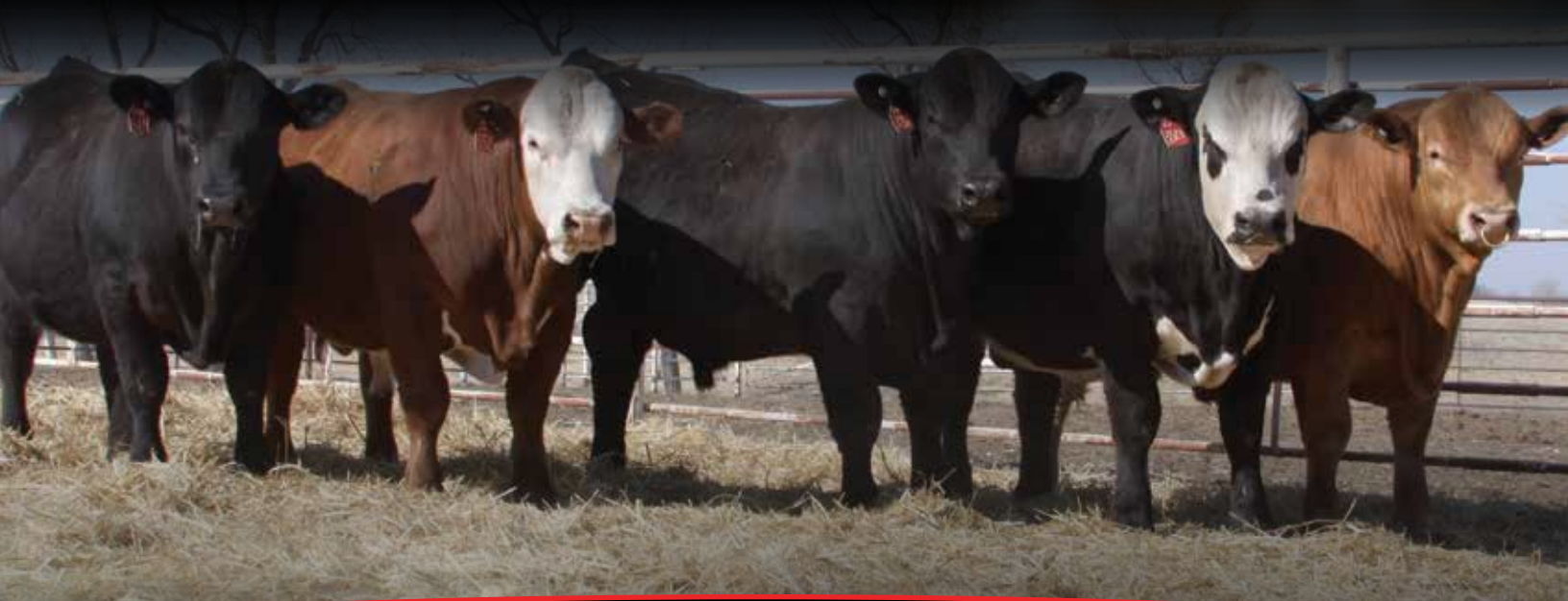
# Circle Ranch

## 18th Annual

### “Going to Grass” Production Sale

**Saturday, April 5, 2025**

1:00 PM CST in Canton, KS



*Building a Legacy for Over 30 Years*

**Offering Gelbvieh,  
Hereford & Gelford**

**Circle S Legacy Barn**

1656 28th Ave., Canton, KS 67428



# Circle Ranch

## 18th Annual

“Going to Grass” Production Sale

Saturday, April 5, 2025 • 1:00 p.m. CST

Sale Location: 1656 28th Ave., Canton, KS 67428

### Circle S Ranch

PO Box 239, Canton, KS 67428

Home 620-628-4621

John Cell 620-654-6507

Johnny Cell 620-654-6731

[circle\\_s@hometelco.net](mailto:circle_s@hometelco.net)

David Tripp, farm operations manager

### Guest Consignors

Dan and Linda Brooks - H 785-456-2706 C 785-458-9504

Road Runner Ranch - Johnny Herrman - 620-855-0063

Goose Creek Cattle Company - Josh Whitehill - 620-229-3478

Hermes Cattle Company - 620-855-0063

Kim Klinkerman - 620-242-9240

Knepp Farms - Andrew Knepp - 620-200-3523

MAKE Farms, LLC, Kevin & Mandi Blackwell - 620-480-1432

Jerad Patry - 316-214-5636

Cogan Phillip Schilling

Kendall Steinart - 785-387-1675

Please bring your  
catalog with you  
to the sale!



Dear friends, customers - new and old!

We welcome you to our 18th annual “Going to Grass Sale.” Again, this winter has had it’s challenges for sure, but we all survived (so far - I hope).

“WOW” is the only word that comes to mind. With the current prices and the forecast for the future of the beef industry - just WOW! There are a couple of things to think about. 1) Are you, as a beef producer maximizing your ability to produce the maximum beef with your cow herd? If you run a British breed based herd, cross breed with the continental breed of choice - Gelbvieh - to maximize heterosis. Heterosis will lead to greater weaning weights....and at \$2.50 - \$3 per pound, that’s a big difference. A 30 pound increase at weaning @ \$3/pound - \$90/calf \* your calf crop. My wife hates me saying it, but it is who I am - ‘the definition of an idiot is doing the same thing time after time and expecting a different outcome’. 2) Be thankful to be in

the beef business. Carla and I are very thankful for this business. It has allowed us to raise our kids outdoors, side-by-side; not always fun and games, but together. That is something money cannot buy. Passion and persistence. 3) Last but not least, another generation joins us in the offering this year. We are more than excited to welcome our oldest grandson - Cogan Schilling - as a consignor to the sale. GaGa and PopPop are very proud of this!

Please look over this sale offering as we believe it is the best from top to bottom to date. Thank you for your confidence and your business in the past and the future. We appreciate you!

Sincerely, John Shearer

View lot videos online:



or [www.circlesgelbvieh.com](http://www.circlesgelbvieh.com)

### Directions to Sale Facility - Canton, KS

From McPherson, KS (corner of I-35 and Hwy 56) 11 miles east to Canton, 2 miles north to Mohawk, 1 mile east, 1/2 north follow the signs.



## Sale Day Phone Numbers

John Cell: 620-654-6507  
Johnny Cell: 620-654-6731

## Auctioneer

Garren Walrod.....785-565-1221

## Livestock Representatives

Mike Samples.....785-826-7884  
Jim Crowthers.....785-452-5503  
Brandon Frederick.....620-204-0841  
Dylan Bair, *special assignment*.....620-899-6818  
Tom Strahm, *special guest*.....785-547-7999  
*Commercial Marketing Director, AGA*

## Directions

From McPherson, KS (corner of I-35 and Hwy 56)  
11 miles east to Canton, 2 miles north to Mohawk,  
1 mile east, 1/2 north follow the signs.

## Delivery

- Free anywhere in the state of Kansas
- Purchases of \$7500 or more - first 500 miles are free
- Purchases of 5 head or more - first 500 miles are free

## Catalog

Rural Route Creations, Jocelyn Washam...417-838-5546  
[www.ruralroutecreations.com](http://www.ruralroutecreations.com)

## Guarantee

First Season Breeding Guarantee: Bulls that are purchased for **\$5000** or more that are injured within the first 30 days of the first breeding season will be guaranteed with a sale credit equivalent to the purchase price minus salvage value. The sale credit will be valid at the 2026 Going to Grass Sale. Contact Circle S promptly (within 5 days of the injury) so the mutual decision regarding the disposal (or return) of the bull may be made.

## Herd Health

All cattle have been vaccinated and have been poured with Dectomax. Bulls have passed a breeding soundness exam. Necessary health papers will be available for each sale animal. All vaccinations and animal health products used by Circle S are Zoetis Animal Health Products.

## Feeding Arrangements

We will keep your cattle purchased, free of charge, until April 15, 2025, or you will get a \$50 credit per lot purchased if you haul it yourself ON SALE DAY. After April 15, there will be a \$7/head per day feed/care charge. All purchases are final as of sale day and buyer assumes all risk.

## Circle S Ranch Sight Unseen Warranty

If you cannot attend the sale and wish to purchase a bull or female please contact us. On sale day, we will assign a third party to call you and review the animal(s) before the sale. We will have someone on the phone to bid for you, or you may ask one of the Livestock Representatives to bid for you. Your bid will remain confidential and will be handled professionally. When we deliver the bull or heifer to you, if it is not what you think we described, we will refund 100% of your purchase price. The catalog and the online videos will assist you in making your purchasing decisions.

## Lodging

Country Haven Inn-Hillsboro, KS....620-947-2929

### Other Lodging - In McPherson

Holiday Inn Express.....620-241-5566  
Candlewood Suites .....620-718-2053  
Best Western Plus.....620-480-2667

**CIRCLE S**  
*Genetics*

are the mother breed  
of the beef industry!

## Sale Schedule

### Friday, April 4, 2025

4:00 - 6:00 p.m. • Cattle on Display

### Saturday, April 5, 2025

9:00 a.m. • Coffee & Cinnamon Rolls

11:30 a.m. • Circle S Hamburger Fry

1:00 p.m. • Sale Begins

7:30 p.m. • Barn Party @ The Legacy  
Barn featuring *Artifact*

Dear Son,  
Every sale day, I try to thank you for everything you do for me, the ranch and your family. I never can get the words out, I'm sorry! Please know how much you are loved and appreciated every single day! Thank you from the bottom of my heart!

Love,  
Dad



Please take a look at each and every bull offered here as we believe we are meeting the demands of the market and our customers. These bulls are bred for assistance-free calving, performance and most importantly, functionality.

Take your pick - a very sound and stout set of bulls!



lot 1



**CIRS 580L**

AMGV1618651 | 7/15/2023 | 580L

Bull | Homo Polled | Red | PB 99.9%

BW
73
WW
685

MGA BIG GULP 711E

[ MGA MOONSHINE 407B  
MGA POCAHONTAS 338A

OVER OVER HIRED 507H

OGSG OVER CLAIRE 507C

[ GGGE 3G ZIP LINE 266Z  
OGSG OVER SPLENDID 07X

CIRS DECADE 278U2

[ EGL FOSTERS LO17 ET  
EGL GAIL M278

CIRS 80D

WGN LADY LEGACY 80U

[ OZZ IDEAL LEGACY 56R  
OZZ HALLMARK LADY 134M

CE	BW	WW	YW	MK	TM	CEM	ST	YG	CW	REA	MB
13.8	-0.8	66	90	24	57	6	11.5	-0.26	28	0.73	0.07

What a way to start the catalog with this one! Tons of quality in this guy! Age-advantage bull that does so much so well! One of the last hired calves that will be sold as we lost him to an injury! Tie into this one - he's worth it! Herd bull alert!



Pen of Three Gelbvieh Bulls

Oklahoma City, Oklahoma



**HRRR 632L**

AMGV1618670 | 7/20/2023 | 632L

Bull | Homo Polled | Red | PB 99.9%

BW
78
WW
686

MGA BIG GULP 711E

[ MGA MOONSHINE 407B  
MGA POCAHONTAS 338A

OVER OVER HIRED 507H

OGSG OVER CLAIRE 507C

[ GGGE 3G ZIP LINE 266Z  
OGSG OVER SPLENDID 07X

TOG TWIN OAK STAR 194W ET

[ MCFG MIDDLE CREEK STAR 10S ET  
DCSF POST ROCK TWILA 223M2

HRRR HRRR TWIN OAK 71AD

CIRS 2325Z

[ LFA 278RT  
JCGR BAR GT MS 402M ET

CE	BW	WW	YW	MK	TM	CEM	ST	YG	CW	REA	MB
15.2	-1.2	64	91	26	58	8	10.4	-0.26	33	0.79	0.08

Extremely soft-made bull that is deep in all aspects! An age-advantage bull that's smooth-shouldered; should make some top end females for years to come. Could be a heifer bull!



lot 2



### 3 CIRS 9518L

AMGV1618644 | 8/18/2023 | 9518L  
Bull | Homo Polled | Red | PB 93.8%

BW
59
WW
694

DCH HILLE C169  
DCH HILLE H719 HAGAR  
DCH HILLE C205

DCHD ARIAT 127A  
DCH HILLE A105  
DCH HILLE Y165  
DCH HILLE S107 SEA BREEZE

CMR PROTEGE 121E ET  
DBRG MS PROTEGE 9518G  
DBRG MS WATCHMAN 5553C

DDGR DDGR NOBLE MAN 79B  
DDGR MANDY 32S  
VRT LAZY TV WATCHMAN W021  
DBRG MS ASTRO 3510A ET

CE	BW	WW	YW	MK	TM	CEM	ST	YG	CW	REA	MB
15.6	-1.5	69	108	18	52	9	12.2	-0.24	32	0.73	0.27

A big, stout, high percentage bull. Big foot and bone! He's a good candidate for an outcross if you are deep in the Circle S program and need to inject some different genetics that will continue to take you in the right direction. HOMO POLLED!



*Thank you to everyone who supports our program throughout the year.  
We appreciate your business and friendship.  
Cheers to another year in the cattle business.*

### 4 HERC 7107L

AMGV1618645 | 8/24/2023 | 7107L  
Bull | Homo Polled | Red | PB 99.9%

BW
73
WW
625

DCH HILLE C169  
DCH HILLE H719 HAGAR  
DCH HILLE C205

DCHD ARIAT 127A  
DCH HILLE A105  
DCH HILLE Y165  
DCH HILLE S107 SEA BREEZE

FHG FLYING H MR TRACTION 45B  
DBRG MS FH TRACTION 7107E  
DBRG MS BOO BOO 056X ET

RWG TRACTION 7412  
FHG FLYING H BLACK JACK 60W  
GKT BOO BOO 155E  
DBRG FOXI ROXI 8N

CE	BW	WW	YW	MK	TM	CEM	ST	YG	CW	REA	MB
11.5	1	77	118	26	64	6	17.2	-0.21	33	0.64	0.11

A dark red bull that's got plenty of length and power! An outcross pedigree to our females! Lots of growth in this guy! Top 5% ST 10% WW TM 15% YW \$COW 20% PG30 \$C.



lot 4

### 5 CIRS 417L

AMGV1618647 | 9/2/2023 | 417L  
Bull | Homo Polled | Homo Black | PB 99.9%

BW
71
WW
558

FMGF BLUE'S IMPACT 001X  
GHGF YOUNG GUN C310  
GHGF CONTESSA 310T

HYEK BLACK IMPACT 3960N  
FMGF ONCE IN A BLUE MOON ET  
GHGF MATE 47P  
JBOB 3103K ET

JOB DANELL RASCAL 25Z  
TSP 417B  
TSP PARIS 922P

JOB DANELL RESOLUTION 26U ET  
KHR JEANETTE 510R  
SEGA M I A 158M  
SEGA JASMYNE 922J

CE	BW	WW	YW	MK	TM	CEM	ST	YG	CW	REA	MB
14.5	-1.1	51	74	29	54	4	10	-0.34	15	0.68	0.04

Homo Black, Homo Polled bull whose EPD's show he should work on heifers! Top 5% BW, 20% CED. Moderate-framed bull that's flat good once you study how much red meat and dimension is in this one! Here's a no miss mating! Loads of quality and future in this guy!

### 6 CIRS 628L

AMGV1618674 | 9/2/2023 | 628L  
Bull | Scurred | Black | BA 71.9%

BW
69
WW
654

SHERMAN  
DDM MR SHERMAN TANK  
CKS MS BELGRAD K2

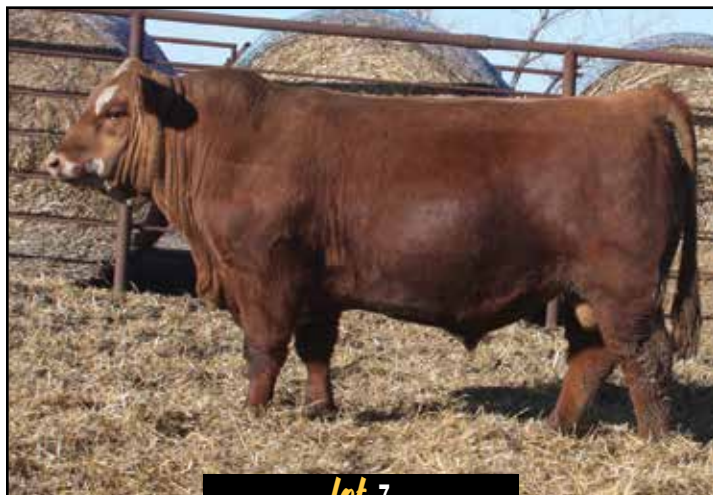
FLORETT  
KATRINE  
CGA BELGRAD 62837  
HGH MISS VIKING 33F

SEDGWICKS FINAL ANSWER Y307  
OZZ OZZ KARA 28D  
OZZ 24Y

S A V FINAL ANSWER 0035  
SEDGWICKS LUCY W307  
OZZ IDEAL DIRECTION 8N  
OZZ 59U

CE	BW	WW	YW	MK	TM	CEM	ST	YG	CW	REA	MB
13.3	0.8	70	111	28	64	10	16.5	-0.23	32	0.53	0.19

If you're wanting a big growth bull with a ton of go, here's your guy! Don't discount his scurs! When looking at his pedigree, you are reading it right! He is an old school Sherman Tank out of an awesome balancer cow! Lots of growth and go in this bull who should raise calves that will flat grow! Top 1% YG CFAT, 10% CREA CEM, 15% Milk, 20% PG30 CW.



lot 7

**7**

**CIRS 948L**

AMGV1618961 | 9/2/2023 | 948L

Bull | Polled | Red, white face | PC 75%

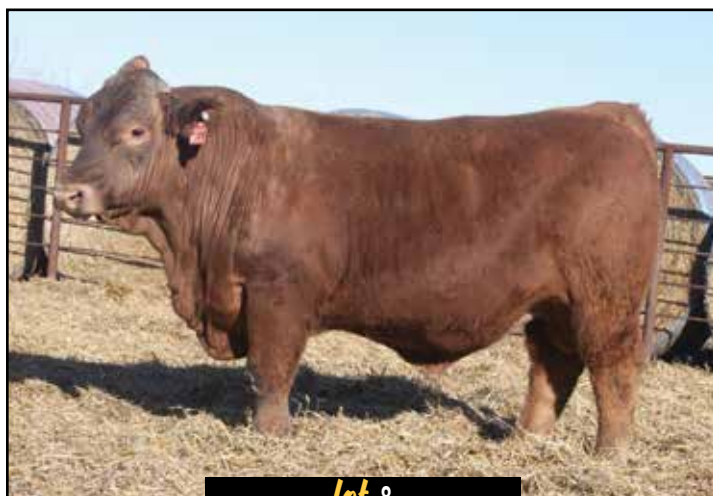
BW
74
WW
605

CIRS DECADE 278U2  
**CIRS OVERDRIVE**  
 DCSF POST ROCK MARY 154N1  
 CIRS DECADE 278U2  
**CIRS HS48G**  
 RH DOMINETTE 14029

EGL FOSTERS L017 ET  
 EGL GAIL M278  
 CTR KING 067K  
 DCSF POST ROCK MARY 67H2  
 EGL FOSTERS L017 ET  
 EGL GAIL M278  
 RH L1 DOMINO 01029  
 RH DOMINETTE 00047

CE	BW	WW	YW	MK	TM	CEM	ST	YG	CW	REA	MB
12.1	0.7	61	82	16	47	3	9.1	-0.27	20	0.61	-0.07

A 3/4 Gelford with tons of pigment! This guy is flat good! Wide as a train that's sure to sire some top-end feeder cattle! If you're in the market for a Gelford, he should be one that's on the top of your list!



lot 8

**8**

**CIRS 620L**

AMGV1618665 | 9/5/2023 | 620L

Bull | Scurred | Red | PB 93.75%

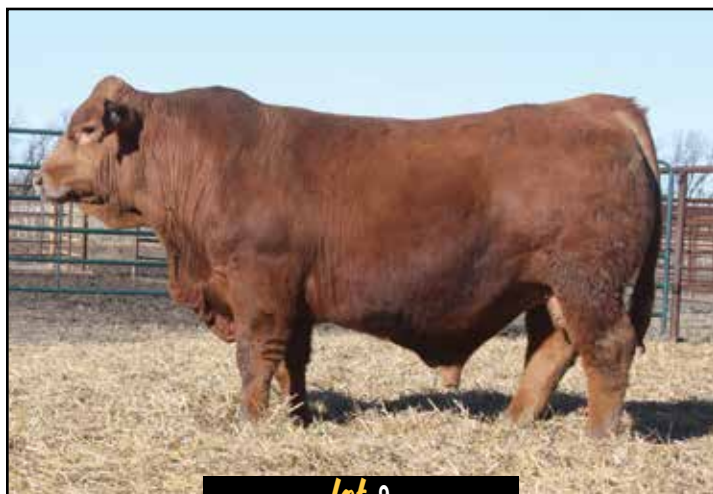
BW
74
WW
676

DCSF POST ROCK POWER BUILT 37B8  
**CIRS 416G**  
 CIRS 16B  
 SLMG TRACTION 1C  
**CIRS 2TD**  
 CIRS 2JT

JRI TOP PRODUCER 282Z3  
 DCSF POST ROCK WILMA 298Z8 ET  
 CIRS DECADE 278U2  
 LDJ MS GERANIUM T526  
 RWG TRACTION 7412  
 CJY CLAYJOHNS Z615N  
 CIRS RAMON  
 CIRS MS PRIMETIME LOU

CE	BW	WW	YW	MK	TM	CEM	ST	YG	CW	REA	MB
10.9	1.6	78	116	24	63	5	14.2	-0.28	37	0.79	0.04

A Bob son that is flat good! Yes, he's scurred. But wow, this one is good from a phenotype standpoint! Tons of growth and power with plenty of rib! Buy him with confidence to sire steers that will top the market, as well as females your neighbors will be stopping to look at! Top 5% CFAT, 10% CREA CW DOC, 15% YG.



lot 9

**9**

**CIRS 932L**

AMGV1619058 | 9/12/2023 | H932L

Bull | Polled | Red | PC 65.6%

BW
77
WW
603

JRI TRADE SECRET 253G486  
**DDGR LOBO 5J**  
 DDGR 124G  
 GHGF YOUNG GUN C310  
**CIRS 932L**  
 RH DOMINETTE 02037

JRI GENERAL PATTON 213B97 ET  
 JRI MS SECRET BLEND 253E386 ET  
 VRT LAZY TV NOTCH A781  
 DDGR LILY 45U  
 FMGF BLUE'S IMPACT 001X  
 GHGF CONTESSA 310T  
 XP L1 DOMINO 01065  
 RH DOMINETTE 4024

CE	BW	WW	YW	MK	TM	CEM	ST	YG	CW	REA	MB
12.8	1.5	57	82	18	47	3	12.8	-0.19	12	0.32	0.07

Stud alert!!! A 3/4 solid red Gelford! If you like them whole bellied and wide as a truck and still gets out and moves so freely, you'll love this guy! This guy is flat good! Look him up sale day, and you won't be disappointed in the amount of true power in this beef bull! Top 10% CFAT, 20% YG, 25% DOC.



# 10 CIRS HRRR H33L

AMGV1618668 | 9/19/2023 | H33L  
 Bull | Polled | Red, white face | PC 40.6%

BW
73
WW
574

JRI TRADE SECRET 253G486  
**DDGR LOBO 5J**  
 DDGR 124G

JRI GENERAL PATTON 213B97 ET  
 JRI MS SECRET BLEND 253E386 ET

VRT LAZY TV NOTCH A781  
 DDGR LILY 45U

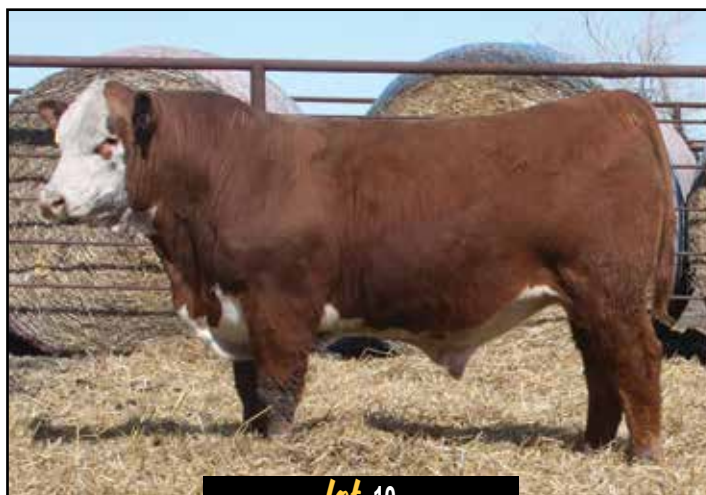
CIRS DECADE 278U2  
**CIRS H33D**  
 BT MS DOMINETTE 340

EGL FOSTERS LO17 ET  
 EGL GAIL M278

GL1 DOMINO 6012A  
 BT MS DOMINO 452

CE	BW	WW	YW	MK	TM	CEM	ST	YG	CW	REA	MB
10.1	2.1	60	86	11	37	4	12	-0.22	16	0.44	0.04

A really good older Gelford that's big-topped, powerfully constructed with plenty of rib shape! Pigment around both eyes out of a really good Gelford female! Really good bull! Put him on your Angus cows and watch him make money!



lot 10

# 11 CIRS KLINK

AMGV1619183 | 9/30/2023 | 8421L  
 Bull | Homo Polled | Red | PB 87.5%

BW
78
WW
610

HDG HILLSDOWN FINNEGAN 4F  
**LRSF CORVETTE J168**  
 LRSF SNAZZY C79

DL JEN-TY DYNAMITE  
 HDG AVERY 13D

RUP RUPPLE YUKON 301P  
 LRSF SNAZZY Y26

CIRS M56E  
**CIRS KLINK 8421**  
 CIRS 2102B

DCSF POST ROCK POWER BUILT 37B8  
 MLLR 44M

CIRS FOUNDATION 2215Z  
 CIRS 2102Z

CE	BW	WW	YW	MK	TM	CEM	ST	YG	CW	REA	MB
13.5	-1.4	66	97	24	57	8	13.5	-0.18	27	0.52	0.08

When Kim said he had a good one, he wasn't kidding. Here is a high percentage HOMO POLLED fall bull. He's the type that should make some really nice replacement heifers. His Granddam was probably 16-17 years old when she finally left the herd. Top 10% in WW, YW and TM.

*"Using Circle S genetics has definitely helped me reach closer to my goal of raising bulls with above normal power and performance! And females with great udders that perform well on marginal quality feeds that I've been forced to feed in the last few years of overwhelming drought."*

**-Bollinger Cattle Co. - Andale, Kansas**

# 12 CIRS 326L

AMGV1619059 | 10/5/2023 | 326L  
 Bull | Homo Polled | Red | PB 90.6%

BW
81
WW
606

JRI TRADE SECRET 253G486  
**DDGR LOBO 5J**  
 DDGR 124G

JRI GENERAL PATTON 213B97 ET  
 JRI MS SECRET BLEND 253E386 ET

VRT LAZY TV NOTCH A781  
 DDGR LILY 45U

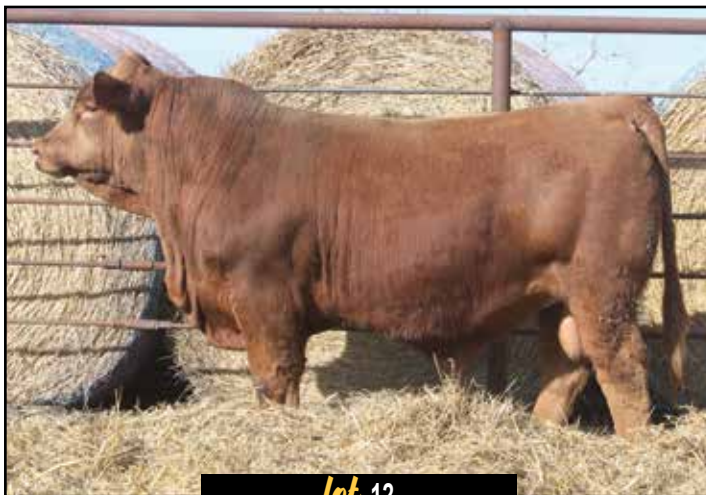
CIRS DECADE 278U2  
**CIRS AL26 ET**  
 BDCG FINE LADY 643K

EGL FOSTERS LO17 ET  
 EGL GAIL M278

DDM MR SHERMAN TANK  
 DAR FINE LADY

CE	BW	WW	YW	MK	TM	CEM	ST	YG	CW	REA	MB
9.7	2.6	69	96	21	55	3	14.9	-0.31	16	0.59	0.07

Moderate framed bull that's flat packed full of red meat! Tons of muscle and mass packed into this guy! He might not have the frame some of the others have but his width makes up for it! Top 4% DOC, 5% CFAT, 10% YG.



lot 12

### 13 CIRS 988L

**AMGV1619057** | 10/12/2023 | 988L  
**Bull** | Homo Polled | Red, white face | PC 65.6%

BW
70
WW
582

JRI TRADE SECRET 253G486  
**DDGR LOBO 5J**  
 DDGR 124G

JRI GENERAL PATTON 213B97 ET  
 JRI MS SECRET BLEND 253E386 ET

VRT LAZY TV NOTCH A781  
 DDGR LILY 45U

GHGF YOUNG GUN C310  
**CIRS H88G**  
 CTR L1 DOMINETTE 4078B

FMGF BLUE'S IMPACT 001X  
 GHGF CONTESSA 310T

JA LW DOMINO 0413X  
 HH MISS ADVANCE 9222W

CE	BW	WW	YW	MK	TM	CEM	ST	YG	CW	REA	MB
11.7	0.8	58	84	21	52	3	13	-0.22	10	0.35	0.05

Here's a real nice Gelford. Smooth shoulder and clean in his lines. His own dam is out of consistent cow families. Heifers out of him should make really nice brood cows.

### 14 RTB NEXT DECADE 392L

**AMGV1595411** | 10/17/2023 | 392L  
**Bull** | Homo Polled | Red | PB 99.9%

BW
80
WW
655

EGL FOSTERS LO17 ET  
**CIRS DECADE 278U2**  
 EGL GAIL M278

SLC FREEDOM 178F ET  
 EGL PHOEBE G374

EGL GUIDO K051 ET  
 EGL H802

CIRS 1312C ET  
**TABB E92Y**  
 CIRS CIRS 92RY

CRAN BUDDY BOY T729  
 CIRS 2JT

JCGR BAR GT 527U ET  
 CIRS HOTT ENOUGH ET

CE	BW	WW	YW	MK	TM	CEM	ST	YG	CW	REA	MB
10.6	1.9	70	96	20	55	3	12.9	-0.32	25	0.74	-0.02

Decade fans - here's a good one. He's HOMO POLLED, big-topped, has tons of cow power in his pedigree. A bull built for longevity. His steer calves should flat get it done. Look him up!



lot 15

### 15 RTB AMERICAN EAGLE 326L

**AMGV1595409** | 10/19/2023 | 326L  
**Bull** | Polled | Red | PB 93.8%

BW
80
WW
740

DCSF POST ROCK POWER BUILT 37B8  
**CIRS AMERICAN PRIDE**  
 CIRS 2330Z

JRI TOP PRODUCER 282Z3  
 DCSF POST ROCK WILMA 298Z8 ET

LFA 278RT  
 CIRS 860U

CIRS 1312C ET  
**TABB 268E**  
 TABB MISS 268 Z

CRAN BUDDY BOY T729  
 CIRS 2JT

TABB 9334W PORK ET  
 TABB ANNA MAE 9A6W

CE	BW	WW	YW	MK	TM	CEM	ST	YG	CW	REA	MB
9.7	2.3	74	104	22	59	4	13	-0.34	36	0.96	0.02

A true beef bull! If you want a bull that is extremely powerful, long-bodied and big boned - he is it! His sire sold a few years in the sale and was a stud! This guy has a ton of power and performance to add to any herd. Top 1% CREA, 3% YG, 5% CFAT, 10% CW, 20% WW.



lot 16

### 16 CIRS UNCHAINED 621L

**AMGV1607367** | 12/25/2023 | 621L  
**Bull** | Homo Polled | Red | PB 87.5%

BW
83
WW
790

JRI GENERAL PATTON 213B97 ET  
**BCFG BUTLERS GENERAL LEE J207 ET**  
 BCFG BUTLERS MS CODE 207Z1

JRI POP A TOP 197T83  
 JRI MS EXTRAVAGANT 213T87

BCFG BUTLERS CODE RED 506T ET  
 BCFG BUTLERS MS PARKWAY 207N

CIRS OVERDRIVE  
**CIRS 2102D**  
 CIRS 2102Z

CIRS DECADE 278U2  
 DCSF POST ROCK MARY 154N1

CIRS DECADE 278U2  
 DCSF 87R6

CE	BW	WW	YW	MK	TM	CEM	ST	YG	CW	REA	MB
13.2	-0.7	64	95	26	58	4	16.4	-0.23	27	0.76	0.11

Take look at this meat wagon! Long-bodied, full of red meat and tons of power! This guy is one of the first bulls offered out of the 2023 Reserve National Champion General Lee. General Lee's calves are all really powerful, with a very unique look. And, not just having General Lee as his sire, this guy's granddam is one of our top-end cows! We are really excited about this guy's potential to sire some great calves of his own.



# 17 CIRS 02HM

**AMGV1618965** | 1/4/2024 | 02HM  
**Bull** | Homo Polled | Homo Black | PC 76.6%

<b>BW</b>
71
<b>WW</b>
764

- KHR 79B [ KHR 01Z
- TMMW MR MONTANA 231E [ KHR 267Z
- TMMW MISS GRANITE 150Z [ JKGF 43U
- [ TMMW BLK BREEZE KRUGER
- JKGF DITKA C85 [ SANDPOINT BUTKUS X797
- WOAK 02H** [ JKGF LADYBUG A012
- WOAK ANNABELLE [ WOAK NIGHTHAWK 22C
- [ KEK KEK KENYON BELLE 4K1B

CE	BW	WW	YW	MK	TM	CEM	ST	YG	CW	REA	MB
14.2	-1.5	67	100	23	56	8	14.3	-0.12	28	0.47	0.14

Big time beef bull! Long-made, loaded with tons of meat, and true dimension! Homo Black and Homo Polled! Could work on heifers! Top 15% CW CREA, Top 20% BW, Top 25% FAT RFI CEM YW.



lot 17

# 18 CIRS 250M

**AMGV1618960** | 1/28/2024 | 250M  
**Bull** | Homo Polled | Red, white face | PC 67.2%

<b>BW</b>
70
<b>WW</b>
624

- CIRS DECADE 278U2 [ EGL FOSTERS LO17 ET
- CIRS H7C** [ EGL GAIL M278
- JA L1 DOMINETTE 9707W [ GB L1 DOMINO 6134K
- [ JAL1 DOMINETTE 7641T
- CIRS 4611J [ CIRS RIGHT TIME
- CIRS 50K** [ CIRS 611B
- CIRS 50H ET [ CIRS KING
- [ HYEK MADENA 4960P

CE	BW	WW	YW	MK	TM	CEM	ST	YG	CW	REA	MB
12.2	2.5	76	111	21	60	3	9.2	-0.3	27	0.7	-0.25

Moderate-framed, really good bull that is long-bodied and square-made! Lots of positive in this guy! Tons of power and length of spine that's sure to sire moderate, powerful, thick calves that bust the bank at weaning time.



lot 18

# 19 CIRS 0724M

**AMGV1618662** | 1/29/2024 | 0724M  
**Bull** | Homo Polled | Red | PB 87.5%

<b>BW</b>
71
<b>WW</b>
644

- DL JEN-TY DYNAMITE [ FRL FIR RIVER RED CHILLI 451Y
- HDG HILLSDOWN FINNEGAN 4F** [ DL JEN-TY CINDY 273U
- HDG AVERY 13D [ JRI POP A TOP 197T83
- [ HDG BAYLEE 14B
- CIRS RIGHT TIME 22YF [ DCSF POST ROCK POWER BUILT 37B8
- CIRS 7242J** [ GGRR GILLY'S CPR DOLL 22Y
- CIRS 242E [ EGL FOSTERS LO17 ET
- [ BAGK MISS DAN 242Y

CE	BW	WW	YW	MK	TM	CEM	ST	YG	CW	REA	MB
16	-1.3	70	102	26	61	8	13	-0.29	18	0.65	0.04

Here's one of the sought after Finnegan sons! He could be a sleep all night heifer bull! His dam did a really nice job on this one as a first calf heifer. Big topped bull that's smooth shouldered and square made. Top 1% CED CEM, 5% YG CFAT, 10% SC, 25% BW DOC DMI.



lot 19

## 20 CIRS 01CM

AMGV1618962 | 2/1/2024 | 01CM  
Bull | Homo Polled | Black | PB 87.5%

BW
73
WW
812

KHR 79B [ KHR 01Z  
TMMW MR MONTANA 231E [ KHR 267Z  
TMMW MISS GRANITE 150Z [ JKGf 43U  
[ TMMW BLK BREEZE KRUGER  
DLW GOOD NIGHT 796Z [ CTR GOOD NIGHT 715T  
WOAK NIGHTSHADE [ DLW 796T1  
[ HYEK BLACK IMPACT 3960N  
WOAK DAISY MAE 08W [ RLBG ERICA J973

CE	BW	WW	YW	MK	TM	CEM	ST	YG	CW	REA	MB
17.4	-3	66	95	25	58	9	15	-0.17	26	0.56	0.15

A total outcross bull with really good calving ease EPD....top 5% in both CED and BW. Decent carcass EPDs to boot. I really like this calf - very clean in his sheath and front end. A bull that might be both a heifer and a cow bull. Really nice herdsire prospect. HOMO POLLED.

## 21 CIRS 2948M

AMGV1618969 | 2/3/2024 | 2948M  
Bull | Homo Polled | Black | PB 84.4%

BW
77
WW
608

GHGF YOUNG GUN C310 [ FMGF BLUE'S IMPACT 001X  
CIRS HALEN 717H [ GHGF CONTESSA 310T  
TSP 417B [ JOB DANELL RASCAL 25Z  
[ TSP PARIS 922P  
CIRS RIGHT TIME [ DCSF POST ROCK POWER BUILT 37B8  
CIRS G948L [ GGRR GILLY'S CPR DOLL 22Y  
CIRS HS48G [ CIRS DECADE 278U2  
[ RH DOMINETTE 14029

CE	BW	WW	YW	MK	TM	CEM	ST	YG	CW	REA	MB
13.1	-0.3	54	78	23	50	3	9.8	-0.32	15	0.68	0

If you like the bull we sold a couple years ago to the Gierhan family, you'll really like this HOMO POLLED son of HALEN!



## 22 CIRS 28CM

AMGV1618966 | 2/4/2024 | 28CM  
Bull | Homo Polled | Homo Black | PB 87.5%

BW
74
WW
802

KHR 79B [ KHR 01Z  
TMMW MR MONTANA 231E [ KHR 267Z  
TMMW MISS GRANITE 150Z [ JKGf 43U  
[ TMMW BLK BREEZE KRUGER  
DLW GOOD NIGHT 796Z [ CTR GOOD NIGHT 715T  
WOAK 28C [ DLW 796T1  
[ HYEK BLACK IMPACT 3960N  
WOAK DAISY MAE 08W [ RLBG ERICA J973

CE	BW	WW	YW	MK	TM	CEM	ST	YG	CW	REA	MB
16.2	-1.7	72	105	26	61	9	14	-0.14	26	0.49	0.19

Homo Black and Homo Polled! Purebred bull that's really clean made and long-bodied with plenty of power! Start up of only 74# and weaned at 802#. Could be a sleep all night calving ease bull yet still have the performance to make money. Top 3% CED CEM, 4% BW, 20% STAY, 25% FPI TM, 30% WW YW Milk.

## 23 CIRS HRRR H971M

AMGV1619189 | 2/5/2024 | H971M  
Bull | Polled | Red, white face | PC 50%

BW
90
WW
800

SLC FREEDOM 178F ET [ VAA LEACHMAN NEW DAY 205B  
EGL FOSTERS LO17 ET [ BB MISS 61Y  
EGL PHOEBE G374 [ EGL BULLSEYE C154 ET  
[ AKR 349A  
OLEEN 971 [ ]

CE	BW	WW	YW	MK	TM	CEM	ST	YG	CW	REA	MB
8	2.3	64	91	20	52	5	7	-0.24	18	0.48	-0.14

A big, stout Gelford bull that has some stretch and go to make someone a tone of money on their Angus based cows! He's long as a train and really powerful! If you're familiar with the Gelbvieh breed, you will know Fosters and the females that he has raised and how they produced. Top 2% FT, 10% YG, 15% DOC, 25% REA.

## 24 HERC 816M

AMGV1606877 | 2/5/2024 | 816M  
Bull | Homo Polled | Red | PB 87.5%

BW
75
WW
600

JRI TOP PRODUCER 282Z3 [ JRI POP A TOP 197T83  
DCSF POST ROCK POWER BUILT 37B8 [ JRI MS GRAND CANYON 282S2  
DCSF POST ROCK WILMA 298Z8 ET [ TAU MR KRUGERRAND 70M 130P  
[ DCSF POST ROCK WILMA 261P1 ET  
EGL FOSTERS LO17 ET [ SLC FREEDOM 178F ET  
CIRS 16F [ EGL PHOEBE G374  
LDJ MS GERANIUM T526 [ FHG FLYING H EXCLUSIVE 115N  
[ XZR E515

CE	BW	WW	YW	MK	TM	CEM	ST	YG	CW	REA	MB
8.3	-0.4	67	93	20	53	4	16.3	-0.37	21	0.69	-0.03

A member of our pen of 3 bulls! Long-bodied, big-topped, and really powerful! Lots of length and quality in this guy! Tons of cow power behind this guy with near perfect udders! Top 1% CFAT, 2% YG, 10% DOC.



**25 CIRS 9461M** BW 79  
WW 690

**AMGV1618677** | 2/6/2024 | 9461M  
Bull | Homo Polled | Red, white face | PC 72.7%

DCH HILLE G523 ET | FMH 2020 MR AT EASE 510C  
CIRS POWERCAT | DCH HILLE T801 THREE SPEEDET  
CIRS H56F | GHGF YOUNG GUN C310

GHGF YOUNG GUN C310 | FMGF BLUE'S IMPACT 001X  
CIRS 4611G | GHGF CONTESSA 310T  
CIRS 611B | CIRS DECADE 278U2  
B&D MISS ADVANCE 611

CE	BW	WW	YW	MK	TM	CEM	ST	YG	CW	REA	MB
14.2	0	58	86	31	60	5	13.8	-0.2	21	0.46	-0.08

A higher percentage Gelford bull out of a really nice Young Gun BWF cow and Powercat. Tons of pigment and quality in this guy! Homo Polled! His EPD's appear he could work on heifers.

**26 CIRS 30HM** BW 67  
WW 646

**AMGV1618967** | 2/6/2024 | 30HM  
Bull | Homo Polled | Homo Black | PB 90.6%

KHR 79B | KHR 01Z  
TMMW MR MONTANA 231E | KHR 267Z  
TMMW MISS GRANITE 150Z | JKGf 43U  
TMMW MR MONTANA 231E | TMMW BLK BREEZE KRUGER  
TMMW MR MONTANA 231E | KHR 79B  
WOKAK NIGHTINGALE | TMMW MISS GRANITE 150Z  
WOKAK NIGHTINGALE | WOKAK NIGHTHAWK 22C  
WOKAK NIGHTINGALE | WOKAK GOOD NIGHT LADY 19A

CE	BW	WW	YW	MK	TM	CEM	ST	YG	CW	REA	MB
18.5	-3.6	63	92	25	57	12	13.9	-0.2	24	0.51	0.17

Here's one of the total outcross herd sire prospects offered - and that's why we bought a majority of the White Oak Farms cows on their herd reduction sale. Moderate, smooth-jointed. EPDs indicate he'll be an easy calver too. Top 1 and 2% in CED and BW...hard to find and HOMO BLACK and HOMO POLLED!

**27 CIRS 460M** BW 81  
WW 638

**AMGV1607368** | 2/7/2024 | 460M  
Bull | Polled | Black | PB 87.5%

JMDS FREIGHTLINER | CRAN W10 ET  
BNC MR. HOJER D6268 | DCH HILLE T114 TACO  
BNC MISS HOJER Y0160 | S D S NEWSLINE 654S  
CIRS OVERDRIVE | BNC MISS HOJER T7126  
CIRS 60B1 | CIRS DECADE 278U2  
RAM 606J | DCSF POST ROCK MARY 154N1  
RAM 973C

CE	BW	WW	YW	MK	TM	CEM	ST	YG	CW	REA	MB
7.6	1.6	63	90	26	58	0	11.6	-0.21	33	0.65	0.17

Double black bull that is full of red meat, tons of shape, and true power in this guy! If you want pounds at weaning yet still have a really good replacement he's your guy! Tons of bone and shape in this herdsire. He could be a herd bull any where in the U.S.!



**28 CIRS 042M** BW 89  
WW 734

**AMGV1607376** | 2/8/2024 | O42M  
Bull | Polled | Black | PB 84.4%

DCSF POST ROCK POWER BUILT 37B8 | JRI TOP PRODUCER 282Z3  
CIRS 416G | DCSF POST ROCK WILMA 298Z8 ET  
CIRS 16B | CIRS DECADE 278U2  
LDJ MS GERANIUM T526

DCSF POST ROCK POWER BUILT 37B8 | JRI TOP PRODUCER 282Z3  
CIRS 42H | DCSF POST ROCK WILMA 298Z8 ET  
AHN SAFFRON | TLR COCOA 35C  
PMG XENA 05X

CE	BW	WW	YW	MK	TM	CEM	ST	YG	CW	REA	MB
9.3	2.3	76	120	19	57	5	13	-0.27	35	0.86	0.02

Extremely long-bodied bull with tons of shape and power! This guy will flat add pounds to his calf crop!



View Videos, Catalog and Supplement Sheet on

[www.circlesgelbvieh.com](http://www.circlesgelbvieh.com)

[www.dvauction.com](http://www.dvauction.com)



lot 29

**29** CIRS P876M

AMGV1607472 | 2/10/2024 | P876M  
Bull | Homo Polled | Red | PB 93.8%

BW
84
WW
580

JDPD ASTRO 407S  
CRLL JNCC EMPIRE 0983H ET  
HIGH MS EMMA 9E100 ET  
JRI PISTOL PETE 214A44  
JMR FORTUNE JMR 876F  
JMR CARINA JMR 567C

JDPD ROLEX 151M  
HAD PRINCESS OF ALOT 407P  
JRI POP A TOP 197T83  
CAEN MS BERRY CRUSH 9Y3 ET  
JRI POP A TOP 197T83  
JRI MS PEEK A BOO 214Y34  
JMR JMR 304 ANDREW  
JMR JMR 372 ACUTIE

CE	BW	WW	YW	MK	TM	CEM	ST	YG	CW	REA	MB
14.5	0	67	100	20	53	7	17.6	-0.27	12	0.54	-0.03

Wow, where to start on this stud! All cattlemen look this guy up and over! Complete outcross to anything our program has offered before! One of the most complete bulls from front to back that I believe we have sold! Tons of opportunity with this guy. He was our lead bull in our Pen of 3 in OKC! Herd Bull Alert!



lot 30

**30** CIRS 9302M

AMGV1618678 | 2/10/2024 | 9302M  
Bull | Homo Polled | Red, white face | PC 50%

BW
80
WW
694

KCF BENNETT STRATEGY Z303 ET  
TH MASTERPLAN 183F  
TH 512X 145Y DOMINETTE 57B  
CCRO CAROLINA EXCLUSIVE 1230Y  
SEPT EXCLUSIVE MARTINI G302 ET  
SEPT DIRTY MARTINI R792 ET

SCHU-LAR ON TARGET 22S  
KCF MISS REVOLUTION X338 ET  
FTF PROSPECTOR 145Y  
TH 122 711 DOMINETTE 512X ET  
DCSF POST ROCK SILVER 233U1  
CCRO MS C-CROSS EC / 7309T  
JCGR BAR GT MACH ONE 54L  
AHL HOTT DAMN 31L

CE	BW	WW	YW	MK	TM	CEM	ST	YG	CW	REA	MB
10.7	0.7	63	94	10	43	3	11.1	-0.2	3	0.42	0.13

A Homo Polled, true 50/50 Gelford! We decided to use a couple purebred Herefords on some cows, and man were we impressed! Tons of pigment and quality in this guy! More moderate-framed yet still packed full of meat! He should have smaller calves the way his shoulders and head are made.



lot 31

**31** CIRS 01FM

AMGV1618963 | 2/10/2024 | 01FM  
Bull | Homo Polled | Homo Black | PB 89.9%

BW
88
WW
876

KHR 79B  
TMMW MR MONTANA 231E  
TMMW MISS GRANITE 150Z  
RWG BUSTIN' STONES 4603  
WOAK MISS BLACKSTONE  
WOAK LILLY

KHR 01Z  
KHR 267Z  
JKGF 43U  
TMMW BLK BREEZE KRUGER  
BEAS BEAS 2806Z  
RWG DAISY XPREZZ 2401  
WOAK REVOLUTION 08T  
WOAK MISS MOLLIE

CE	BW	WW	YW	MK	TM	CEM	ST	YG	CW	REA	MB
12.7	0.9	75	110	29	66	9	15.6	-0.23	30	0.66	0.25

Homo Black, Homo Polled bull that has huge growth in this 846# weaning weight! Put him on your Angus based cows and watch the money come in! Top 5% MILK, 10% TM CEM, 20% SC, 30% WW, 35% MARB FPI



### 32 HRRR 540M

AMGV1618669 | 2/16/2024 | 540M  
Bull | Homo Polled | Red | PB 87.5%

BW
72
WW
642

JRI TOP PRODUCER 282Z3  
DCSF POST ROCK POWER BUILT 37B8  
DCSF POST ROCK WILMA 298Z8 ET  
TVG MINNESOTA DOUBLE  
CIRS 27YC  
GGRR GILLY'S GWEN 27Y

JRI POP A TOP 197T83  
JRI MS GRAND CANYON 282S2  
TAU MR KRUGERRAND 70M 130P  
DCSF POST ROCK WILMA 261P1 ET  
LNR MINNESOTA BELGRAD  
EOR 147K  
DCH HILLE W184 WASP  
GGRR GILLY'S BRADETTE R30

CE	BW	WW	YW	MK	TM	CEM	ST	YG	CW	REA	MB
12	-0.6	66	102	23	56	7	14.1	-0.2	28	0.58	0.07

Moderate-framed bull that is soft-made with plenty of power and look! One of the few Power built sons in the offering. Power built bulls flat work, and I see this one's future looking bright! Top 1% YG CFAT, 10% CREA CEM, 15% MK, 20% PG30 CW.



lot 32

### 33 CIRS 508M

AMGV1618650 | 2/18/2024 | 508M  
Bull | Homo Polled | Red | PB 87.5%

BW
84
WW
684

JRI TOP PRODUCER 282Z3  
DCSF POST ROCK POWER BUILT 37B8  
DCSF POST ROCK WILMA 298Z8 ET  
BEA PASSION 001X ET  
JTSD MS PASSION 508C  
JTSD MS 193W 236Z

JRI POP A TOP 197T83  
JRI MS GRAND CANYON 282S2  
TAU MR KRUGERRAND 70M 130P  
DCSF POST ROCK WILMA 261P1 ET  
RID R COLLATERAL 2R  
BEA ELLA ET  
DCSF POST ROCK ERA 193W2  
JTSD MS NITRO 827U

CE	BW	WW	YW	MK	TM	CEM	ST	YG	CW	REA	MB
10.3	1	75	110	16	53	4	14.5	-0.24	35	0.76	0.13

One of the few Powerbuilt sons in the offering! Soft-made bull with a big, square hip and plenty of rib shape to make great females that everyone wants! His dam has been raising good ones year after year!



lot 33

### 34 CIRS 7278M

AMGV1618658 | 2/19/2024 | 7278M  
Bull | Homo Polled | Double Black | PB 87.5%

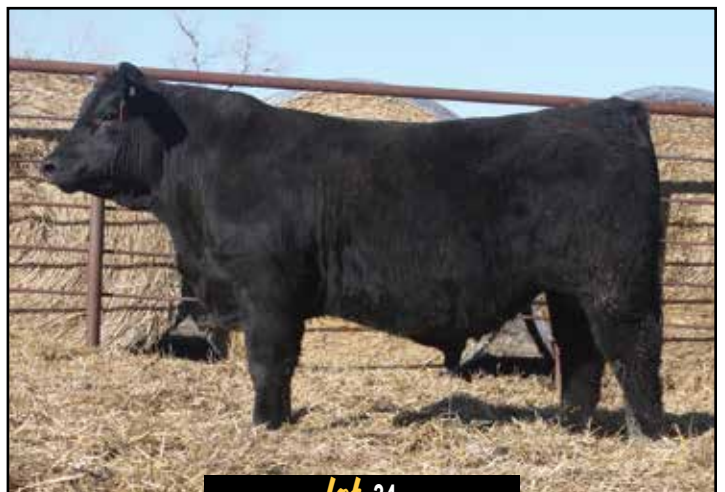
BW
77
WW
648

JMDS FREIGHTLINER  
BNC MR. HOJER D6268  
BNC MISS HOJER Y0160  
GHGF YOUNG GUN C310  
CIRS 278E  
CIRS 278R

CRAN W10 ET  
DCH HILLE T114 TACO  
S D S NEWSLINE 654S  
BNC MISS HOJER T7126  
FMGF BLUE'S IMPACT 001X  
GHGF CONTESSA 310T  
EGL FOSTERS LO17 ET  
EGL GAIL M278

CE	BW	WW	YW	MK	TM	CEM	ST	YG	CW	REA	MB
10.8	0	59	88	22	52	2	11.9	-0.23	31	0.64	0.13

A very attractive bull whose mom goes back to the great full sib to Decade! A smooth-shouldered bull that had a 77# start up. He will sire some of your top end replacement females! An outcross pedigree for what our black bulls usually have! He was in the pen as a potential show bull! Lots of quality in this guy. Homo Polled, Double Black! Top 1% CFAT, 15% CW, 20% YG.



lot 34



lot 36

**35 CIRS 831M**

**AMGV1618655** | 2/22/2024 | 831M  
**Bull** | Homo Polled | Black | *PB* 93.8%

<b>BW</b>	85
<b>WW</b>	706

FHG FLYING H GRAND SLAM 128D ET | FHG FLYING H MR TRACTION 45B  
 FHG FLYING H MR GRANDSLAM 124K | FHG FLYING H MS MHD 139Y  
 FHG FLYING H MS 355Z/45B 312D ET | FHG FLYING H MR TRACTION 45B  
 | FHG FLYING H MS IDEAL 355Z

DCSF POST ROCK POWER BUILT 37B8 | JRI TOP PRODUCER 282Z3  
 | DCSF POST ROCK WILMA 298Z8 ET

**CIRS 3PH**  
 CIRS 3LP | BDCG SHERMIT  
 | BDCG JOANIE 3L

CE	BW	WW	YW	MK	TM	CEM	ST	YG	CW	REA	MB
10.2	1	68	100	27	60	5	15.7	-0.27	31	0.78	0.05

A really long-made, powerful bull that's sure to add stretch and power into his calves! Out of a great Powerbuilt daughter that goes back to Sherman Tank and Polled Patriot. If anyone has paid attention to longevity and cow power and mothering ability, what Gebvieh is known for, you'll for sure find those in his pedigree! Longevity and go with a modern day look! Nice, square-made bull! Top 5% REA, 10% CW PG30, 15% MK.

**36 HERC 829M**

**AMGV1606875** | 2/23/2024 | 829M  
**Bull** | Homo Polled | Red | *PB* 99.9%

<b>BW</b>	89
<b>WW</b>	565

SLC FREEDOM 178F ET | VAA LEACHMAN NEW DAY 205B  
 EGL FOSTERS LO17 ET | BB MISS 61Y  
 EGL PHOEBE G374 | EGL BULLSEYE C154 ET  
 | AKR 349A

GHGF YOUNG GUN C310 | FMGF BLUE'S IMPACT 001X  
 | GHGF CONTESSA 310T

**CIRS 29F**  
 CIRS 29KT | EGL DELMONICO P063 ET  
 | CIRS JOY

CE	BW	WW	YW	MK	TM	CEM	ST	YG	CW	REA	MB
8.6	2.7	75	98	20	58	3	12.6	-0.47	18	0.89	-0.12

Another member of our pen of three bulls! Like the 816 bull (Lot 24), he offers a ton of length and power! He should sire some of the best feeding steers you have! Loads of growth and stretch in this guy. Top 1% YG CFAT, 2% DOC, 10% CREA.

**37 CIRS MASON 19**

**AMGV1619181** | 2/24/2024 | 19M  
**Bull** | Polled | Red | *PC* 43.8%

<b>BW</b>	78
<b>WW</b>	726

DCSF POST ROCK POWER BUILT 37B8 | JRI TOP PRODUCER 282Z3  
 | DCSF POST ROCK WILMA 298Z8 ET

**CIRS 416G**  
 CIRS 16B | CIRS DECADE 278U2  
 | LDJ MS GERANIUM T526

CE	BW	WW	YW	MK	TM	CEM	ST	YG	CW	REA	MB
12.5	0	75	118	21	58	6	9.4	-0.16	42	0.65	0.16

A Bob son that is long-made with lots of power. Out of a commercial Angus-based cow, you can't go wrong with this one. Lots of growth and stretch in this guy!

Combining a Continental breed full of milk & muscle with a British breed that exemplifies doability, mothering and longevity.  
**Result: the "Free lunch" of heterosis.**



*Gelford*™



### 38 CIRS 644M

AMGV1618653 | 3/2/2024 | 644M  
Bull | Homo Polled | Red | PB 89.1%

BW
79
WW
592

FMH 2020 MR AT EASE 510C [ BNC AT EASE A357  
TJB 105X MS VELVET  
DCH HILLE G523 ET [ DAR PURE POWER  
DCH HILLE T801 THREE SPEEDET [ DCH HILLE L232 LANA  
DCSF POST ROCK POWER BUILT 37B8 [ JRI TOP PRODUCER 282Z3  
DCSF POST ROCK WILMA 298Z8 ET  
CIRS DAISY [ EGL FOSTERS LO17 ET  
JRI MS NEW RELEASE 285J65  
CIRS POINSETTIA

CE	BW	WW	YW	MK	TM	CEM	ST	YG	CW	REA	MB
13.1	-0.4	53	77	28	54	6	14.2	-0.24	24	0.71	0.11

Really nice, deep-made, dark red bull that's out of a female we showed all over (Daisy). High, high quality bull that's hard to find a hole in! Only a 79# start up!



lot 38

### 39 CIRS 445M

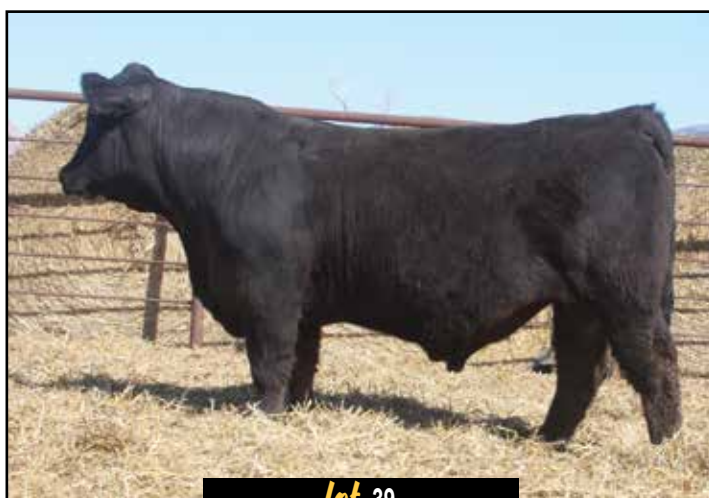
AMGV1618648 | 3/4/2024 | 445M  
Bull | Homo Polled | Black | PB 99.9%

BW
80
WW
674

FHG FLYING H GRAND SLAM 128D ET [ FHG FLYING H MR TRACTION 45B  
FHG FLYING H MS MHD 139Y  
FHG FLYING H MR GRANDSLAM 124K [ FHG FLYING H MR TRACTION 45B  
FHG FLYING H MS 355Z/45B 312D ET [ FHG FLYING H MS IDEAL 355Z  
EGL FOSTERS LO17 ET [ SLC FREEDOM 178F ET  
EGL PHOEBE G374  
CIRS 45B ET [ HHF W21 POLLED PATRIOT  
HHF MS SUMMIT Y35 ET  
HHF TREVOR C17

CE	BW	WW	YW	MK	TM	CEM	ST	YG	CW	REA	MB
9.4	1.1	70	94	18	53	4	13.1	-0.24	35	0.7	-0.05

A really long-spined bull that has a nice top and plenty of power! This guy's Dam is really good! Fosters, Phoebe, Polled Patriot, and Trevor; this pedigree screams cow power deluxe! Look him up!



lot 39

### 40 CIRS CPSX 1874M

AMGV1618957 | 3/4/2024 | 1874M  
Bull | Homo Polled | Black | PB 87.5%

BW
81
WW
562

FMGF BLUE'S IMPACT 001X [ HYEK BLACK IMPACT 3960N  
FMGF ONCE IN A BLUE MOON ET  
GHGF YOUNG GUN C310 [ GHGF MATE 47P  
JBOB 3103K ET  
GHGF CONTESSA 310T  
CIRS H7C [ CIRS DECADE 278U2  
JA L1 DOMINETTE 9707W  
CIRS 874J [ GHGF YOUNG GUN C310  
CIRS 74SH [ CIRS 74S

CE	BW	WW	YW	MK	TM	CEM	ST	YG	CW	REA	MB
12.1	1.1	60	85	28	58	0	10.4	-0.32	21	0.66	0

One of our Grandson's own bulls. Proud of him and his addition to the sale this year. Here's a Young Gun son out of a heifer he bought a couple years ago. Moderate and big-middled. Should definitely compliment British-based cowherds. HOMO POLLED!

### 41 CIRS 01KM

AMGV1618964 | 3/5/2024 | 01KM  
Bull | Homo Polled | Homo Black | PB 99.9%

BW
83
WW
660

DCH HILLE D453 [ DCH HILLE Y109  
DCH HILLE B110  
GLM HASHTAG# H11 [ SPUR KINGS RANSOME 901J ET  
GLM W55 [ GLM R6  
MJBC FRANCHISE F806 [ WWG C28  
ABCS 026C  
WOAK FRANCESCA [ TMMW MR MONTANA 231E  
WOAK MONTANAS DELILA [ WOAK DELILA 10A

CE	BW	WW	YW	MK	TM	CEM	ST	YG	CW	REA	MB
14	-0.1	74	110	27	64	7	15	-0.28	34	0.84	0.17

Can't get much better than this guy if you are in the money game. Use him about any way to maximize heterosis, and he's an outcross to about everything out there. HOMO POLLED and HOMO BLACK with balanced EPDs to boot.



lot 42

**42 CIRS 656M**

AMGV1618654 | 3/9/2024 | 656M  
Bull | Homo Polled | Red | PB 99.9%

BW
83
WW
630

EGL FOSTERS LO17 ET  
CIRS DECADE 278U2  
EGL GAIL M278  
SLMG TRACTION 1C  
CIRS 56AYD  
CIRS CIRS 56AY ET

SLC FREEDOM 178F ET  
EGL PHOEBE G374  
EGL GUIDO K051 ET  
EGL H802  
RWG TRACTION 7412  
CJY CLAYJOHNS Z615N  
RAM 460H RAMBO  
DMF 622B

CE	BW	WW	YW	MK	TM	CEM	ST	YG	CW	REA	MB
11.2	0.9	66	87	21	54	4	12.7	-0.31	19	0.61	0

A dark red, Decade son that is moderate-made and full of power! Tons of great old school bulls and donor cows in his pedigree - Decade, Fosters, Guido, Cocoa, Traction, Polled Patriot! If you want longevity in your replacements, yet still have the true Gelbvieh maternal strengths they are known for, this is your guy!



lot 43

**43 CIRS C9M ET**

AMGV1619428 | 3/12/2024 | C9M  
Bull | Polled | Red, white face | PC 50%

BW
82
WW
648

LOEWEN GENESIS G16  
KSU LAND GRANT 153 ET  
KSU MISS MISTY 956 ET  
DCH HILLE W184 WASP  
GGRR GILLY'S CPR DOLL 22Y  
GGRR GILLY'S KARA 709T

NJW 79Z Z311 ENDURE 173D ET  
ANIMALLOEWEN 77 48 MISS 344N 4RB42ET  
R LEADER 6964  
KJ 274S ROXY 482Y ET  
DCH HILLE M118 MAJESTY  
DCH HILLE M121 MACARONI  
GGRR GILLY'S WINNER R26

CE	BW	WW	YW	MK	TM	CEM	ST	YG	CW	REA	MB
10.5	2.6	75	110	22	63	5	11.7	-0.24	16	0.61	-0.2

Homo Polled by birth! Double goggle eye, and a true 50/50 Gelford! Flushmate of Lot 47. Tons of length of spine in these two bulls! Nice big, square hips packed full of red meat! Keep these two flush mates together, and watch them make money! Out of the great 22Y donor that has a book of producing great ones for us and the popular KSU Land Grant bull! Big time potential in these two powerhouses!

**44 CIRS 326FM**

AMGV1618664 | 3/14/2024 | 326FM  
Bull | Homo Polled | Red | PB 89.1%

BW
89
WW
654

FMH 2020 MR AT EASE 510C  
DCH HILLE G523 ET  
DCH HILLE T801 THREE SPEEDET  
DCSF POST ROCK POWER BUILT 37B8  
CIRS 326F  
CIRS AL26 ET

BNC AT EASE A357  
TJB 105X MS VELVET  
DAR PURE POWER  
DCH HILLE L232 LANA  
JRI TOP PRODUCER 282Z3  
DCSF POST ROCK WILMA 298Z8 ET  
CIRS DECADE 278U2  
BDCG FINE LADY 643K

CE	BW	WW	YW	MK	TM	CEM	ST	YG	CW	REA	MB
11.6	1.8	69	103	28	63	5	14.6	-0.27	31	0.85	0.13

A really deep-made bull that's plenty powerful out of a really good designed cow with a very nice udder! He should sire some great replacement females you neighbors will stop and stare at! Lots of true dimension in this bull that is big-boned and ready to make you money!

**45 CIRS C5M ET**

AMGV1620425 | 3/14/2024 | C5M  
Bull | Polled | Red | PB 93.8%

BW
88
WW
626

EGL FOSTERS LO17 ET  
CIRS DECADE 278U2  
EGL GAIL M278  
DCSF POST ROCK POWER BUILT 37B8  
CIRS 22YE  
GGRR GILLY'S CPR DOLL 22Y

SLC FREEDOM 178F ET  
EGL PHOEBE G374  
EGL GUIDO K051 ET  
EGL H802  
JRI TOP PRODUCER 282Z3  
DCSF POST ROCK WILMA 298Z8 ET  
DCH HILLE W184 WASP  
GGRR GILLY'S KARA 709T

CE	BW	WW	YW	MK	TM	CEM	ST	YG	CW	REA	MB
10.7	1.4	79	113	24	63	4	13	-0.3	32	0.85	0

Decade son!! Tons of true red meat and power in this guy! Decade by our 22YE donor (Right Time's full sister). We flushed her this way to make bulls that would flat perform and here's proof of it. Homo Polled by birth.



**46 CIRS 585M ET** **BW**  
91  
**WW**  
746

**AMGV1618652** | 3/15/2024 | 585M  
**Bull** | Polled | Black, white face | *PC* 40.4%

KCF BENNETT STRATEGY Z303 ET [ SCHU-LAR ON TARGET 22S  
 TH MASTERPLAN 183F [ KCF MISS REVOLUTION X338 ET

TH 512X 145Y DOMINETTE 57B [ FTF PROSPECTOR 145Y  
 [ TH 122 71I DOMINETTE 512X ET

HYEK BLACK IMPACT 3960N [ HYEK BLACK IMPULSE 1296L  
**EPGG EPGG MS PRAIRIE ZIPPER** [ HYEK BLACK RUBY 9604J

EPGG MS PRAIRIE UNIQUE [ ABF 529P  
 [ CPGG MS PRAIRIE RUBY RED

CE	BW	WW	YW	MK	TM	CEM	ST	YG	CW	REA	MB
12.5	2.4	75	110	15	53	4	12.9	-0.15	17	0.56	0.07

This Homo Polled black Gelford is flat good! Tons of length, shape, and power! He is so powerfull yet easy to look at! True herd bull alert here to take your ranch to the next level! This guy is a stud!



lot 46

**47 CIRS 8144M ET** **BW**  
88  
**WW**  
716

**AMGV1619429** | 3/25/2024 | 8144M  
**Bull** | Polled | Red, white face | *PC* 50%

LOEWEN GENESIS G16 [ NJW 79Z Z311 ENDURE 173D ET  
**KSU LAND GRANT 153 ET** [ ANIMALLOEWEN 77 48 MISS 344N  
 4RB42ET

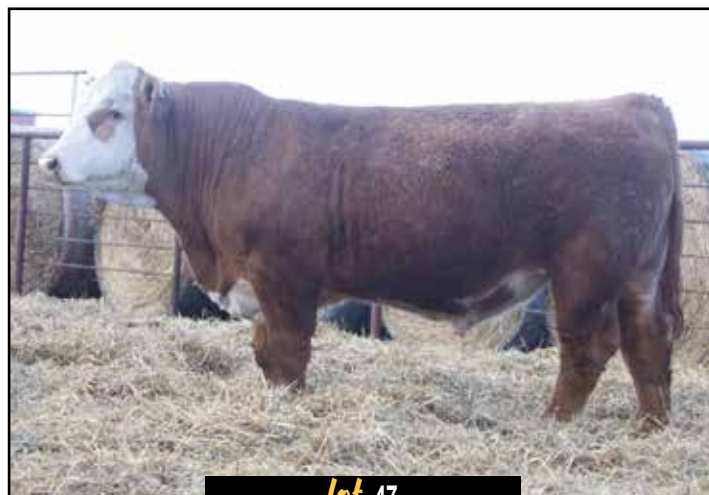
KSU MISS MISTY 956 ET [ R LEADER 6964  
 [ KJ 274S ROXY 482Y ET

DCH HILLE W184 WASP [ DCH HILLE M118 MAJESTY  
**GGRR GILLY'S CPR DOLL 22Y** [ DCH HILLE M121 MACARONI

GGRR GILLY'S KARA 709T [ GGRR GILLY'S WINNER R26

CE	BW	WW	YW	MK	TM	CEM	ST	YG	CW	REA	MB
10.5	2.6	75	110	22	63	5	11.7	-0.24	16	0.61	-0.2

Homo Polled by birth! Double goggle eye, and a true 50/50 Gelford! Flushmate of Lot 43. Tons of length of spine in these two bulls! Nice big square hips packed full of red meat! Keep these two flush mates together and watch them make money! Out of the great 22Y donor that has a book of producing great ones for us and the popular KSU Land Grant bull! Big time potential in these two power houses!



lot 47

**48 CIRS 0101M** **BW**  
84  
**WW**  
584

**AMGV1618660** | 3/17/2024 | 0101M  
**Bull** | Homo Polled | Black, white face | *PC* 70.3%

FMH 2020 MR AT EASE 510C [ BNC AT EASE A357  
**DCH HILLE G523 ET** [ TJB 105X MS VELVET

DCH HILLE T801 THREE SPEEDET [ DAR PURE POWER  
 [ DCH HILLE L232 LANA

GHGF YOUNG GUN C310 [ FMGF BLUE'S IMPACT 001X  
**HRRR H101H** [ GHGF CONTESSA 310T

CTR L1 DOMINETTE 3600A [ JA L1 DOMINO 1602Y  
 [ CL 1 DOMINO 988W

CE	BW	WW	YW	MK	TM	CEM	ST	YG	CW	REA	MB
12.3	1.3	58	87	30	60	4	13.3	-0.23	22	0.62	0.07

Double goggle-eyed 3/4 bull that has plenty of power. He goes back to 101 who was a really great Hereford! Homo Polled BWF Gelford.



lot 48



lot 49

**49** **RTB BROOKS HLEN**

**AMGV1619113** | 3/17/2024 | 431M

**Bull** | Homo Polled | Homo Black | BA 75%

BW	85
WW	670

GHGF YOUNG GUN C310 [ FMGF BLUE'S IMPACT 001X  
 GHGF CONTESSA 310T

**CIRS HALEN 717H**  
 TSP 417B [ JOB DANELL RASCAL 25Z  
 TSP PARIS 922P

SA V 004 PREDOMINANT 4438 [ SA V 8180 TRAVELER 004  
 SA V EMBLYNETTE 1182

**TABB 3156A ET**  
 CIRS 15S [ EGL FOSTERS LO17 ET  
 BTP MISS INFINITY

CE	BW	WW	YW	MK	TM	CEM	ST	YG	CW	REA	MB
11.9	0.2	65	96	24	56	4	11.7	-0.23	23	0.6	0.14

Here is a square-made, really good bull. Homo Black Homo Polled bull that is sure to do great things in any herd! Lots of cow power here as well! Out of the highly sought after Halen and 15S donor cow! Top 10% YG CFAT.

**50** **CIRS 947M ET**

**AMGV1618657** | 3/19/2024 | 947M

**Bull** | Homo Polled | Red | PB 87.5%

BW	89
WW	700

JRI TOP PRODUCER 282Z3 [ JRI POP A TOP 197T83  
 DCSF POST ROCK POWER BUILT 37B8 [ JRI MS GRAND CANYON 282S2

DCSF POST ROCK WILMA 298Z8 ET [ TAU MR KRUGERRAND 70M 130P  
 DCSF POST ROCK WILMA 261P1 ET

DCH HILLE W184 WASP [ DCH HILLE M118 MAJESTY  
 GRRR GILLY'S CPR DOLL 22Y [ DCH HILLE M121 MACARONI

GRRR GILLY'S KARA 709T [ GRRR GILLY'S WINNER R26  
 GRRR GILLY'S P87

CE	BW	WW	YW	MK	TM	CEM	ST	YG	CW	REA	MB
11	0.8	75	116	25	62	6	13.7	-0.28	32	0.85	-0.06

Power Built fans beware! Here's a full brother to Right Time, Profit Time and many others. This has been a no miss mating. Even though this guy had a rough go mid-summer, he's catching up to his contemporaries. HOMO POLLED - watch for his calves to be FLAT GOOD!!!

**51** **CIRS P569M**

**AMGV1618671** | 3/22/2024 | P569M

**Bull** | Homo Polled | Red | PC 78.1%

BW	79
WW	548

JRI TRADE SECRET 253G486 [ JRI GENERAL PATTON 213B97 ET  
 DDGR LOBO 5J [ JRI MS SECRET BLEND 253E386 ET

DDGR 124G [ VRT LAZY TV NOTCH A781  
 DDGR LILY 45U

JMR JMR 201Z [ KHR LOUIE KHR 09W  
 JMR CONSTANCE JMR 569C [ JMR WILLA 905W

JMR WANDA JMR 903W [ KHR 84T  
 LADY BIRD

CE	BW	WW	YW	MK	TM	CEM	ST	YG	CW	REA	MB
12.6	-0.1	55	82	14	41	5	18.2	-0.23	20	0.45	0.11

Soft made bull that is sure to sire some awesome replacement females! If you're in the market for a bull to have awesome females - look him up!



lot 52

**52** **CIRS P653M**

**AMGV1618672** | 3/22/2024 | P653M

**Bull** | Homo Polled | Red | PB 90.6%

BW	87
WW	626

JRI TRADE SECRET 253G486 [ JRI GENERAL PATTON 213B97 ET  
 DDGR LOBO 5J [ JRI MS SECRET BLEND 253E386 ET

DDGR 124G [ VRT LAZY TV NOTCH A781  
 DDGR LILY 45U

RHRT INDEPENDENCE L19 [ KCF BENNETT J25  
 JMR DARLA JMR 653D [ TOP MIS RED JET E270H7

JMR BERNICE JMR 442B [ JRI PLD FREE AGENT 125J3  
 KHRK YASMIN KHRK 102Y

CE	BW	WW	YW	MK	TM	CEM	ST	YG	CW	REA	MB
10.5	1.8	68	103	20	54	5	16.1	-0.17	26	0.46	0.13

A really deep-sided, long-bodied bull that has a bright future to raise some top replacement females! Very good feet and legs on this bull! Really attractive from the side! His dam is a bigger-framed powerhouse cow that has alot of dimension and power! Top 2% DOC, 15% HP, 20% STAY.



### 53 CIRS C124M

AMGV1616761 | 3/23/2024 | C124M  
 Bull | Homo Polled | Black | PB 99.9%

BW
88
WW
712

SKF DUNN'S DESTINATION 029E [ TMMW DESTINATION 82Y  
 DBRG MR DESTINATION 931G [ SKF DUNN'S MISS JACKPOT 473B  
 DBRG MISS TWISTER 706E [ DBRG TWISTER 451B  
 [ DBRG MS WATCHMAN 5402C  
 DCH HILLE U145 UPPERCUT [ DCHD GOLDEN BUCKLE GELV 030P  
 DCH HILLE C124 [ DCH HILLE N197 NURTURE  
 [ PLA BIG DOG 101Y  
 DCH HILLE A102 [ DCH HILLE W108 WEE

CE	BW	WW	YW	MK	TM	CEM	ST	YG	CW	REA	MB
11.8	1.1	82	128	28	69	6	16.4	-0.14	40	0.51	0.14

Complete outcross bull that is long-made with plenty of go in him! Tons of growth and carcass in this guy! He will sire some top-end feeder calves anywhere he goes! Top 5% CW, 10% EPI DOC YW MILK TM, 15% WW ADG.



lot 53

### 54 CIRS D587M

AMGV1616762 | 3/25/2024 | D587M  
 Bull | Homo Polled | Black | PB 99.9%

BW
86
WW
737

DCHD ARIAT 127A [ DCH HILLE Y342  
 DCH HILLE C169 [ DCHD BAILEY'S GIRL 127W  
 DCH HILLE A105 [ DCH HILLE W287 WOW  
 [ DCH HILLE Y270  
 LWHF UPGRADE 425X [ DCSF POST ROCK GRANITE 200P2  
 DCH HILLE D587 [ KCF MISS M211 R368  
 DCH HILLE Y276 [ KHR 43T  
 [ DCH HILLE T104 TONIC

CE	BW	WW	YW	MK	TM	CEM	ST	YG	CW	REA	MB
12	0.8	83	132	26	67	9	16	-0.21	45	0.81	0.15

Top black herd bull candidate! Really good purebred here. As a complete outcross to our program he will work extremely well with the power our females carry. Long made, bigged boned, and big centered! Top 4% YW, 10% CEM TM WW CW, 20% REA, 25% MK FPI.

### 55 CIRS 9444M

AMGV1618659 | 3/26/2024 | 9444M  
 Bull | Homo Polled | Black | PC 68.8%

BW
76
WW
618

DCSF POST ROCK POWER BUILT 37B8 [ JRI TOP PRODUCER 282Z3  
 CIRS RIGHT TIME [ DCSF POST ROCK WILMA 298Z8 ET  
 GGRR GILLY'S CPR DOLL 22Y [ DCH HILLE W184 WASP  
 [ GGRR GILLY'S KARA 709T  
 JKGF C373 CIMARRON [ DLW NEW FRONTIER 33A ET  
 OZZ 29H [ KCF MISS FORTUNE U490  
 WGN PAY IT FORWARD 44B [ ]

CE	BW	WW	YW	MK	TM	CEM	ST	YG	CW	REA	MB
12.1	0.2	73	116	25	61	6	15.4	-0.26	32	0.77	0.21

A black Right Time son that is also HOMO POLLED. Lots of good cows in his pedigree. He's young, but will prove to be a good investment in the future.

### 56 CIRS HRRR H944M

AMGV1619187 | 3/26/2024 | H944M  
 Bull | Polled | Red, white face | PC 45.3125%

BW
89
WW
620

OGSG OVERTIME 175D [ GGGE 3G ZIP LINE 266Z  
 MGA OVERTIME 926G [ OGSG OGSG YOKO 175Y  
 MGA LEE 612D [ LRMC M81 U25  
 [ MGA LEE 205Z  
 OLEEN 944 [ ]  
 [ ]

CE	BW	WW	YW	MK	TM	CEM	ST	YG	CW	REA	MB
12.8	-1.1	53	72	22	48	6	9.9	-0.2	16	0.45	0.05

A double-goggled, smooth, polled Gelford with a big middle! His mother is a purebred Horned Hereford, just didn't get her registration papers transferred to us. Very good cow! Look this guy up - great disposition as well!

*"An update on the bulls I bought. The two yearling bulls I got covered 64 cows on dry grass all summer at Burrton and only one cow was open and one was late bred. Hit everything else in a 40-day window! Super pleased, excited to see the calves this spring!"*

*-Seth Bartel - Durham Kansas*



lot 57

**57** CIRS C131M

AMGV1616763 | 3/28/2024 | C131M

Bull | Homo Polled | Red | PB 99.9%

DCHD ARIAT 127A

DCH HILLE C169

DCH HILLE A105

LWHF UPGRADE 425X

DCH HILLE C131

DCH HILLE A182

DCH HILLE Y342

DCHD BAILEY'S GIRL 127W

DCH HILLE W287 WOW

DCH HILLE Y270

DCSF POST ROCK GRANITE 200P2

KCF MISS M211 R368

DCH HILLE Y165

DCH HILLE R113 RHAPSODY

CE	BW	WW	YW	MK	TM	CEM	ST	YG	CW	REA	MB
11.7	1.5	78	124	26	64	9	17.5	-0.34	43	1.03	0.13

Here's another outcross bull to our program. Really long-made bull that has tons of power and substance! He's sure to sire some great feeding calves! Top 10% ST REA CW, 20% CEM FT, 25% MK \$COW.

BW	87
WW	639



lot 58

**58** CIRS 502M

AMGV1618649 | 3/29/2024 | 502M

Bull | Polled | Black | PC 40.625%

JRI TRADE SECRET 253G486

DDGR LOBO 5J

DDGR 124G

502

JRI GENERAL PATTON 213B97 ET

JRI MS SECRET BLEND 253E386 ET

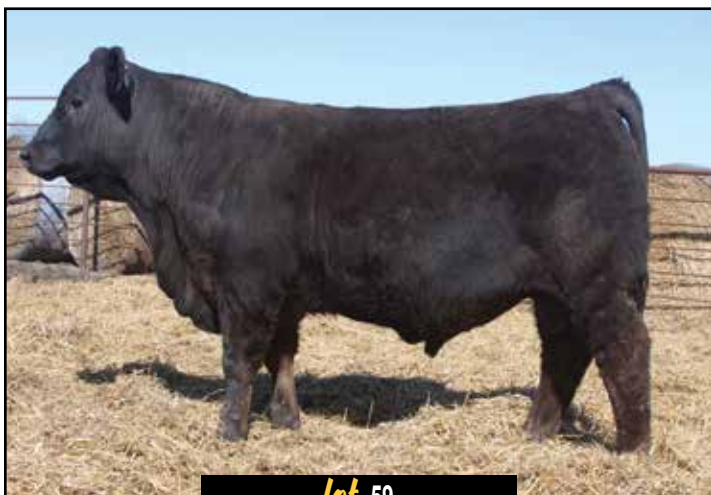
VRT LAZY TV NOTCH A781

DDGR LILY 45U

CE	BW	WW	YW	MK	TM	CEM	ST	YG	CW	REA	MB
11	0.7	65	95	18	51	5	10.4	-0.06	37	0.34	0.26

This guy is really impressive when you study him from the side! Really good front 1/3 yet plenty of rib shape and adequate amount of power! He reads that he should sire some front pasture females!

BW	82
WW	634



lot 59

**59** CIRS G621M

AMGV1620855 | 3/30/2024 | G621M

Bull | Homo Polled | Black | PB 99.9%

SKF DUNN'S DESTINATION 029E

DBRG MR DESTINATION 931G

DBRG MISS TWISTER 706E

PHG EMINENCE E02

DCH HILLE G621

DCH HILLE C234

TMMW DESTINATION 82Y

SKF DUNN'S MISS JACKPOT 473B

DBRG TWISTER 451B

DBRG MS WATCHMAN 5402C

BABR DOMINANCE 4280B

DDN BELLY RIVER AMBER 56A

FRL FIR RIVER XAMPLE 29X

DCH HILLE L112 LAVISH

CE	BW	WW	YW	MK	TM	CEM	ST	YG	CW	REA	MB
11.5	-0.3	70	109	22	57	7	17.3	-0.02	28	0.08	0.21

Big growth bull that is square-made with plenty of stretch! He should sire some great steers that will top the sales in any part of the world! Top 10% YW, 15% WW, 20% TM PG30 STAY, 25% DOC.

BW	93
WW	706



## 60 CIRS HRRR H9198M

AMGV1619188 | 3/31/2024 | H9198M

Bull | Polled | Black, white face | PC 50%

BW
80
WW
630

FMGF BLUE'S IMPACT 001X  
 GHGF YOUNG GUN C310  
 GHGF CONTESSA 310T

[ HYEK BLACK IMPACT 3960N  
 FMGF ONCE IN A BLUE MOON ET  
 GHGF MATE 47P  
 JBOB 3103K ET

[  
 ]

OLEEN 9198

CE	BW	WW	YW	MK	TM	CEM	ST	YG	CW	REA	MB
12.6	-0.6	43	65	28	50	3	7.6	-0.22	9	0.38	0.03

Here's a black Gelford tha is moderate-made with plenty of power and bone! Good pigment on this guy that is smooth shouldered! He's made like he'd be an easy calver and could work on heifers with his birth weight!



lot 60



lot 62

## 61 CIRS 22EM

AMGV1618663 | 4/1/2024 | 22EM

Bull | Homo Polled | Red | PB 89.1%

BW
81
WW
598

FMH 2020 MR AT EASE 510C  
 DCH HILLE G523 ET  
 DCH HILLE T801 THREE SPEEDET

[ BNC AT EASE A357  
 TJB 105X MS VELVET  
 DAR PURE POWER  
 DCH HILLE L232 LANA

DCSF POST ROCK POWER BUILT 37B8  
 CIRS 22YE  
 GGRR GILLY'S CPR DOLL 22Y

[ JRI TOP PRODUCER 282Z3  
 DCSF POST ROCK WILMA 298Z8 ET  
 DCH HILLE W184 WASP  
 GGRR GILLY'S KARA 709T

CE	BW	WW	YW	MK	TM	CEM	ST	YG	CW	REA	MB
12.5	1.1	70	110	31	66	7	15.8	-0.21	40	0.85	0.15

Here's a guy that is a little younger but pedigree screams buy of the day! Out of one of our doners that gos back to 22Y and the G523 bull that has generated more good ones for us than alot of bulls! Put this guy on your commercial cows and sit back and just collect your best weighing cows! Top 1% MK, 4% REA, 5% YG, 10% TM, 20% CEM ST, 25% DOC, 30% CED MB \$COW.

## 62 CIRS C13M

AMGV1618666 | 4/3/2024 | C13M

Bull | Polled | Red, white face | PC 43.8%

BW
75
WW
604

DCSF POST ROCK POWER BUILT 37B8  
 CIRS 44F  
 CIRS POINSETTIA  
 C13

[ JRI TOP PRODUCER 282Z3  
 DCSF POST ROCK WILMA 298Z8 ET  
 EGL FOSTERS LO17 ET  
 JRI MS NEW RELEASE 285J65

[  
 ]

CE	BW	WW	YW	MK	TM	CEM	ST	YG	CW	REA	MB
11.6	-1.6	62	83	23	54	6	6.3	0.02	36	0.31	0.31

April Gelford with really good pigment! Lots of shape and dimension in this guy! If his daughters are as good as he is, you should be set for years to come!

## 63 CIRS HRRR 717M

AMGV1618675 | 4/4/2024 | 717M

Bull | Homo Polled | Red | PC 68.75%

BW
83
WW
712

JRI GENERAL PATTON 213B97 ET  
 BCFG BUTLERS GENERAL LEE J207 ET  
 BCFG BUTLERS MS CODE 207Z1

[ JRI POP A TOP 197T83  
 JRI MS EXTRAVAGANT 213T87  
 BCFG BUTLERS CODE RED 506T ET  
 BCFG BUTLERS MS PARKWAY 207N

GHGF YOUNG GUN C310  
 CIRS H17F  
 CO L1 DOMINETTE 217Z

[ FMGF BLUE'S IMPACT 001X  
 GHGF CONTESSA 310T  
 CL 1 DOMINO 955W  
 CO L1 DOMINETTE 226M

CE	BW	WW	YW	MK	TM	CEM	ST	YG	CW	REA	MB
13.5	-0.6	53	78	28	55	4	11.2	-0.27	18	0.62	0.06

One of the few General Lee bulls in the sale that is big-footed and boned with a nice, square hip! He's a solid Red Gelford out of a really good black Gelford female! He's sure to sire some great calves.



lot 64

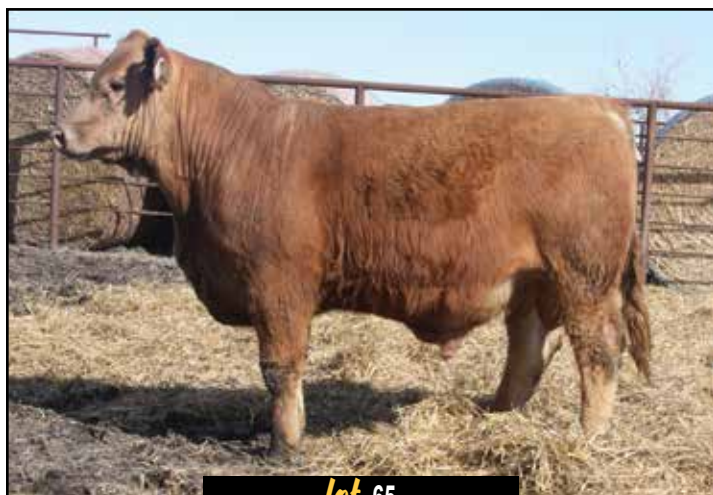
**64 CIRS 941M**

**AMGV1618656** | 4/8/2024 | 941M  
**Bull** | Homo Polled | Red | *PC* 70.3%

FMH 2020 MR AT EASE 510C	BNC AT EASE A357
<b>DCH HILLE G523 ET</b>	TJB 105X MS VELVET
DCH HILLE T801 THREE SPEEDET	DAR PURE POWER
	DCH HILLE L232 LANA
GHGF YOUNG GUN C310	FMGF BLUE'S IMPACT 001X
<b>CIRS H41G</b>	GHGF CONTESSA 310T
XP L1 DOMINETTE 12023	XP L1 DOMINO 06067
	XP L1 DOMINETTE 07013

CE	BW	WW	YW	MK	TM	CEM	ST	YG	CW	REA	MB
11.4	2.2	61	89	26	57	3	13.8	-0.21	25	0.65	0.12

A younger solid red Gelford out of one of our top herd sires! Lots of go in this guy! He's solid red out of a red bull and black-white-face Gelford! Buy him and sit back and watch him make money.



lot 65

**65 CIRS 915M**

**AMGV1618972** | 4/8/2024 | 915M  
**Bull** | Homo Polled | Red | *PC* 78.1%

JRI TRADE SECRET 253G486	JRI GENERAL PATTON 213B97 ET
<b>DDGR LOBO 5J</b>	JRI MS SECRET BLEND 253E386 ET
DDGR 124G	VRT LAZY TV NOTCH A781
	DDGR LILY 45U
DCSF POST ROCK POWER BUILT 37B8	JRI TOP PRODUCER 282Z3
<b>CIRS 15UG</b>	DCSF POST ROCK WILMA 298Z8 ET
RHRT MISS TREVOR BRASS U62 ET	DCSF POST ROCK TOP BRASS ET
	HHF TREVOR C17

CE	BW	WW	YW	MK	TM	CEM	ST	YG	CW	REA	MB
10	1.2	72	108	20	56	4	15	-0.23	25	0.56	0.08

He goes back in his pedigree to the great Trevor cow and Powerbuilt! This guy is sure to sire some front end donor cows and replacement heifers! Look this guy over -his front 1/3 is so attractive, yet he's still huge middled with so much power! If you're wanting to move your herd forward, this guy should be a top pick! An April bull with tons of growth!



lot 66

**66 CIRS P661M**

**AMGV1618673** | 4/11/2024 | P661M  
**Bull** | Homo Polled | Red | *PB* 95.3%

FMH 2020 MR AT EASE 510C	BNC AT EASE A357
<b>DCH HILLE G523 ET</b>	TJB 105X MS VELVET
DCH HILLE T801 THREE SPEEDET	DAR PURE POWER
	DCH HILLE L232 LANA
RID R COLLATERAL 2R	JCGR BAR GT FLASHBACK 410M ET
<b>JMR DENNY JMR 661D</b>	JCGR BAR GT LONI 27N ET
JMR JMR 384 AQUARIUS	JRI POP A TOP 197T83
	JMR YVETTE JMR 108Y

CE	BW	WW	YW	MK	TM	CEM	ST	YG	CW	REA	MB
14.5	-0.2	61	89	26	57	5	15	-0.23	32	0.7	0.17

A really soft-made, easy-doing bull that is moderate in his design out of a great uddered and designed female! Keep every female out of this guy! Lots of maternal in this guy!



# 67 CIRS 54M

**AMGV1613344** | 4/19/2024 | 54M  
**Bull** | Homo Polled | Black | BA 69.6%

<b>BW</b>
79
<b>WW</b>
804

JRI GENERAL PATTON 213B97 ET  
**BCFGBUTLERS GENERAL LEE J207 ET**  
 BCFG BUTLERS MS CODE 207Z1

JRI POP A TOP 197T83  
 JRI MS EXTRAVAGANT 213T87  
 BCFG BUTLERS CODE RED 506T ET  
 BCFG BUTLERS MS PARKWAY 207N

OZZ IDEAL LEGACY 56R  
**OZZ MILADY 4 C**  
 ISAACS CANDY 738

KCF BENNETT IDEAL G182  
 OZZ MISS DIANE 10K  
 COLEMAN TRAVELER 509  
 ISAACS CANDY 539

CE	BW	WW	YW	MK	TM	CEM	ST	YG	CW	REA	MB
12	-0.9	60	91	27	57	5	14	-0.1	33	0.51	0.33

We pulled this guy in late to go to OKC! He was green but stood a bunch of competition! Very attractive, smooth-made bull with a very bright future. Keep all the females out of him!



lot 67

# 68 CIRS 9110M

**AMGV1618676** | 4/20/2024 | 9110M  
**Bull** | Homo Polled | Black, white face | PC 43.75%

<b>BW</b>
80
<b>WW</b>
552

DCSF POST ROCK POWER BUILT 37B8  
**CIRS RIGHT TIME**  
 GGRR GILLY'S CPR DOLL 22Y

JRI TOP PRODUCER 282Z3  
 DCSF POST ROCK WILMA 298Z8 ET  
 DCH HILLE W184 WASP  
 GGRR GILLY'S KARA 709T

CIRS 9110

CE	BW	WW	YW	MK	TM	CEM	ST	YG	CW	REA	MB
12.5	-1	55	87	27	54	6	9.1	-0.2	20	0.47	0.11

Lots of pigment in this one! Moderate-made bull that is one of the youngest in the sale but has a lot of quality! Should sire some really good steers and replacements.

# 69 CIRS C2M

**AMGV1618667** | 4/21/2024 | C2M  
**Bull** | Homo Polled | Black, white face | PC 43.8%

<b>BW</b>
82
<b>WW</b>
546

DCSF POST ROCK POWER BUILT 37B8  
**CIRS 44F**  
 CIRS POINSETTIA

JRI TOP PRODUCER 282Z3  
 DCSF POST ROCK WILMA 298Z8 ET  
 EGL FOSTERS LO17 ET  
 JRI MS NEW RELEASE 285J65

C2

CE	BW	WW	YW	MK	TM	CEM	ST	YG	CW	REA	MB
10	0.4	62	86	20	51	5	6.3	-0.09	39	0.44	0.1

A HOMO POLLED black baldy. A nice moderate calf. Double goggle eyed; smooth shouldered. Built like an easy calver, with a startup weight of 82#, out of an outstanding commercial no-miss cow! Don't overlook him due to his age. . . Young, but darnn good!

# 70 CIRS CPSX 0678M

**AMGV1618661** | 4/25/2024 | 0678M  
**Bull** | Homo Polled | Red | PB 94.6%

<b>BW</b>
82
<b>WW</b>
636

DCH HILLE G523 ET  
**CIRS KORNERSTONE 22EK**  
 CIRS 22YE

FMH 2020 MR AT EASE 510C  
 DCH HILLE T801 THREE SPEEDET  
 DCSF POST ROCK POWER BUILT 37B8  
 GGRR GILLY'S CPR DOLL 22Y

CIRS RIGHT TIME  
**CIRS 678H**  
 CIRS 30PD ET

DCSF POST ROCK POWER BUILT 37B8  
 GGRR GILLY'S CPR DOLL 22Y  
 LWHF JKGF IMPACT Y353  
 CIRS 278R

CE	BW	WW	YW	MK	TM	CEM	ST	YG	CW	REA	MB
12.8	0.9	73	112	28	64	6	15.5	-0.31	31	0.91	0.08

Big topped bull with a ton of power and length of body! Out of a very good younger up and coming cow! Put him to work and watch his calves bust the scales at weaning time. Top 10% MK TM, 15% WW YW HP, 20% CED CEM.



"Where Workin' Cattle and Eye Appeal Come Full Circle"

**ATTENTION JUNIORS:** Purchase your 2025 show heifer at the 18th Annual Going to Grass Production Sale and receive a \$100 sale credit. Circle S will also award additional sale credits for the 2026 Going to Grass Production Sale if your purchased heifer is exhibited and awarded grand, reserve or division champion at the 2025 AGJA Grand Ol Gelbvieh Junior Classic, June 23-27, 2025 in Lebanon, TN.

Additional sale credits will be awarded to any junior that exhibits and is awarded grand champion at any of the AGA recognized Ring of Gold Point Shows in 2025. (Junior is required to forward photos and results of their efforts to [circle\\_s@hometelco.net](mailto:circle_s@hometelco.net) within 45 days of any qualifying event.)



**"We don't raise show cattle; we show cattle we raise" - these cattle will show well and hold their own. Most importantly, these girls will be productive cows at the end of the day!**



lot 71



lot 72

**71 CIRS 252M**

AMGV1619440 | 1/29/2024 | 252M  
Heifer | Polled | Red | PB 99.9%

BW  
67

DL JEN-TY DYNAMITE  
HDG HILLSDOWN FINNEGAN 4F  
HDG AVERY 13D  
CIRS RIGHT TIME  
CIRS 52J  
CIRS 837TC ET

FRL FIR RIVER RED CHILLI 451Y  
DL JEN-TY CINDY 273U  
JRI POP A TOP 197T83  
HDG BAYLEE 14B  
DCSF POST ROCK POWER BUILT 37B8  
GGRR GILLY'S CPR DOLL 22Y  
CRAN BUDDY BOY T729  
CIRS 2JT

CE	BW	WW	YW	MK	TM	CEM	ST	YG	CW	REA	MB
15.9	-1.3	68	102	26	60	7	13.8	-0.3	18	0.65	0.05

Wow, what a female to start the show heifers with! You want to talk about a true COW, that has a world of future, HERE SHE IS! Tons of power and capacity in her! She will do plenty of winning in her show career but more importantly will be one heck of a donor cow! Top 10% CED, 20% CFAT YG CEM, 15% SC 25% BW MILK HP.

**72 CIRS 714M**

AMGV1607372 | 2/15/2024 | 714M  
Heifer | Homo Polled | Red | PB 87.5%

BW  
0

JDPD ASTRO 407S  
CRLL JNCC EMPIRE 0983H ET  
HIGH MS EMMA 9E100 ET  
DCSF POST ROCK POWER BUILT 37B8  
CIRS 14E  
BMCE MAC LADY BECCA 359A

JDPD ROLEX 151M  
HAD PRINCESS OF ALOT 407P  
JRI POP A TOP 197T83  
CAEN MS BERRY CRUSH 9Y3 ET  
JRI TOP PRODUCER 282Z3  
DCSF POST ROCK WILMA 298Z8 ET  
RHRT INDEPENDENCE L19  
BMCE TM LADY BECCA 159Y

CE	BW	WW	YW	MK	TM	CEM	ST	YG	CW	REA	MB
13.3	-0.4	65	106	22	55	6	13.8	-0.12	19	0.17	-0.02

Here is a heifer we have shown numerous times and have done well with! Tons of dimension and cow power in this one! Out of Empire which is a former National Champion! She will do her fair share of winning and do even more in the donor pen!





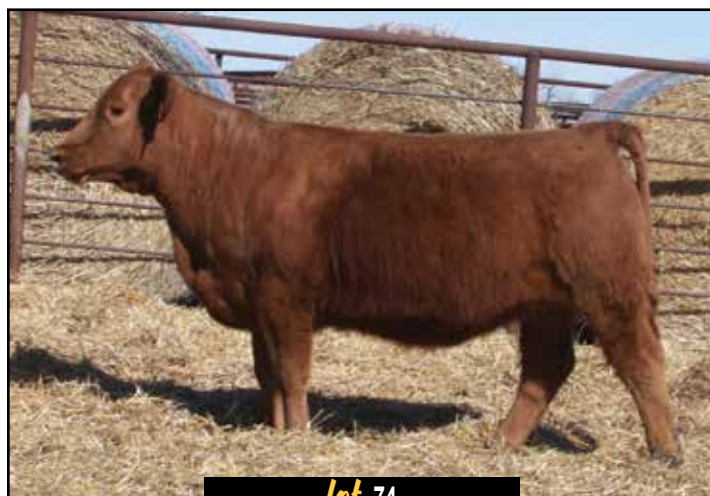
**lot 73**

**73 CIRS 081TM**  
**AMGV1619496** | 3/1/2024 | 081TM  
**Heifer** | Polled | Black | *PB* 99.9% **BW** 78

HDG HILLSDOWN FINNEGAN 4F [ DL JEN-TY DYNAMITE  
 LRSF CORVETTE J168 [ HDG AVERY 13D  
 LRSF SNAZZY C79 [ RUP RUPPLE YUKON 301P  
 [ LRSF SNAZZY Y26  
 PADO MR. IMPACT 6610D ET [ HYEK BLACK IMPACT 3960N  
 [ EGL P016 ET  
**CIRS 81TH** [ CIRS PROWLER ET  
 CIRS 81RT [ CIRS RUMER

CE	BW	WW	YW	MK	TM	CEM	ST	YG	CW	REA	MB
12.5	0.3	73	105	24	61	6	13	-0.19	35	0.63	0.07

A really good Corvette daughter out of a darn good Impact daughter! She should be competitive at any level, yet still make a tremendous donor cow!



**lot 74**

**74 CIRS 938M**  
**AMGV1606876** | 4/6/2024 | 938M  
**Heifer** | Polled | Red | *PC* 76.6% **BW** 70

DCSF POST ROCK POWER BUILT 37B8 [ JRI TOP PRODUCER 282Z3  
**CIRS RIGHT TIME** [ DCSF POST ROCK WILMA 298Z8 ET  
 GGRR GILLY'S CPR DOLL 22Y [ DCH HILLE W184 WASP  
 [ GGRR GILLY'S KARA 709T  
 TAU OUTRIGHT 162A [ CONNEALY CONSENSUS 7229  
**ELC MS. SARAH JANE 38G** [ TAU GUNNISON 5151R  
 ELC MISS NATTIE 18C [ DCH DCH HILLE X102  
 [ ELC ELC MS SANDMAN 1Z

CE	BW	WW	YW	MK	TM	CEM	ST	YG	CW	REA	MB
13.1	-0.4	68	109	22	56	6	14.9	-0.23	37	0.8	0.17

An April Right Time daughter that is really impressive in about every angle you look at her! Very powerful with a great look to go with it! Big time show heifer backed by a really good cow that I purchased from Coopers a few years ago! Top 10% CREA, 15% CFAT YG, 25% HP.



**lot 75**

**75 CIRS 672M**  
**AMGV1619445** | 4/17/2024 | 672M  
**Heifer** | Polled | Red | *PB* 93.8% **BW** 82

HDG HILLSDOWN FINNEGAN 4F [ DL JEN-TY DYNAMITE  
**LRSF CORVETTE J168** [ HDG AVERY 13D  
 LRSF SNAZZY C79 [ RUP RUPPLE YUKON 301P  
 [ LRSF SNAZZY Y26  
 DCSF POST ROCK POWER BUILT 37B8 [ JRI TOP PRODUCER 282Z3  
**CIRS 72WD** [ DCSF POST ROCK WILMA 298Z8 ET  
 CIRS 72NW [ CIRS RAMON  
 [ SEPT VELVET TOUCH N87 ET

CE	BW	WW	YW	MK	TM	CEM	ST	YG	CW	REA	MB
10.3	0.5	71	105	24	59	6	13.6	-0.21	34	0.68	0.09

Another April heifer that goes back to a show heifer Kaycie showed years ago! This one will be a lot of fun as a bred if she turns out anything like her mama. Tons of cow power in this one's pedigree!

From top to bottom, this set of heifers are the cream of the crop. There are show heifer prospects, donor cow prospects throughout. This set of heifers is what you can build a foundation on - solid cows that have stayability, performance and productivity!



What a way to start the pen heifers with this pen! Tons of quality and performance in these girls! All their dams are really good! Any one of these girls could be donors in no time at all! 76B could easily been a show heifer.



**Gelford™**

**THE GOAL OF THE GELFORD™ BREED** Registry services, namely, maintaining a registry of the Gelford cattle breed; providing functions in the nature of maintain transfer records of ownership of Gelford cattle; promoting public awareness in the field of the Gelford cattle breed.



**76A** **CIRS 937M**  
**AMGV1606878** | 2/13/2024 | 937M **BW**  
 Heifer | Polled | Black | *PB 86.7%* **0**

- GHGF YOUNG GUN C310 [ FMGF BLUE'S IMPACT 001X
- CIRS HALEN 717H** [ GHGF CONTESSA 310T
- TSP 417B [ JOB DANELL RASCAL 25Z
- [ TSP PARIS 922P
- BABR 5201C RELOAD ET [ BABR SECRET BRAND 2100Z ET
- SEPT G37 ET** [ BABR 5002R
- JCGR BAR GT MS HEPBURN 113TET [ RID R COLLATERAL 2R
- [ WRGA BAR GT DAWN

CE	BW	WW	YW	MK	TM	CEM	ST	YG	CW	REA	MB
11.2	0.2	58	83	26	55	3	8.1	-0.29	22	0.72	0.18

**76B** **CIRS 887M**  
**AMGV1619450** | 3/1/2024 | 887M **BW**  
 Heifer | Polled | Black | *PB 82.8%* **81**

- FMH 2020 MR AT EASE 510C [ BNC AT EASE A357
- DCH HILLE G523 ET** [ TJB 105X MS VELVET
- DCH HILLE T801 THREE SPEEDET [ DAR PURE POWER
- [ DCH HILLE L232 LANA
- GHGF YOUNG GUN C310 [ FMGF BLUE'S IMPACT 001X
- CIRS 87F** [ GHGF CONTESSA 310T
- DCSF 87R6 [ DCSF POST ROCK TOP BRASS ET
- [ HUS HUST 323 2X1 6013

CE	BW	WW	YW	MK	TM	CEM	ST	YG	CW	REA	MB
12.3	0.7	60	90	33	62	4	16.7	-0.22	22	0.56	0.17

**76C** **CIRS 601M**  
**AMGV1619444** | 3/5/2024 | 601M **BW**  
 Heifer | Polled | Black | *PB 94.6%* **82**

- DCH HILLE G523 ET [ FMH 2020 MR AT EASE 510C
- CIRS KORNERSTONE 22EK** [ DCH HILLE T801 THREE SPEEDET
- CIRS 22YE [ DCSF POST ROCK POWER BUILT 37B8
- [ GGRR GILLY'S CPR DOLL 22Y
- CIRS KING [ RAM 460H RAMBO
- CIRS 601H ET** [ BDCG DAWSON CREEK CARRIE
- HYEK MADENA 4960P [ HYEK BLACK IMPULSE 1296L
- [ HYEK BLACK RUBY 9604J

CE	BW	WW	YW	MK	TM	CEM	ST	YG	CW	REA	MB
11.6	2	70	100	28	63	4	14.2	-0.29	27	0.83	0.12





A group of really stout and attractive females. 77B and D are out of no miss cows that have left their mark in the herd! You can't go wrong with any of these females! Lots of longevity in these as well as pedigrees that are packed full of greatness!



Reserve Champion Pen of Three Heifers  
2025 Cattlemen's Congress • Oklahoma City, OK

**77A** CIRS P977M  
AMGV1619503 | 3/4/2024 | P977M **BW**  
Heifer | Polled | Red | PB 99.9% **77**

HDG HILLSDOWN FINNEGAN 4F [ DL JEN-TY DYNAMITE  
LRSF CORVETTE J168 [ HDG AVERY 13D  
LRSF SNAZZY C79 [ RUP RUPPLE YUKON 301P  
[ LRSF SNAZZY Y26  
JMR EIGER JMR 713E [ KHR 52C  
JMR GLORIA JMR 977G [ JMR CATHLEEN JMR 566C  
JMR CHARLENE JMR 560C [ KHR 25A  
[ JMR JMR 382 ANNA

CE	BW	WW	YW	MK	TM	CEM	ST	YG	CW	REA	MB
13.1	-0.5	65	94	20	52	8	15.7	-0.23	25	0.5	0.1

**77B** CIRS 72YM  
AMGV1619475 | 3/25/2024 | 72YM **BW**  
Heifer | Polled | Red | PB 93.8% **67**

JRI GENERAL PATTON 213B97 ET [ JRI POP A TOP 197T83  
BCFG BUTLERS GENERAL LEE J207 ET [ JRI MS EXTRAVAGANT 213T87  
BCFG BUTLERS MS CODE 207Z1 [ BCFG BUTLERS CODE RED 506T ET  
[ BCFG BUTLERS MS PARKWAY 207N  
JCGR BAR GT 527U ET [ JBOB 84Y 1411G  
CIRS 72NY [ EGL C110  
SEPT VELVET TOUCH N87 ET [ EGL GUIDO K051 ET  
[ GNG KELLY 14Z

CE	BW	WW	YW	MK	TM	CEM	ST	YG	CW	REA	MB
14	-1.3	53	81	23	50	5	12.1	-0.3	25	0.72	0.13

**77C** CIRS 0572M  
AMGV1619499 | 4/20/2024 | 0572M **BW**  
Heifer | Polled | Red | PB 95.3% **73**

FMH 2020 MR AT EASE 510C [ BNC AT EASE A357  
DCH HILLE G523 ET [ TJB 105X MS VELVET  
DCH HILLE T801 THREE SPEEDET [ DAR PURE POWER  
[ DCH HILLE L232 LANA  
TABB 515E BROOKS POWER BUILT [ DCSF POST ROCK POWER BUILT 37B8  
CIRS 572H [ TABB 515C  
CIRS 33NTC ET [ CIRS KING  
[ CIRS 72NW

CE	BW	WW	YW	MK	TM	CEM	ST	YG	CW	REA	MB
11.7	0.7	59	86	27	57	6	15.2	-0.27	32	0.81	0.12

**77D** CIRS 315M  
AMGV1619441 | 5/15/2024 | 315M **BW**  
Heifer | Polled | Red | PB 90.6% **71**

JRI TRADE SECRET 253G486 [ JRI GENERAL PATTON 213B97 ET  
DDGR LOBO 5J [ JRI MS SECRET BLEND 253E386 ET  
DDGR 124G [ VRT LAZY TV NOTCH A781  
[ DDGR LILY 45U  
CIRS CIRS DRIVEN 141Y [ CIRS DECADE 278U2  
CIRS 3901A [ DCSF POST ROCK MARY 154N1  
RHRT MISS TREVOR BRASS U62 ET [ DCSF POST ROCK TOP BRASS ET  
[ HHF TREVOR C17

CE	BW	WW	YW	MK	TM	CEM	ST	YG	CW	REA	MB
10.2	1.2	72	109	18	55	3	16.4	-0.24	26	0.56	0.01



Bonus granddaughters  
Addy and Alaina  
exhibiting HERC Linda  
and CIRS Lora at the  
2025 Cattlemen's  
Congress.





Very high-performing group of females that are all really, really good! You can't go wrong with any of these girls! These girls will all be top-end brood cows in any herd. Top-end donor potential in each of these heifers! Buy the set of three and keep them together!



Big time females here! The 79A heifer could of easily been the lead show heifer. A group of long-made, very powerful, set of females that will do a lot of great things in the future.

**78A CIRS P668M**  
**AMGV1619502** | 3/4/2024 | P668M **BW**  
 Heifer | Polled | Red | PB 99.9% **72**

SJC FREEDOM 178F ET [ VAA LEACHMAN NEW DAY 205B  
 EGL FOSTERS LO17 ET [ BB MISS 61Y  
 EGL PHOEBE G374 [ EGL BULLSEYE C154 ET  
 [ AKR 349A  
 KHR 25A [ KHR 39Y  
 [ KHR 156Y  
**JMR DIANA JMR 668D** [ JCGR BAR GT LOUIE 2J  
 [ JMR WILLA 905W  
 JMR BJ JMR 447B

CE	BW	WW	YW	MK	TM	CEM	ST	YG	CW	REA	MB
8.6	1.2	73	98	19	56	5	14.8	-0.38	24	0.76	-0.17

**79A CPSX 1541M**  
**AMGV1619482** | 2/23/2024 | 1541M **BW**  
 Heifer | Polled | Red | PB 93.8% **73**

DCSF POST ROCK POWER BUILT 37B8 [ JRI TOP PRODUCER 282Z3  
 [ DCSF POST ROCK WILMA 298Z8 ET  
**CIRS 416G** [ CIRS DECADE 278U2  
 CIRS 16B [ LDJ MS GERANIUM T526  
 HTFB MR BRANDED MAN G909 [ BABR BRANDED MAN 3400A  
 [ HTFG MS HOPPY T167  
**HRRR 541J** [ LCC SEACREST  
 LCC 122C [ CIRS CIRS 122TY

CE	BW	WW	YW	MK	TM	CEM	ST	YG	CW	REA	MB
11.6	0.6	72	110	22	58	5	14.5	-0.21	35	0.71	-0.04

**78B CIRS P455M**  
**AMGV1619501** | 3/14/2024 | P455M **BW**  
 Heifer | Polled | Red | PB 87.5% **78**

JRI TOP PRODUCER 282Z3 [ JRI POP A TOP 197T83  
**DCSF POST ROCK POWER BUILT 37B8** [ JRI MS GRAND CANYON 282S2  
 DCSF POST ROCK WILMA 298Z8 ET [ TAU MR KRUGERRAND 70M 130P  
 [ DCSF POST ROCK WILMA 261P1 ET  
 KHR 84Z [ KHR 25X  
 [ KHR 006X  
**JMR BARBIE JMR 455B** [ KHR LOUIE KHR 09W  
 [ KHR 941J  
 JMR YVETTE JMR 108Y

CE	BW	WW	YW	MK	TM	CEM	ST	YG	CW	REA	MB
13.5	-0.8	60	86	23	53	6	16.8	-0.29	24	0.71	-0.05

**79B CIRS 6454M**  
**AMGV1619463** | 3/20/2024 | 6454M **BW**  
 Heifer | Polled | Red | PB 99.9% **80**

HDG HILLSDOWN FINNEGAN 4F [ DL JEN-TY DYNAMITE  
**LRSF CORVETTE J168** [ HDG AVERY 13D  
 LRSF SNAZZY C79 [ RUP RUPPLE YUKON 301P  
 [ LRSF SNAZZY Y26  
 SLMG TRACTION 1C [ RWG TRACTION 7412  
 [ CJY CLAYJOHNS Z615N  
**CIRS 4540D** [ CIRS DECADE 278U2  
 CIRS 540B [ EGL G540

CE	BW	WW	YW	MK	TM	CEM	ST	YG	CW	REA	MB
10.5	1.2	76	111	25	63	6	13.7	-0.2	34	0.58	0.09

**78C CIRS 956M**  
**AMGV1619452** | 4/2/2024 | 956M **BW**  
 Heifer | Polled | Red | PB 89.1% **77**

FMH 2020 MR AT EASE 510C [ BNC AT EASE A357  
**DCH HILLE G523 ET** [ TJB 105X MS VELVET  
 DCH HILLE T801 THREE SPEEDET [ DAR PURE POWER  
 [ DCH HILLE L232 LANA  
 DCSF POST ROCK POWER BUILT 37B8 [ JRI TOP PRODUCER 282Z3  
**CIRS 956G** [ DCSF POST ROCK WILMA 298Z8 ET  
 CIRS M56X ET [ MAGNUM (0715094)  
 [ CIRS KATRINA

CE	BW	WW	YW	MK	TM	CEM	ST	YG	CW	REA	MB
12.4	1.2	63	93	28	60	5	16.7	-0.22	30	0.75	0.14

**79C CIRS 04M**  
**AMGV1619498** | 4/23/2024 | 04M **BW**  
 Heifer | Polled | Red | PC 43.8% **84**

DCSF POST ROCK POWER BUILT 37B8 [ JRI TOP PRODUCER 282Z3  
**CIRS 44F** [ DCSF POST ROCK WILMA 298Z8 ET  
 CIRS POINSETTIA [ EGL FOSTERS LO17 ET  
 [ JRI MS NEW RELEASE 285J65  
 O4 [ ]  
 [ ]

CE	BW	WW	YW	MK	TM	CEM	ST	YG	CW	REA	MB
9.3	0.6	63	89	20	51	5	6.9	-0.01	36	0.38	0.26





Another very high quality set of females that are all long-bodied, powerful, and flat good! Look these girls up! Any one of these girls could end up in the donor pen.

Wow, where to start on these females! We think the 81A female could be a donor in no time! If you like raising bulls check her out! Tons of quality and potential in these gals!

**80A CIRS 1119M**  
**AMGV1619454** | 3/11/2024 | 1119M **BW**  
 Heifer | Polled | Red | *PB* 89.9% **72**

HDG HILLSDOWN FINNEGAN 4F  
**LRSF CORVETTE J168**  
 LRSF SNAZZY C79

DL JEN-TY DYNAMITE  
 HDG AVERY 13D

RUP RUPPLE YUKON 301P  
 LRSF SNAZZY Y26

CIRS RIGHT TIME  
**CIRS 119ZJ**  
 TAU MS FANNY 2116Z

DCSF POST ROCK POWER BUILT 37B8  
 GGRR GILLY'S CPR DOLL 22Y

TAU MR HY-PER ACTIVE 60W ET  
 TAU MS GRIDIRON 0179X

CE	BW	WW	YW	MK	TM	CEM	ST	YG	CW	REA	MB
12.4	-0.2	69	101	26	61	7	14.1	-0.18	31	0.58	0.09

**81A HERC 86M**  
**AMGV1619507** | 2/15/2024 | 86M **BW**  
 Heifer | Polled | Black | *BA* 75% **82**

JMDS FREIGHTLINER  
**BNC MR. HOJER D6268**  
 BNC MISS HOJER Y0160

CRAN W10 ET  
 DCH HILLE T114 TACO

S D S NEWSLINE 654S  
 BNC MISS HOJER T7126

GHGF YOUNG GUN C310  
**CIRS 6F**  
 6 RG302

FMGF BLUE'S IMPACT 001X  
 GHGF CONTESSA 310T

CIRS DECADE 278U2  
 TRI B BLACKCAP PRIDE 2525

CE	BW	WW	YW	MK	TM	CEM	ST	YG	CW	REA	MB
9.1	1.8	66	101	26	59	0	11.1	-0.21	39	0.72	0.23

**80B CIRS A56M**  
**AMGV1619478** | 3/23/2024 | A56M **BW**  
 Heifer | Polled | Red | *PC* 45.3% **80**

FMH 2020 MR AT EASE 510C  
**DCH HILLE G523 ET**  
 DCH HILLE T801 THREE SPEEDET

BNC AT EASE A357  
 TJB 105X MS VELVET

DAR PURE POWER  
 DCH HILLE L232 LANA

A56

CE	BW	WW	YW	MK	TM	CEM	ST	YG	CW	REA	MB
12.6	0.6	66	98	33	66	7	10.5	-0.01	48	0.65	0.48

**81B CIRS 624M**  
**AMGV1619308** | 3/4/2024 | 624M **BW**  
 Heifer | Polled | Black | *BA* 67.2% **81**

MDR FIRST ROUND PICK 9824G ET  
**MDR STONEY LARUE 1572J ET**  
 MDR ELLY ZENDT 702E ET

MDR FIRST STEP 7549E  
 DOBSON EMPRESS 301A

DAMERON FIRST CLASS  
 MDR PRINCESS 200Z

CCRO CAROLINA EXCLUSIVE 1230Y  
**MDR DANICE 624D ET**  
 VER PRETTY WOMAN 106X ET

DCSF POST ROCK SILVER 233U1  
 CCRO MS C-CROSS EC / 7309T

HYEK BLACK IMPACT 3960N  
 LJSA PAULETTE 503E

CE	BW	WW	YW	MK	TM	CEM	ST	YG	CW	REA	MB
9.9	1.4	78	126	21	62	4	14	-0.09	48	0.53	0.3

**80C CIRS 572M**  
**AMGV1619443** | 3/27/2024 | 572M **BW**  
 Heifer | Polled | Red | *PB* 99.9% **78**

HDG HILLSDOWN FINNEGAN 4F  
**LRSF CORVETTE J168**  
 LRSF SNAZZY C79

DL JEN-TY DYNAMITE  
 HDG AVERY 13D

RUP RUPPLE YUKON 301P  
 LRSF SNAZZY Y26

CIRS KING  
**CIRS 33NTC ET**  
 CIRS 72NW

RAM 460H RAMBO  
 BDCG DAWSON CREEK CARRIE

CIRS RAMON  
 SEPT VELVET TOUCH N87 ET

CE	BW	WW	YW	MK	TM	CEM	ST	YG	CW	REA	MB
10.7	1	70	97	24	59	6	11.3	-0.26	34	0.64	0.05

**81C CIRS 58M**  
**AMGV1619436** | 3/4/2024 | 58M **BW**  
 Heifer | Polled | Black | *PB* 86.2% **83**

GHGF YOUNG GUN C310  
**CIRS HALEN 717H**  
 TSP 417B

FMGF BLUE'S IMPACT 001X  
 GHGF CONTESSA 310T

JOB DANELL RASCAL 25Z  
 TSP PARIS 922P

OZZ EXT GOVENOR 3N  
**OZZ JETSTREAM 8 C**  
 OZZ JULIE 7A

FHG FLYING H EXCLUSIVE  
 OZZ CHA MICHELL 74L

DCSF POST ROCK WESTERN 230X2  
 ISAACS ERICA 7110

CE	BW	WW	YW	MK	TM	CEM	ST	YG	CW	REA	MB
12.4	0.2	63	94	28	59	6	13.9	-0.24	20	0.62	0.25



A couple full sisters with the B and C heifers! Tons of growth and performance in these girls! They will sure make money in the pounds that they will wean off! B and C are out of the great 22Y cow that has hardly ever missed raising high-end cattle.

Another high-performing group of females! These girls are big and stout with nice, square hips! 83C is only an April with a lot of true shape and growth!

**82A CIRS 07HM**  
**AMGV1619500** | 1/11/2024 | 07HM **BW**  
 Heifer | Polled | Black | PB 99.9% **69**

KHR 79B	[ KHR 01Z KHR 267Z
<b>TMMW MR MONTANA 231E</b>	[ JKGF 43U TMMW BLK BREEZE KRUGER
TMMW MISS GRANITE 150Z	
TMMW MR MONTANA 231E	[ KHR 79B TMMW MISS GRANITE 150Z
<b>WOAK MONTANAS DELILA</b>	[ CIRS DECADE 278U2 WOAK CABERNET 14X
WOAK DELILA 10A	

CE	BW	WW	YW	MK	TM	CEM	ST	YG	CW	REA	MB
16.7	-1.8	72	104	25	61	11	15.5	-0.22	26	0.6	0.18

**83A CIRS 2965M**  
**AMGV1619515** | 1/31/2024 | 2965M **BW**  
 Heifer | Polled | Black | PB 87.5% **73**

GHGF YOUNG GUN C310	[ FMGF BLUE'S IMPACT 001X GHGF CONTESSA 310T
<b>CIRS HALEN 717H</b>	[ JOB DANELL RASCAL 25Z TSP PARIS 922P
TSP 417B	
CIRS DECADE 278U2	[ EGL FOSTERS LO17 ET EGL GAIL M278
<b>CIRS 9645K</b>	[ B&D L1 DOMINO 5277 CIRS 4540D
CIRS 6454G	

CE	BW	WW	YW	MK	TM	CEM	ST	YG	CW	REA	MB
12.4	0.1	60	84	25	55	3	10.6	-0.32	16	0.68	0.01

**82B CIRS 9-M ET**  
**AMGV1619477** | 3/16/2024 | 9-M **BW**  
 Heifer | Polled | Black | PB 99.9% **90**

GHGF YOUNG GUN C310	[ FMGF BLUE'S IMPACT 001X GHGF CONTESSA 310T
<b>CIRS HALEN 717H</b>	[ JOB DANELL RASCAL 25Z TSP PARIS 922P
TSP 417B	
DCH HILLE W184 WASP	[ DCH HILLE M118 MAJESTY DCH HILLE M121 MACARONI
<b>GGRR GILLY'S CPR DOLL 22Y</b>	[ GGRR GILLY'S WINNER R26 GGRR GILLY'S P87
GGRR GILLY'S KARA 709T	

CE	BW	WW	YW	MK	TM	CEM	ST	YG	CW	REA	MB
12.4	0.5	64	98	29	61	5	12.4	-0.34	27	0.86	-0.06

**83B CIRS 819M**  
**AMGV1619447** | 3/29/2024 | 819M **BW**  
 Heifer | Polled | Black | PB 82.1% **80**

DCH HILLE G523 ET	[ FMH 2020 MR AT EASE 510C DCH HILLE T801 THREE SPEEDET
<b>CIRS KORNERSTONE 22EK</b>	[ DCSF POST ROCK POWER BUILT 37B8 GGRR GILLY'S CPR DOLL 22Y
CIRS 22YE	
DCSF POST ROCK POWER BUILT 37B8	[ JRI TOP PRODUCER 282Z3 DCSF POST ROCK WILMA 298Z8 ET
<b>CIRS 19AH</b>	[ PLA CISCO 1W PLA MISS VRD 623S
PLA MISS CISCO 316A	

CE	BW	WW	YW	MK	TM	CEM	ST	YG	CW	REA	MB
10.6	2.2	78	121	22	61	6	14.4	-0.24	31	0.82	0.07

**82C CIRS 63M ET**  
**AMGV1619437** | 3/17/2024 | 63M **BW**  
 Heifer | Polled | Black | PB 99.9% **87**

GHGF YOUNG GUN C310	[ FMGF BLUE'S IMPACT 001X GHGF CONTESSA 310T
<b>CIRS HALEN 717H</b>	[ JOB DANELL RASCAL 25Z TSP PARIS 922P
TSP 417B	
DCH HILLE W184 WASP	[ DCH HILLE M118 MAJESTY DCH HILLE M121 MACARONI
<b>GGRR GILLY'S CPR DOLL 22Y</b>	[ GGRR GILLY'S WINNER R26 GGRR GILLY'S P87
GGRR GILLY'S KARA 709T	

CE	BW	WW	YW	MK	TM	CEM	ST	YG	CW	REA	MB
12.4	0.5	64	98	29	61	5	12.4	-0.34	27	0.86	-0.06

**83C HERC 932M**  
**AMGV1619510** | 4/9/2024 | 932M **BW**  
 Heifer | Polled | Black | PB 99.9% **82**

FMGF BLUE'S IMPACT 001X	[ HYEK BLACK IMPACT 3960N FMGF ONCE IN A BLUE MOON ET
<b>GHGF YOUNG GUN C310</b>	[ GHGF MATE 47P JBOB 3103K ET
GHGF CONTESSA 310T	
DCH HILLE C123	[ DCH HILLE Y109 DCH HILLE A321
<b>OZZ 32G REBA</b>	[ DCSF POSTROCK WESTERN 271X1ET OZZ HALLMARK DELIGHT 48X
OZZ NINA 77A	

CE	BW	WW	YW	MK	TM	CEM	ST	YG	CW	REA	MB
11.1	1.1	63	89	29	60	2	13.4	-0.29	23	0.7	0.08





Moderate set of really good black heifers! Really easy-doing, deep-bodied set with a really attractive look from the side! You can't go wrong with any of these girls.

Tons of quality in this pen throughout the whole group! The C heifer only being a late May sure has the growth to keep up with anything! B and C could of easily been show heifers! All these heifers have a lot of power and capacity.

**84A** **CIRS K657M**  
**AMGV1619310** | 3/12/2024 | K657M **BW**  
 Heifer | Polled | Black | PB 99.9% **65**

- DCH HILLE C169 [ DCHD ARIAT 127A
- DCH HILLE H719 HAGAR** [ DCH HILLE A105
- DCH HILLE C205 [ DCH HILLE Y165
- [ DCH HILLE S107 SEA BREEZE
- PTL ELI 117E [ PTL 157C
- DCH HILLE K657** [ PTL 123B
- DCH HILLE Z132 [ DCH HILLE T266 TYE
- [ DCH HILLE P154 PEACOCK

CE	BW	WW	YW	MK	TM	CEM	ST	YG	CW	REA	MB
16.7	-0.9	73	112	23	60	9	14.1	-0.21	35	0.57	0.22

**85A** **CIRS 2783M**  
**AMGV1619458** | 2/9/2024 | 2783M **BW**  
 Heifer | Polled | Black | PB 99.9% **72**

- GHGF YOUNG GUN C310 [ FMGF BLUE'S IMPACT 001X
- CIRS HALEN 717H** [ GHGF CONTESSA 310T
- TSP 417B [ JOB DANELL RASCAL 25Z
- [ TSP PARIS 922P
- CIRS OVERDRIVE [ CIRS DECADE 278U2
- CIRS 83EJ** [ DCSF POST ROCK MARY 154N1
- CIRS 83E [ GHGF YOUNG GUN C310
- [ SEGA 83A

CE	BW	WW	YW	MK	TM	CEM	ST	YG	CW	REA	MB
12.9	0.1	59	84	27	57	3	10.6	-0.33	21	0.78	0.09

**84B** **CIRS A56YM**  
**AMGV1619479** | 3/24/2024 | A56YM **BW**  
 Heifer | Polled | Black | PB 99.9% **84**

- FHG FLYING H GRAND SLAM 128D ET [ FHG FLYING H MR TRACTION 45B
- FHG FLYING H MR GRANDSLAM 124K** [ FHG FLYING H MS MHD 139Y
- FHG FLYING H MS 355Z/45B 312D ET [ FHG FLYING H MR TRACTION 45B
- [ FHG FLYING H MS IDEAL 355Z
- RAM 460H RAMBO [ TLR COCOA 35C
- CIRS CIRS 56AY ET** [ RAM 233E
- DMF 622B [ HHF W21 POLLED PATRIOT
- [ DMF 326Z

CE	BW	WW	YW	MK	TM	CEM	ST	YG	CW	REA	MB
11	0.9	57	77	24	53	5	15.4	-0.3	20	0.66	0.07

**85B** **CIRS 8168M**  
**AMGV1619467** | 3/20/2024 | 8168M **BW**  
 Heifer | Polled | Black | PB 81.9% **77**

- FMH 2020 MR AT EASE 510C [ BNC AT EASE A357
- DCH HILLE G523 ET** [ TJB 105X MS VELVET
- DCH HILLE T801 THREE SPEEDET [ DAR PURE POWER
- [ DCH HILLE L232 LANA
- TJB VICKRAM 342A-ET [ STON STON XTERMINATOR 7X
- SEPT BLACKBIRD F168 ET** [ TJB VELVET 912U ET
- TJB BLACKBIRD 827T 314A-ET [ TAU GUNSLINGER 19U
- [ TJB BLACKBIRD 827T ET

CE	BW	WW	YW	MK	TM	CEM	ST	YG	CW	REA	MB
11.2	1.1	67	106	24	58	5	19.6	-0.18	38	0.74	0.35

**84C** **CIRS 922M**  
**AMGV1619451** | 4/22/2024 | 922M **BW**  
 Heifer | Polled | Black | PB 82.8% **84**

- FMH 2020 MR AT EASE 510C [ BNC AT EASE A357
- DCH HILLE G523 ET** [ TJB 105X MS VELVET
- DCH HILLE T801 THREE SPEEDET [ DAR PURE POWER
- [ DCH HILLE L232 LANA
- DCH HILLE C123 [ DCH HILLE Y109
- OZZ 22G TORI** [ DCH HILLE A321
- OZZ LEGACY HANNA 10W [ OZZ IDEAL LEGACY 56R

CE	BW	WW	YW	MK	TM	CEM	ST	YG	CW	REA	MB
12.9	1.7	71	108	30	65	8	14.7	-0.16	38	0.75	0.2

**85C** **CIRS 833M**  
**PENDING** | 5/24/24 | 833M **BW**  
 Heifer | Polled | Black | BA 66% **70**

- DCSF POST ROCK POWER BUILT 37B8 [ JRI TOP PRODUCER 282Z3
- CIRS RIGHT TIME 22YF** [ DCSF POST ROCK WILMA 298Z8 ET
- GGRR GILLY'S CPR DOLL 22Y [ DCH HILLE W184 WASP
- [ GGRR GILLY'S KARA 709T
- PLA DOWN PAYMENT 15D [ TAU MR IN FOCUS 22Z
- RAIL MS FERGIE 833F** [ PLA MISS GUNSLINGER 213Z ET
- DMRS MS OUTLINE 134Y [ LEE'S OUTLINE 7047
- [ DMRS LEILA 148L

CE	BW	WW	YW	MK	TM	CEM	ST	YG	CW	REA	MB



A set of younger females that are really deep sided and appear that they will be easy doing in production! Lots of quality in this pen again!



Really uniform set of females. Maybe a little lower percentage than some, but the quality sure makes up for it! High-end type females with a lot of power, look, and depth of body!

**86A** **CIRS D593M**  
**AMGV1619307** | 3/27/2024 | D593M  
**Heifer** | Polled | Black | *PB* 99.9% **BW**  
81

SKF DUNN'S DESTINATION 029E [ TMMW DESTINATION 82Y  
**DBRG MR DESTINATION 931G** [ SKF DUNN'S MISS JACKPOT 473B  
 DBRG MISS TWISTER 706E [ DBRG TWISTER 451B  
 [ DBRG MS WATCHMAN 5402C  
 DCH HILLE Z327 [ FRL FIR RIVER XAMPLE 29X  
**DCH HILLE D593** [ DCH HILLE U198 ULTRASOFT  
 DCH HILLE Y107 [ DCH HILLE W287 WOW  
 [ DCH HILLE W130 WINDFALL

CE	BW	WW	YW	MK	TM	CEM	ST	YG	CW	REA	MB
12.6	0.6	76	118	25	63	9	15	-0.08	42	0.47	0.12

**87A** **CIRS C11M**  
**AMGV1619471** | 3/31/2024 | C11M  
**Heifer** | Polled | Black | *PC* 43.8% **BW**  
70

DCSF POST ROCK POWER BUILT 37B8 [ JRI TOP PRODUCER 282Z3  
**CIRS RIGHT TIME** [ DCSF POST ROCK WILMA 298Z8 ET  
 GGRR GILLY'S CPR DOLL 22Y [ DCH HILLE W184 WASP  
 [ GGRR GILLY'S KARA 709T  
 C11 [ ]

CE	BW	WW	YW	MK	TM	CEM	ST	YG	CW	REA	MB
12.9	-1.3	62	90	22	52	6	9.4	-0.14	34	0.5	0.15

**86B** **CIRS 480M**  
**AMGV1619442** | 4/1/2024 | 480M  
**Heifer** | Polled | Black | *PB* 82.1% **BW**  
69

DCH HILLE G523 ET [ FMH 2020 MR AT EASE 510C  
**CIRS KORNERSTONE 22EK** [ DCH HILLE T801 THREE SPEEDET  
 CIRS 22YE [ DCSF POST ROCK POWER BUILT 37B8  
 [ GGRR GILLY'S CPR DOLL 22Y  
 RWG TRACTION 7412 [ RWG ROYAL RESERVE 5066  
**DLW MS TRACTION** [ RWG NINE LIFE KITTY 21N  
 DLW MS GOOD NIGHT 134Y OF 612 [ CTR GOOD NIGHT 715T  
 [ DLW MS RIGHT TIME 612S

CE	BW	WW	YW	MK	TM	CEM	ST	YG	CW	REA	MB
15.7	-0.9	68	103	25	59	8	16.3	-0.22	35	0.71	0.08

**87B** **CIRS C8M**  
**AMGV1619484** | 4/18/2024 | C8M  
**Heifer** | Polled | Black | *PC* 43.8% **BW**  
71

DCSF POST ROCK POWER BUILT 37B8 [ JRI TOP PRODUCER 282Z3  
**CIRS 44F** [ DCSF POST ROCK WILMA 298Z8 ET  
 CIRS POINSETTIA [ EGL FOSTERS LO17 ET  
 [ JRI MS NEW RELEASE 285J65  
 C8 [ ]

CE	BW	WW	YW	MK	TM	CEM	ST	YG	CW	REA	MB
11.2	-0.5	62	86	21	52	6	6.3	0.01	41	0.4	0.31

**86C** **CIRS 974M**  
**AMGV1619453** | 4/21/2024 | 974M  
**Heifer** | Polled | Black | *PB* 87.5% **BW**  
0

DCSF POST ROCK POWER BUILT 37B8 [ JRI TOP PRODUCER 282Z3  
**CIRS RIGHT TIME** [ DCSF POST ROCK WILMA 298Z8 ET  
 GGRR GILLY'S CPR DOLL 22Y [ DCH HILLE W184 WASP  
 [ GGRR GILLY'S KARA 709T  
 DCSF POST ROCK POWER BUILT 37B8 [ JRI TOP PRODUCER 282Z3  
**CIRS 74SG** [ DCSF POST ROCK WILMA 298Z8 ET  
 CIRS 74S [ DMG DI GERONIMO 100H  
 [ EGL J446

CE	BW	WW	YW	MK	TM	CEM	ST	YG	CW	REA	MB
12.1	0.4	70	102	25	60	5	13.9	-0.31	20	0.74	0.05

**87C** **CIRS 96M**  
**AMGV1619439** | 4/28/2024 | 96M  
**Heifer** | Polled | Black | *BA* 64.1% **BW**  
79

DCSF POST ROCK POWER BUILT 37B8 [ JRI TOP PRODUCER 282Z3  
**CIRS 44F** [ DCSF POST ROCK WILMA 298Z8 ET  
 CIRS POINSETTIA [ EGL FOSTERS LO17 ET  
 [ JRI MS NEW RELEASE 285J65  
 OZZ RENO 76B [ SEDGWICKS FINAL ANSWER Y307  
**OZZ 6G REBECCA** [ WGN KING'S ROSE 86Y  
 OZZ SHOWGAL 65A [ MCBR C-BAR CONQUEST 194Y  
 [ WGN KINGS EMPRESS 79Y

CE	BW	WW	YW	MK	TM	CEM	ST	YG	CW	REA	MB
8.7	1.8	74	106	17	53	5	10.7	-0.12	31	0.47	0.07





Set of big-boned, big butt, big-topped females that will get right to work making money! Nice set of square-made females that will stay in the herd for a long time!

**88A CIRS 424DM**  
 AMGV1619460 | 2/17/2024 | 424DM **BW**  
 Heifer | Polled | Black | PB 99.9% **70**

- KHR 79B [ KHR 01Z
- TMMW MR MONTANA 231E [ KHR 267Z
- TMMW MISS GRANITE 150Z [ JKGF 43U
- [ TMMW BLK BREEZE KRUGER
- HYEK BLACK IMPACT 3960N [ HYEK BLACK IMPULSE 1296L
- [ HYEK BLACK RUBY 9604J
- SPFR 424D** [ JBOB CAROLINA FORTUNE 2564JET
- SPFR KEEPERS FORTUNE [ RLS VISAS KEEPER I 35S ET

CE	BW	WW	YW	MK	TM	CEM	ST	YG	CW	REA	MB
16.6	-1.9	67	98	23	56	10	16.4	-0.24	22	0.66	0.16

**88B HRRR 2728M**  
 PENDING | 4/8/24 | 2728M **BW**  
 Heifer | Polled | Black | PB 93% **73**

- DCSF POST ROCK TOP GUN 65F8 ET [ VLK C503 YOUNG GUN
- DCSF POST ROCK TOP GUN 300J2 [ DCSF POST ROCK WILMA 294ZE ET
- DCSF POST ROCK TWILA 11Z2 [ JRI GREAT WESTERN 254N68 ET
- [ DCSF POST ROCK TWILA 34X2
- CIRS DIESEL 57AD ET [ SLC FREEDOM 178F ET
- CIRS 7278K** [ EGL G386
- CIRS 278E [ GHGF YOUNG GUN C310
- [ CIRS 278R

CE	BW	WW	YW	MK	TM	CEM	ST	YG	CW	REA	MB

**88C JDPK 8254M**  
 AMGV1619495 | 4/17/2024 | 8254M **BW**  
 Heifer | Polled | Black | PB 93.8% **80**

- DCSF POST ROCK POWER BUILT 37B8 [ JRI TOP PRODUCER 282Z3
- CIRS RIGHT TIME** [ DCSF POST ROCK WILMA 298Z8 ET
- GGRR GILLY'S CPR DOLL 22Y [ DCH HILLE W184 WASP
- [ GGRR GILLY'S KARA 709T
- GHGF YOUNG GUN C310 [ FMGF BLUE'S IMPACT 001X
- [ GHGF CONTESSA 310T
- CIRS 2504F** [ RAM 606J
- CIRS 2504Z [ ]

CE	BW	WW	YW	MK	TM	CEM	ST	YG	CW	REA	MB
11	0.3	62	92	30	61	2	12.6	-0.32	15	0.61	0.03

This Sale will be broadcast live on the internet.



We are pleased to offer the 18th Annual Going to Grass Production Sale broadcast "live" over the Internet through DVAuction Services.

**First Time Users:**

- ✓ Visit the DVAuction website at [www.dvauction.com](http://www.dvauction.com)
- ✓ Click on the Register Tab
- ✓ Complete Registration and Applying to Bid at the 17th Annual Circle S Ranch Going to Grass Production Sale

We will be contacting your bank to verify information.

DVAuction will contact you to let you know that you have been approved to bid and buy at the sale "live" from your computer at home.

**Note:** You must have high speed internet access (DSL, T-1, or Broadband) to be able to bid during the sale.

**Any Questions:**

Contact Lori Brown 785-770-7469.

**We recommend that you register by March 31 for online bidding. Every attempt will be made to complete your application even if its on sale day.**



are the mother breed of the beef industry!

**88D CIRS 678M**  
 AMGV1619446 | 5/29/2024 | 678M **BW**  
 Heifer | Polled | Black | PB 94.6% **78**

- DCH HILLE G523 ET [ FMH 2020 MR AT EASE 510C
- CIRS KORNERSTONE 22EK** [ DCH HILLE T801 THREE SPEEDET
- CIRS 22YE [ DCSF POST ROCK POWER BUILT 37B8
- [ GGRR GILLY'S CPR DOLL 22Y
- LWHF JKGF IMPACT Y353 [ HYEK BLACK IMPACT 3960N
- [ LWHF JKGF TWILA 353W ET
- CIRS 30PD ET** [ EGL FOSTERS LO17 ET
- CIRS 278R [ EGL GAIL M278

CE	BW	WW	YW	MK	TM	CEM	ST	YG	CW	REA	MB
13.1	0.9	72	106	27	63	6	16.2	-0.26	27	0.79	0.02



Here are a set of four females that are really smooth-made with some depth of body and look! Little age difference in the group but a set of females that all are high quality in their own right!



# Circle S Ranch Clydesdales



Find us on Facebook!

[www.facebook.com/circlesgelbvieh](http://www.facebook.com/circlesgelbvieh)

**89A** CIRS 6M  
AMGV1619432 | 2/16/2024 | 6M **BW**  
Heifer | Polled | Black | PC 75% **68**

FHG FLYING H GRAND SLAM 128D ET | FHG FLYING H MR TRACTION 45B  
 FHG FLYING H MR GRANDSLAM 124K | FHG FLYING H MS MHD 139Y  
 FHG FLYING H MS 355Z/45B 312D ET | FHG FLYING H MR TRACTION 45B  
 | FHG FLYING H MS IDEAL 355Z  
 CIRS DECADE 278U2 | EGL FOSTERS LO17 ET  
 | EGL GAIL M278  
**6 RG302** | MILL BRAE RD AMBUSH 2127  
 TRI B BLACKCAP PRIDE 2525 | TRI B HIGH DIVIDEND 6352

CE	BW	WW	YW	MK	TM	CEM	ST	YG	CW	REA	MB
13.3	-0.5	62	90	23	54	7	13.2	-0.3	34	0.85	0.16

**89B** CIRS K494M  
AMGV1619309 | 3/14/2024 | K494M **BW**  
Heifer | Polled | Black | PB 99.9% **63**

PTL ELI 117E | PTL 157C  
 DCH HILLE H705 HERBIE | PTL 123B  
 DCH HILLE A213 ET | DCH HILLE M118 MAJESTY  
 | DCH HILLE U279 UNDERCURRENT  
 DCH HILLE F304 | DCH HILLE C169  
 DCH HILLE K494 | DCH HILLE Y307  
 DCH HILLE D552 | JOB DANELL CHOCO 53B  
 | DCH HILLE W133 WHIZ

CE	BW	WW	YW	MK	TM	CEM	ST	YG	CW	REA	MB
18.8	-3.6	65	88	24	56	11	19	-0.22	29	0.73	0.19

**89C** CIRS B153M  
AMGV1621049 | 5/24/2024 | B153M **BW**  
Heifer | Polled | Black | PB 99.9% **81**

SKF DUNN'S DESTINATION 029E | TMMW DESTINATION 82Y  
 DBRG MR DESTINATION 931G | SKF DUNN'S MISS JACKPOT 473B  
 DBRG MISS TWISTER 706E | DBRG TWISTER 451B  
 | DBRG MS WATCHMAN 5402C  
 DCHD GOLDEN BUCKLE GELV 068X | DCH HILLE R126 ROY  
 DCH HILLE B153 | DCHD GOLDEN BUCKLE GELV 068N  
 DCH HILLE Z180 | FRL FIR RIVER XAMPLE 29X  
 | DCH HILLE U220 UNLEADED

CE	BW	WW	YW	MK	TM	CEM	ST	YG	CW	REA	MB
14	0	72	110	29	65	10	15.5	-0.03	38	0.32	0.21

**89D** MAKE 434M  
AMGV1621292 | 3/30/24 | 434M **BW**  
Heifer | Polled | Black | PB 87% **0**

GHGF YOUNG GUN C310 | FMGF BLUE'S IMPACT 001X  
 CIRS HALEN 717H | GHGF CONTESSA 310T  
 TSP 417B | JOB DANELL RASCAL 25Z  
 | TSP PARIS 922P  
 EGL FOSTERS L017 ET | SLC FREEDOM 178F ET  
 CIRS 94K | EGL PHOEBE G374  
 OZZ 4G KELLY | OZZ RENO 76B  
 | DCH HILLE B136

CE	BW	WW	YW	MK	TM	CEM	ST	YG	CW	REA	MB





A really good set of red heifers! These girls match up to each other really well! If you're looking for a set that are all backed by really good cow families, here are your girls!

Nice set of females who's dams all have really nice teat and udders! These girls should last a long time and generate nice revenue!

**90A HRRR 883M**  
**AMGV1619509** | 3/10/2024 | 883M **BW**  
**Heifer** | Polled | Red | *PC* 75% **79**

HGG HILLSDOWN FINNEGAN 4F  
**LRSF CORVETTE J168**  
 LRSF SNAZZY C79

PADO MR. IMPACT 6610D ET  
**CIRS H83G**  
 CTR L1 DOMINETTE 2906Z

[ DL JEN-TY DYNAMITE  
 HDG AVERY 13D  
 RUP RUPPLE YUKON 301P  
 LRSF SNAZZY Y26  
 HYEK BLACK IMPACT 3960N  
 EGL P016 ET  
 GB L1 DOMINO 6134K  
 HH MISS ADVANCE 9206W

CE	BW	WW	YW	MK	TM	CEM	ST	YG	CW	REA	MB
13.1	0.1	70	99	20	55	7	10.6	-0.17	24	0.44	0.02

**91A HRRR 7516M**  
**AMGV1619508** | 4/4/2024 | 7516M **BW**  
**Heifer** | Polled | Red | *PB* 87.5% **77**

DCSF POST ROCK POWER BUILT 37B8  
**CIRS 44F**  
 CIRS POINSETTIA

CIRS DECADE 278U2  
**CIRS 516F**  
 HIGH MS BIANCA 8C16 ET

[ JRI TOP PRODUCER 282Z3  
 DCSF POST ROCK WILMA 298Z8 ET  
 EGL FOSTERS LO17 ET  
 JRI MS NEW RELEASE 285J65  
 EGL FOSTERS LO17 ET  
 EGL GAIL M278  
 TAU MR KRUGERRAND 70M 130P  
 KWHG MS BIANCA 8U19 ET

CE	BW	WW	YW	MK	TM	CEM	ST	YG	CW	REA	MB
9.8	0.8	64	86	18	50	4	10.9	-0.24	21	0.56	-0.07

**90B HRRR 5M**  
**AMGV1619492** | 3/19/2024 | 5M **BW**  
**Heifer** | Polled | Red | *PB* 95.3% **69**

FMH 2020 MR AT EASE 510C  
**DCH HILLE G523 ET**  
 DCH HILLE T801 THREE SPEEDET

LFA 278RT  
**CIRS 2325Z**  
 JCGR BAR GT MS 402M ET

[ BNC AT EASE A357  
 TJB 105X MS VELVET  
 DAR PURE POWER  
 DCH HILLE L232 LANA  
 CIRS PROWLER ET  
 CIRS 278R  
 SLC FREEDOM 178F ET  
 EGL F062

CE	BW	WW	YW	MK	TM	CEM	ST	YG	CW	REA	MB
14.2	-0.4	56	86	27	55	7	13	-0.2	33	0.73	0.12

**91B CIRS T61M**  
**AMGV1619504** | 4/7/2024 | T61M **BW**  
**Heifer** | Polled | Red | *PC* 43.8% **82**

DCSF POST ROCK POWER BUILT 37B8  
**CIRS RIGHT TIME**  
 GGRR GILLY'S CPR DOLL 22Y

**T61 (HERBIE X COML)**

[ JRI TOP PRODUCER 282Z3  
 DCSF POST ROCK WILMA 298Z8 ET  
 DCH HILLE W184 WASP  
 GGRR GILLY'S KARA 709T

CE	BW	WW	YW	MK	TM	CEM	ST	YG	CW	REA	MB
10.6	0.8	62	94	23	54	5	9.5	-0.19	21	0.46	0.12

**90C HERC 1136M**  
**AMGV1619455** | 4/3/2024 | 1136M **BW**  
**Heifer** | Polled | Red | *PB* 99.9% **70**

HGG HILLSDOWN FINNEGAN 4F  
**LRSF CORVETTE J168**  
 LRSF SNAZZY C79

CIRS OVERDRIVE  
**HERC 136J**  
 DCSF POST ROCK WILMA 226Y1 ET

[ DL JEN-TY DYNAMITE  
 HDG AVERY 13D  
 RUP RUPPLE YUKON 301P  
 LRSF SNAZZY Y26  
 CIRS DECADE 278U2  
 DCSF POST ROCK MARY 154N1  
 BDCG CITIZEN F39L ET  
 DCSF POST ROCK WILMA 147H ET

CE	BW	WW	YW	MK	TM	CEM	ST	YG	CW	REA	MB
13	-0.8	71	104	26	61	7	13.6	-0.22	32	0.59	0.07

**91C CIRS 66M**  
**AMGV1619438** | 4/27/2024 | 66M **BW**  
**Heifer** | Polled | Red | *PC* 43.8% **78**

DCSF POST ROCK POWER BUILT 37B8  
**CIRS 44F**  
 CIRS POINSETTIA

**CIRS 66**

[ JRI TOP PRODUCER 282Z3  
 DCSF POST ROCK WILMA 298Z8 ET  
 EGL FOSTERS LO17 ET  
 JRI MS NEW RELEASE 285J65

CE	BW	WW	YW	MK	TM	CEM	ST	YG	CW	REA	MB
10.6	-0.2	57	81	20	48	5	6.9	-0.2	18	0.41	0.03



A few differences in this pen! The B heifer has a lot of growth and stretch to her while the C heifer is a little more broody looking! The A heifer is a good combination the two!

All these girls appear to be big-time, bull-raising females! All are extremely powerfully built! Lots of shape and true power in each of these girls! The C heifer only being a May is really impressive with her overall power and length she offers.

**92A CIRS 2P374M**  
**AMGV1619474** | 2/23/2024 | 2P374M **BW**  
 Heifer | Polled | Red | PB 87.5% **73**

OGSG OVERTIME 175D [ GGGE 3G ZIP LINE 266Z  
 MGA OVERTIME 926G [ OGSG OGSG YOKO 175Y  
 MGA LEE 612D [ LRMC M81 U25  
 [ MGA LEE 205Z  
 JMR FELIX JMR 825F [ JRI PROFIT PRODUCER 254B32  
**CIRS P374K** [ JMR CHARLENE JMR 560C  
 JMR JMR 374 AMMANDA [ KHR LOUIE KHR 09W  
 [ JMR 101Y

CE	BW	WW	YW	MK	TM	CEM	ST	YG	CW	REA	MB
15.2	-1.1	55	77	21	49	7	15.6	-0.15	20	0.36	0.02

**93A CIRS 1533M**  
**AMGV1619457** | 3/27/2024 | 1533M **BW**  
 Heifer | Polled | Red | PB 90.6% **65**

JRI TRADE SECRET 253G486 [ JRI GENERAL PATTON 213B97 ET  
**DDGR LOBO 5J** [ JRI MS SECRET BLEND 253E386 ET  
 DDGR 124G [ VRT LAZY TV NOTCH A781  
 [ DDGR LILY 45U  
 CIRS RIGHT TIME [ DCSF POST ROCK POWER BUILT 37B8  
**CIRS 533J** [ GGRR GILLY'S CPR DOLL 22Y  
 CIRS 33NC [ RHGF RHGF 11A  
 [ CIRS DALE'S TRIBUTE

CE	BW	WW	YW	MK	TM	CEM	ST	YG	CW	REA	MB
12.5	0	64	95	21	53	6	15.4	-0.25	16	0.52	0.1

**92B CIRS A198M**  
**AMGV1619304** | 3/23/2024 | A198M **BW**  
 Heifer | Polled | Red | PB 99.9% **79**

DCH HILLE C169 [ DCHD ARIAT 127A  
**DCH HILLE H719 HAGAR** [ DCH HILLE A105  
 DCH HILLE C205 [ DCH HILLE Y165  
 [ DCH HILLE S107 SEA BREEZE  
 DCH HILLE U145 UPPERCUT [ DCHD GOLDEN BUCKLE GELV 030P  
**DCH HILLE A198** [ DCH HILLE N197 NURTURE  
 DCH HILLE L112 LAVISH [ TLR COCOA 35C  
 [ DCH HILLE J31 JEANS

CE	BW	WW	YW	MK	TM	CEM	ST	YG	CW	REA	MB
10.1	1.2	76	117	25	63	5	14.9	-0.2	45	0.74	0.01

**93B CIRS D505M**  
**AMGV1619306** | 3/30/2024 | D505M **BW**  
 Heifer | Polled | Red | PB 99.9% **82**

DCH HILLE C169 [ DCHD ARIAT 127A  
**DCH HILLE H719 HAGAR** [ DCH HILLE A105  
 DCH HILLE C205 [ DCH HILLE Y165  
 [ DCH HILLE S107 SEA BREEZE  
 FLAD FLADELAND DJW ROCKM SOCKM [ BLB GOODVIEW PDL THE ROCK 7Y  
**DCH HILLE D505** [ FLAD DJW WINTER 202W  
 DCH HILLE S115 SUZY [ FHG FLYING H LANDMARK 051P  
 [ DCH HILLE P235 PREVIEW

CE	BW	WW	YW	MK	TM	CEM	ST	YG	CW	REA	MB
13.6	0.2	72	112	25	61	5	15.8	-0.24	41	0.85	0.22

**92C CIRS C264M**  
**AMGV1619305** | 3/25/2024 | C264M **BW**  
 Heifer | Polled | Red | PB 99.9% **93**

DCHD ARIAT 127A [ DCH HILLE Y342  
**DCH HILLE C169** [ DCHD BAILEY'S GIRL 127W  
 DCH HILLE A105 [ DCH HILLE W287 WOW  
 [ DCH HILLE Y270  
 DCH HILLE Z198 [ DCHD GOLDEN BUCKLE GELV 068X  
**DCH HILLE C264** [ DCH HILLE W188 WITCH CRAFT  
 DCH HILLE Y156 ET [ DCHD GOLDEN BUCKLE GELV 030P  
 [ DCH HILLE M225 MAGNOLIA

CE	BW	WW	YW	MK	TM	CEM	ST	YG	CW	REA	MB
11.2	2.5	78	124	29	67	6	16.2	-0.27	44	0.89	0.25

**93C CIRS 874M**  
**AMGV1619449** | 5/14/2024 | 874M **BW**  
 Heifer | Polled | Red | PB 94.6% **88**

DCH HILLE G523 ET [ FMH 2020 MR AT EASE 510C  
**CIRS KORNERSTONE 22EK** [ DCH HILLE T801 THREE SPEEDET  
 CIRS 22YE [ DCSF POST ROCK POWER BUILT 37B8  
 [ GGRR GILLY'S CPR DOLL 22Y  
 GHGF YOUNG GUN C310 [ FMGF BLUE'S IMPACT 001X  
**CIRS 74SH** [ GHGF CONTESSA 310T  
 CIRS 74S [ DMG DI GERONIMO 100H  
 [ EGL J446

CE	BW	WW	YW	MK	TM	CEM	ST	YG	CW	REA	MB
9.9	3.4	74	110	31	68	3	14.2	-0.29	28	0.8	0.14





Some higher-growth females that will be very useful for years to come!  
Some differences in this pen but very good quality throughout the set!



A group of bigger-framed females that have really nice growth to them!  
Lots of performance in the C heifer! They are all backed by really good feet and uddered cows! Should raise some really nice feeder cattle!

**94A CIRS 83AM**  
**AMGV1619476** | 3/30/2024 | 83AM **BW**  
 Heifer | Polled | Red | PB 82.2% **82**

FMH 2020 MR AT EASE 510C  
**DCH HILLE G523 ET**  
 DCH HILLE T801 THREE SPEEDET  
 SEGA BUD ICE 224J  
**SEGA 83A**  
 SEGA 8Y

[ BNC AT EASE A357  
 TJB 105X MS VELVET  
 DAR PURE POWER  
 DCH HILLE L232 LANA  
 GKT BUD 11G  
 HGS B MISS JOHN BOY 224X  
 SEGA TRAPPER 187T  
 MELISSA'S FAME 407

CE	BW	WW	YW	MK	TM	CEM	ST	YG	CW	REA	MB
13.1	1.2	66	95	30	63	7	13.8	-0.16	32	0.65	0.25

**95A CIRS 21M**  
**AMGV1619433** | 2/7/2024 | 21M **BW**  
 Heifer | Polled | Black | PC 75% **74**

GHGF YOUNG GUN C310  
**CIRS HALEN 717H**  
 TSP 417B  
 EGL FOSTERS LO17 ET  
**CIRS 1K**  
 CIRS ALICE 3211A

[ FMGF BLUE'S IMPACT 001X  
 GHGF CONTESSA 310T  
 JOB DANELL RASCAL 25Z  
 TSP PARIS 922P  
 SLC FREEDOM 178F ET  
 EGL PHOEBE G374  
 TH 75J BAILOUT 144U ET  
 B&D MISS ADVANCE 7145

CE	BW	WW	YW	MK	TM	CEM	ST	YG	CW	REA	MB
10.7	1.6	56	78	24	52	4	8.3	-0.31	15	0.63	-0.08

**94B HRRR 181M**  
**AMGV1619491** | 4/18/2024 | 181M **BW**  
 Heifer | Polled | Red | PB 90.6% **69**

JRI TRADE SECRET 253G486  
**DDGR LOBO 5J**  
 DDGR 124G  
 DCSF POST ROCK TOP BRASS ET  
**BDGC DC 58A**  
 CIRS 58RW

[ JRI GENERAL PATTON 213B97 ET  
 JRI MS SECRET BLEND 253E386 ET  
 VRT LAZY TV NOTCH A781  
 DDGR LILY 45U  
 KCF KCF BENNETT PACESETTER A16  
 JGW 3R PLD WILMA 215A  
 EGL FOSTERS LO17 ET  
 MLLR 413M

CE	BW	WW	YW	MK	TM	CEM	ST	YG	CW	REA	MB
12.7	0.2	65	92	24	57	6	16.5	-0.28	23	0.54	0.05

**95B CIRS 7242M**  
**AMGV1619464** | 2/24/2024 | 7242M **BW**  
 Heifer | Polled | Black | PB 87.5% **73**

FHG FLYING H GRAND SLAM 128D ET  
**FHG FLYING H MR GRANDSLAM 124K**  
 FHG FLYING H MS 355Z/45B 312D ET

[ FHG FLYING H MR TRACTION 45B  
 FHG FLYING H MS MHD 139Y  
 FHG FLYING H MR TRACTION 45B  
 FHG FLYING H MS IDEAL 355Z  
 SLC FREEDOM 178F ET  
 EGL PHOEBE G374  
 DLW GOOD NIGHT 512T  
 BAGK MISS R096AR 2U

CE	BW	WW	YW	MK	TM	CEM	ST	YG	CW	REA	MB
11	0.2	64	89	26	58	6	14.7	-0.26	34	0.81	0.03

**94C HRRR 631M**  
**AMGV1619494** | 5/1/2024 | 631M **BW**  
 Heifer | Polled | Red | PB 93.8% **79**

DCSF POST ROCK POWER BUILT 37B8  
**CIRS 44F**  
 CIRS POINSETTIA  
 BCFG BUTLERS HILLBILLY HERO 71  
**HRRR HRRR HILLBILLY 12C**  
 CIRS 60NX

[ JRI TOP PRODUCER 282Z3  
 DCSF POST ROCK WILMA 298Z8 ET  
 EGL FOSTERS LO17 ET  
 JRI MS NEW RELEASE 285J65  
 JDPD ASTRO 407S  
 AAML MISS MOLLIE 70U  
 EGL FOSTERS LO17 ET  
 CIRS BOUND FOR BEAUTY 60N

CE	BW	WW	YW	MK	TM	CEM	ST	YG	CW	REA	MB
9.2	1.2	69	96	22	56	4	10.7	-0.22	26	0.54	-0.04

**95C CIRS 5264M**  
**AMGV1619461** | 4/18/2024 | 5264M **BW**  
 Heifer | Polled | Black | PB 94.6% **89**

DCH HILLE G523 ET  
**CIRS KORNERSTONE 22EK**  
 CIRS 22YE  
 CIRS 264C  
 EGL P264

[ FMH 2020 MR AT EASE 510C  
 DCH HILLE T801 THREE SPEEDET  
 DCSF POST ROCK POWER BUILT 37B8  
 GGRR GILLY'S CPR DOLL 22Y  
 EGL EXECUTIVE J159  
 EGL J801

CE	BW	WW	YW	MK	TM	CEM	ST	YG	CW	REA	MB
9.5	3.3	83	123	30	71	5	12.1	-0.19	36	0.75	0.19



Little bit of types and kinds in this pen! The A and B heifers are a little more moderate and the C heifer more of a higher performance heifer! Even with the few difference a nice set of red females!



A set of May heifers that are square made that should last a long time! Note the C heifer is gray, B heifer is black, and A is red!

**96A CIRS 6386M**  
**AMGV1619462** | 2/15/2024 | 6386M **BW**  
**Heifer** | Polled | Red | *PB* 99.9% **88**

HDG HILLSDOWN FINNEGAN 4F [ DL JEN-TY DYNAMITE  
 LRSF CORVETTE J168 [ HDG AVERY 13D  
 LRSF SNAZZY C79 [ RUP RUPPLE YUKON 301P  
 [ LRSF SNAZZY Y26  
 SLC FREEDOM 178F ET [ VAA LEACHMAN NEW DAY 205B  
**CIRS 50RD ET** [ BB MISS 61Y  
 EGL G386 [ EGL BULLSEYE C154 ET  
 [ AKR 345A

CE	BW	WW	YW	MK	TM	CEM	ST	YG	CW	REA	MB
7.8	2.4	72	104	20	56	4	12	-0.2	35	0.61	0.06

**97A CIRS 02M**  
**AMGV1619497** | 5/2/2024 | 02M **BW**  
**Heifer** | Polled | Red | *PC* 43.8% **76**

DCSF POST ROCK POWER BUILT 37B8 [ JRI TOP PRODUCER 282Z3  
**CIRS 44F** [ DCSF POST ROCK WILMA 298Z8 ET  
 CIRS POINSETTIA [ EGL FOSTERS L017 ET  
 [ JRI MS NEW RELEASE 285J65  
**O2** [ ]  
 [ ]

CE	BW	WW	YW	MK	TM	CEM	ST	YG	CW	REA	MB
10.2	0	63	87	23	54	5	6.9	-0.08	40	0.42	0.1

**96B HRRR 533M**  
**AMGV1619493** | 3/22/2024 | 533M **BW**  
**Heifer** | Polled | Red | *PB* 90.6% **80**

JRI TRADE SECRET 253G486 [ JRI GENERAL PATTON 213B97 ET  
**DDGR LOBO 5J** [ JRI MS SECRET BLEND 253E386 ET  
 DDGR 124G [ VRT LAZY TV NOTCH A781  
 [ DDGR LILY 45U  
 RHRT INDEPENDENCE L19 [ KCF BENNETT J25  
**HRRR 125C** [ TOP MIS RED JET E270H7  
 DCSF POST ROCK RED BAL 28T1 [ DCSF POST ROCK TOP BRASS ET  
 [ DCSF POST ROCK RED BAL 69R1

CE	BW	WW	YW	MK	TM	CEM	ST	YG	CW	REA	MB
10.4	2	72	105	22	58	5	16.8	-0.2	30	0.58	0.17

**97B CIRS 41M**  
**AMGV1619435** | 5/27/2024 | 41M **BW**  
**Heifer** | Polled | Black | *BA* 52.4% **68**

DCH HILLE G523 ET [ FMH 2020 MR AT EASE 510C  
**CIRS KORNERSTONE 22EK** [ DCH HILLE T801 THREE SPEEDET  
 CIRS 22YE [ DCSF POST ROCK POWER BUILT 37B8  
 [ GGRR GILLY'S CPR DOLL 22Y  
 SEDGWICKS FINAL ANSWER Y307 [ S A V FINAL ANSWER 0035  
**OZZ DEE DEE 1 B** [ SEDGWICKS LUCY W307  
 OZZ HEATHER 14Z [ OZZ OZZ CADAT ROSS 9X  
 [ OZZ IDEAL DIR WINN 5X

CE	BW	WW	YW	MK	TM	CEM	ST	YG	CW	REA	MB
14.7	0	75	122	26	64	10	15.8	-0.05	41	0.59	0.25

**96C CIRS 9678M**  
**AMGV1619470** | 5/31/2024 | 9678M **BW**  
**Heifer** | Polled | Red | *PB* 88.6% **76**

DCSF POST ROCK POWER BUILT 37B8 [ JRI TOP PRODUCER 282Z3  
**CIRS RIGHT TIME** [ DCSF POST ROCK WILMA 298Z8 ET  
 GGRR GILLY'S CPR DOLL 22Y [ DCH HILLE W184 WASP  
 [ GGRR GILLY'S KARA 709T  
 GDV T BAR S ACE'S HIGH 209D [ GDV T BAR S RELOAD 27A ET  
**CIRS 678G** [ GDV T BAR S MS 18B  
 CIRS 30PD ET [ LWHF JKGIF IMPACT Y353  
 [ CIRS 278R

CE	BW	WW	YW	MK	TM	CEM	ST	YG	CW	REA	MB
13.5	0.3	68	101	24	58	6	15.9	-0.3	18	0.68	-0.03

**97C CIRS P261M**  
**AMGV1621205** | 5/31/2024 | P261M **BW**  
**Heifer** | Polled | Gray | *PB* 99.9% **0**

FMGF BLUE'S IMPACT 001X [ HYEK BLACK IMPACT 3960N  
**GHGF YOUNG GUN C310** [ FMGF ONCE IN A BLUE MOON ET  
 GHGF CONTESSA 310T [ GHGF MATE 47P  
 [ JBOB 3103K ET  
 KHR LOUIE KHR 09W [ JCGR BAR GT LOUIE 2J  
**JMR ZAMORA JMR 261Z** [ KHR 717T  
 KHR 126L [ SLC FREEDOM 178F ET  
 [ KHR 638F

CE	BW	WW	YW	MK	TM	CEM	ST	YG	CW	REA	MB
12.7	-0.4	50	68	23	48	1	14.9	-0.38	17	0.7	0.05





If you're looking to move your herd to the next level here are your girls! Two full sisters out of a cow that's hardly ever missed, 22Y, and a popular Hereford bull Land Grant. Tons of future and cow power in these girls. All of these girls have so much power and length! Don't miss your chance on this great set!



Very impressive set of Gelford females. The 814 heifer would have been a show heifer if she was eligible! Lots of depth and power in these girls! All of their dam's are very good uddered and are great producing females.

**98A** **CIRS H9204M**  
**AMGV1619489** | 2/20/2024 | H9204M **BW**  
 Heifer | Polled | Red, white face | PC 50% **98**

SLC FREEDOM 178F ET [ VAA LEACHMAN NEW DAY 205B  
 EGL FOSTERS LO17 ET [ BB MISS 61Y  
 EGL PHOEBE G374 [ EGL BULLSEYE C154 ET  
 [ AKR 349A  
 [ ]  
 [ ]

CE	BW	WW	YW	MK	TM	CEM	ST	YG	CW	REA	MB
4.6	4.4	61	88	19	50	3	7	-0.24	17	0.47	-0.14

**99A** **HERC 814M**  
**AMGV1619506** | 3/19/2024 | 814M **BW**  
 Heifer | Polled | Red, white face | PC 70.3% **79**

FMH 2020 MR AT EASE 510C [ BNC AT EASE A357  
 DCH HILLE G523 ET [ TJB 105X MS VELVET  
 DCH HILLE T801 THREE SPEEDET [ DAR PURE POWER  
 [ DCH HILLE L232 LANA  
 CIRS 33NY [ CIRS DECADE 278U2  
**AHN 1414F** [ CIRS DALE'S TRIBUTE  
 MHF 88Z BRYE 1414B [ WLB NORTHERN EXPOSURE 980 88Z  
 [ LJE 7W MS TAILOR Y706

CE	BW	WW	YW	MK	TM	CEM	ST	YG	CW	REA	MB
15.2	1	60	87	23	54	8	12.6	-0.23	19	0.56	0.06

**98B** **CIRS 8123M ET**  
**AMGV1619466** | 3/1/2024 | 8123M **BW**  
 Heifer | Polled | Red, white face | PC 50% **73**

LOEWEN GENESIS G16 [ NJW 79Z Z311 ENDURE 173D ET  
**KSU LAND GRANT 153 ET** [ ANIMALLOEWEN 77 48 MISS 344N 4RB42ET  
 KSU MISS MISTY 956 ET [ R LEADER 6964  
 [ KJ 274S ROXY 482Y ET  
 DCH HILLE W184 WASP [ DCH HILLE M118 MAJESTY  
**GRRR GILLY'S CPR DOLL 22Y** [ DCH HILLE M121 MACARONI  
 GRRR GILLY'S KARA 709T [ GGRR GILLY'S WINNER R26  
 [ GGRR GILLY'S P87

CE	BW	WW	YW	MK	TM	CEM	ST	YG	CW	REA	MB
14.1	1.3	71	102	25	60	8	11.7	-0.23	16	0.6	-0.18

**99B** **CIRS 9121M**  
**AMGV1619469** | 4/18/2024 | 9121M **BW**  
 Heifer | Polled | Red, white face | PC 43.8% **72**

DCSF POST ROCK POWER BUILT 37B8 [ JRI TOP PRODUCER 282Z3  
**CIRS 44F** [ DCSF POST ROCK WILMA 298Z8 ET  
 CIRS POINSETTIA [ EGL FOSTERS LO17 ET  
 [ JRI MS NEW RELEASE 285J65  
 [ ]  
 [ ]

CE	BW	WW	YW	MK	TM	CEM	ST	YG	CW	REA	MB
11.5	-1.1	53	78	23	50	6	6.9	-0.09	16	0.24	0.06

**98C** **CIRS 1402M ET**  
**AMGV1619456** | 3/1/2024 | 1402M **BW**  
 Heifer | Polled | Red, white face | PC 50% **79**

LOEWEN GENESIS G16 [ NJW 79Z Z311 ENDURE 173D ET  
**KSU LAND GRANT 153 ET** [ ANIMALLOEWEN 77 48 MISS 344N 4RB42ET  
 KSU MISS MISTY 956 ET [ R LEADER 6964  
 [ KJ 274S ROXY 482Y ET  
 DCH HILLE W184 WASP [ DCH HILLE M118 MAJESTY  
**GRRR GILLY'S CPR DOLL 22Y** [ DCH HILLE M121 MACARONI  
 GRRR GILLY'S KARA 709T [ GGRR GILLY'S WINNER R26  
 [ GGRR GILLY'S P87

CE	BW	WW	YW	MK	TM	CEM	ST	YG	CW	REA	MB
14.1	1.3	71	102	25	60	8	11.7	-0.23	16	0.6	-0.18

**99C** **CIRS 841M**  
**AMGV1619448** | 4/20/2024 | 841M **BW**  
 Heifer | Polled | Red, white face | PC 43.8% **82**

DCSF POST ROCK POWER BUILT 37B8 [ JRI TOP PRODUCER 282Z3  
**CIRS RIGHT TIME** [ DCSF POST ROCK WILMA 298Z8 ET  
 GGRR GILLY'S CPR DOLL 22Y [ DCH HILLE W184 WASP  
 [ GGRR GILLY'S KARA 709T  
 B&D L1 DOMINO 5277 [ CL 1 DOMINO 215Z  
**CIRS H41H** [ L2 DOMINETTE 09469  
 XP L1 DOMINETTE 12023 [ XP L1 DOMINO 06067  
 [ XP L1 DOMINETTE 07013

CE	BW	WW	YW	MK	TM	CEM	ST	YG	CW	REA	MB
10.6	1.4	59	86	18	48	2	10.8	-0.2	6	0.3	-0.2



These black Gelfords are flat good! If you want a bull raising machine, look up 100B! She's about as powerful and cowy as any black Gelford that we have offered! Tremendous opportunity in any of these females.

Really complete set of females that are moderate-framed, yet packed full of power! We showed the 101A heifer in the AOB show at the Kansas State Fair and did very well with her. Really good set of females!

**100A** **CIRS H9237M**  
**AMGV1619490** | 2/4/2024 | H9237M **BW**  
**Heifer** | Polled | Black, white face | *PC* 37.5% **71**

JMDS FREIGHTLINER [ CRAN W10 ET  
 BNC MR. HOJER D6268 [ DCH HILLE T114 TACO  
 BNC MISS HOJER Y0160 [ S D S NEWSLINE 654S  
 [ BNC MISS HOJER T7126

9237

CE	BW	WW	YW	MK	TM	CEM	ST	YG	CW	REA	MB
10.8	-0.2	45	75	23	46	4	7.7	-0.12	26	0.38	0.1

**101A** **CIRS 59M**  
**AMGV1607432** | 3/15/2024 | 59M **BW**  
**Heifer** | Polled | Red, white face | *PC* 18.8% **88**

KCF BENNETT STRATEGY Z303 ET [ SCHU-LAR ON TARGET 22S  
**TH MASTERPLAN 183F** [ KCF MISS REVOLUTION X338 ET  
 TH 512X 145Y DOMINETTE 57B [ FTF PROSPECTOR 145Y  
 [ TH 122 71I DOMINETTE 512X ET

J D Ten X 324 [ AAR TEN X 7008 SA  
**CIRS 9AC** [ J D Beauty 1911  
 SAS ALMOST 33A [ EGL LIBERTY Y079 ET  
 [ CIRS 13X

CE	BW	WW	YW	MK	TM	CEM	ST	YG	CW	REA	MB
10.7	1.9	75	116	18	54	6	10.6	-0.06	25	0.43	0.22

**100B** **CIRS C10M ET**  
**AMGV1619480** | 3/19/2024 | C10M **BW**  
**Heifer** | Polled | Black, white face | *PC* 40.4% **99**

KCF BENNETT STRATEGY Z303 ET [ SCHU-LAR ON TARGET 22S  
**TH MASTERPLAN 183F** [ KCF MISS REVOLUTION X338 ET  
 TH 512X 145Y DOMINETTE 57B [ FTF PROSPECTOR 145Y  
 [ TH 122 71I DOMINETTE 512X ET  
 HYEK BLACK IMPACT 3960N [ HYEK BLACK IMPULSE 1296L  
**EPGG EPGG MS PRAIRIE ZIPPER** [ HYEK BLACK RUBY 9604J  
 EPGG MS PRAIRIE UNIQUE [ ABF 529P  
 [ CPGG MS PRAIRIE RUBY RED

CE	BW	WW	YW	MK	TM	CEM	ST	YG	CW	REA	MB
12.6	2.4	75	110	15	53	4	13	-0.09	31	0.55	0.07

**101B** **CIRS H9115M**  
**AMGV1619488** | 3/25/2024 | H9115M **BW**  
**Heifer** | Polled | Red, white face | *PC* 43.8% **74**

DCSF POST ROCK POWER BUILT 37B8 [ JRI TOP PRODUCER 282Z3  
**CIRS RIGHT TIME** [ DCSF POST ROCK WILMA 298Z8 ET  
 GGRR GILLY'S CPR DOLL 22Y [ DCH HILLE W184 WASP  
 [ GGRR GILLY'S KARA 709T

CE	BW	WW	YW	MK	TM	CEM	ST	YG	CW	REA	MB
11.9	-0.2	49	79	24	49	6	9.5	-0.24	10	0.41	0.05

**100C** **CIRS C12M**  
**AMGV1619481** | 5/3/2024 | C12M **BW**  
**Heifer** | Polled | Black, white face | *PC* 43.8% **78**

DCSF POST ROCK POWER BUILT 37B8 [ JRI TOP PRODUCER 282Z3  
**CIRS 44F** [ DCSF POST ROCK WILMA 298Z8 ET  
 CIRS POINSETTIA [ EGL FOSTERS LO17 ET  
 [ JRI MS NEW RELEASE 285J65

C12

CE	BW	WW	YW	MK	TM	CEM	ST	YG	CW	REA	MB
11.3	-0.9	58	79	22	51	6	6.9	-0.08	36	0.38	0.1

**101C** **CIRS H1922M**  
**AMGV1619486** | 4/21/2024 | H1922M **BW**  
**Heifer** | Polled | Red, white face | *PC* 43.8% **60**

DCSF POST ROCK POWER BUILT 37B8 [ JRI TOP PRODUCER 282Z3  
**CIRS RIGHT TIME** [ DCSF POST ROCK WILMA 298Z8 ET  
 GGRR GILLY'S CPR DOLL 22Y [ DCH HILLE W184 WASP  
 [ GGRR GILLY'S KARA 709T

H1922

CE	BW	WW	YW	MK	TM	CEM	ST	YG	CW	REA	MB
15.3	-3	41	67	24	44	8	9.5	-0.24	10	0.4	0.05





A set of four females that are square-made, and will raise really good calves I believe! Buy these girls, turn them out and watch them make lots of money in the future.

## 102A CIRS G2381M

AMGV1619516 | 3/8/2024 | G2381M **BW**  
 Heifer | Polled | Black, white face | PB 95.3% **70**

OGSG OVERTIME 175D [ GGGE 3G ZIP LINE 266Z  
 MGA OVERTIME 926G [ OGSG OGSG YOKO 175Y  
 MGA LEE 612D [ LRMC M81 U25  
 [ MGA LEE 205Z  
 CIRS RIGHT TIME [ DCSF POST ROCK POWER BUILT 37B8  
 CIRS G381K [ GGRR GILLY'S CPR DOLL 22Y  
 CIRS 381G [ GHGF YOUNG GUN C310  
 [ CIRS ABBY 81NR

CE	BW	WW	YW	MK	TM	CEM	ST	YG	CW	REA	MB
13.1	-1.1	54	73	24	52	5	14.6	-0.27	16	0.57	0

## 102B CPSX 3922M

AMGV1619459 | 3/12/2024 | 3922M **BW**  
 Heifer | Polled | Black, white face | PC 70.3% **45**

OGSG OVERTIME 175D [ GGGE 3G ZIP LINE 266Z  
 MGA OVERTIME 926G [ OGSG OGSG YOKO 175Y  
 MGA LEE 612D [ LRMC M81 U25  
 [ MGA LEE 205Z  
 EGL FOSTERS LO17 ET [ SLC FREEDOM 178F ET  
 CIRS H922K [ EGL PHOEBE G374  
 [ ]

CE	BW	WW	YW	MK	TM	CEM	ST	YG	CW	REA	MB
15	-4.3	41	52	22	43	8	11.4	-0.23	16	0.47	-0.08

## 102C CIRS 9109M

AMGV1619468 | 4/22/2024 | 9109M **BW**  
 Heifer | Polled | Black, white face | PC 43.8% **79**

DCSF POST ROCK POWER BUILT 37B8 [ JRI TOP PRODUCER 282Z3  
 CIRS 44F [ DCSF POST ROCK WILMA 298Z8 ET  
 CIRS POINSETTIA [ EGL FOSTERS LO17 ET  
 [ JRI MS NEW RELEASE 285J65  
 [ ]

CE	BW	WW	YW	MK	TM	CEM	ST	YG	CW	REA	MB
10.6	0.5	56	84	21	49	5	6.9	-0.09	21	0.29	0.06

## 102D CIRS C601M

AMGV1619483 | 4/28/2024 | C601M **BW**  
 Heifer | Polled | Black, white face | PC 43.8% **69**

DCSF POST ROCK POWER BUILT 37B8 [ JRI TOP PRODUCER 282Z3  
 CIRS 44F [ DCSF POST ROCK WILMA 298Z8 ET  
 CIRS POINSETTIA [ EGL FOSTERS LO17 ET  
 [ JRI MS NEW RELEASE 285J65  
 COML 601 [ ]

CE	BW	WW	YW	MK	TM	CEM	ST	YG	CW	REA	MB
13.1	-1.4	49	70	22	46	7	6.9	-0.1	20	0.31	0.06

Today, the Gelford™ breed continues to show growth through carcass data, pink-eye resistance and calving ease data that is being gathered.

### THE GELBIEH-HEREFORD CROSS ADVANTAGE

DISPOSITION  
 MOTHERING ABILITY  
 STAYABILITY AND DOABILITY

## 101D CIRS H1915M

AMGV1619485 | 4/25/2024 | H1915M **BW**  
 Heifer | Polled | Red, white face | PC 43.8% **63**

DCSF POST ROCK POWER BUILT 37B8 [ JRI TOP PRODUCER 282Z3  
 CIRS RIGHT TIME [ DCSF POST ROCK WILMA 298Z8 ET  
 GGRR GILLY'S CPR DOLL 22Y [ DCH HILLE W184 WASP  
 [ GGRR GILLY'S KARA 709T  
 [ ]

CE	BW	WW	YW	MK	TM	CEM	ST	YG	CW	REA	MB
14.6	-2.5	42	69	24	45	7	9.5	-0.24	10	0.4	0.05

*"Our cow herd is based around building replacement females that don't require being pushed on feed and still be easy fleshing, breed early in the breeding season and lay down and calve every year and stay productive through 10 to 12 years of age. We have been using Circle S Gelbvieh bulls for a few years and we are very impressed and seeing easy fleshing and early breeding replacements."*

*-Spurgeon Ranch - Morris, Oklahoma*



Younger set of females that have a bright future. Moderate-made group that are all deep made and appear to be pretty easy doing! Nice complete set of females.

**103A** **CIRS HS40M**  
**AMGV1619434** | 4/2/2024 | HS40M **BW**  
72  
 Heifer | Polled | Red, white face | PC 43.8%

DCSF POST ROCK POWER BUILT 37B8 | JRI TOP PRODUCER 282Z3  
 CIRS RIGHT TIME | DCSF POST ROCK WILMA 298Z8 ET  
 GGRR GILLY'S CPR DOLL 22Y | DCH HILLE W184 WASP  
 | GGRR GILLY'S KARA 709T  
 XP L1 DOMINO 11027 | XP L1 DOMINO 01065  
 | XP L1 DOMINETTE 01073  
**RH L1 DOMINETTE 14069** | RH L1 DOMINO 4043  
 | RH L1 DOMINETTE 7054

CE	BW	WW	YW	MK	TM	CEM	ST	YG	CW	REA	MB
11.7	0.5	51	73	15	40	2	9.4	-0.21	5	0.34	-0.05

**103B** **CIRS 8112M**  
**AMGV1619465** | 4/18/2024 | 8112M **BW**  
80  
 Heifer | Polled | Red, white face | PC 43.8%

DCSF POST ROCK POWER BUILT 37B8 | JRI TOP PRODUCER 282Z3  
 CIRS RIGHT TIME | DCSF POST ROCK WILMA 298Z8 ET  
 GGRR GILLY'S CPR DOLL 22Y | DCH HILLE W184 WASP  
 | GGRR GILLY'S KARA 709T  
 B&D L1 DOMINO 5277 | CL 1 DOMINO 215Z  
**CIRS H112H** | L2 DOMINETTE 09469

CE	BW	WW	YW	MK	TM	CEM	ST	YG	CW	REA	MB
11.7	0.6	53	81	22	50	4	11.7	-0.19	8	0.33	-0.15

**103C** **CIRS H1971M**  
**AMGV1619487** | 5/1/2024 | H1971M **BW**  
78  
 Heifer | Polled | Red, white face | PC 43.8%

DCSF POST ROCK POWER BUILT 37B8 | JRI TOP PRODUCER 282Z3  
 CIRS RIGHT TIME | DCSF POST ROCK WILMA 298Z8 ET  
 GGRR GILLY'S CPR DOLL 22Y | DCH HILLE W184 WASP  
 | GGRR GILLY'S KARA 709T  
 OLEEN 1971

CE	BW	WW	YW	MK	TM	CEM	ST	YG	CW	REA	MB
11.2	0.2	49	80	24	48	5	9.5	-0.23	10	0.4	0.08

**LOTS 104-105:** These girls are out of a couple of bulls we sold to Andrew Knepp - influenced by Traction and Young Gun - and most are out of black or black baldy commercial cows themselves. Bred back to CIRS Power Cat for fall calves themselves. Breeding dates and preg check confirmation available sale day.

**104A** **ET #142**  
 Heifer | Red, white face | 11/6/2023  
 Sire: H72H AMGV1504245 Dam: BLACK COML COW  
 Natural service bred 12/15/2024 to Powercat.

**104B** **ET #140**  
 Heifer | Red, white face | 11/13/2023  
 Sire: 4-8G AMGV1473136 Dam: BWF COML COW  
 Natural service bred 12/29/2024 to Powercat.

**104C** **ET #118**  
 Heifer | Red | 11/14/2023  
 Sire: H72H AMGV1504245 Dam: BLACK COML COW  
 Natural service bred 2/22/2024 to Powercat.



Lots 104 and 105 sired by past Going to Grass bulls.

**105A** **ET #763**  
 Heifer | Black | 10/31/2023  
 Sire: H72H AMGV1504245 Dam: BLACK COML COW  
 Natural service bred 12/14/24 & 1/4/2025 to Powercat.

**105B** **ET #114**  
 Heifer | Black | 11/7/2023  
 Sire: 4-8G AMGV1473136 Dam: BLACK COML COW  
 Natural service bred 1/1/2025 & 2/24/2025 to Powercat.

**105C** **ET #105**  
 Heifer | Black | 11/10/2023  
 Sire: 4-8G AMGV1473136 Dam: RED COML COW  
 Natural service bred 12/26/2024 to Powercat.

**105D** **ET #105**  
 Heifer | Black | 11/14/2023  
 Sire: 4-8G AMGV1473136 Dam: RED COML COW  
 Natural service bred 12/31/2024 to Powercat.



All heifers in lots 104 and 105 are pasture exposed to CIRS Powercat 856K.



**LOT 106:** Here's a set of really good females Kendall put together! All of these females are out of our bulls and calves at side are out of our bulls as well! Really good set of pairs! The work is already done on these! Sit back and watch the Circle S Gelbvieh genetics do work for you this summer. January and March calves at side.

**106A** **ET #2307**

Heifer | Black | 2023

Multi-sire group: AMGV1532279,AMGV1532557 or AMGV1559342

Lot 106A calf: black bull, born 1/26/2025, sired by AMGV1590637.

**106B** **ET #2306**

Heifer | Black | 2023

Multi-sire group: AMGV1532279,AMGV1532557 or AMGV1559342

Lot 106B calf: black heifer, born 3/2/2025 sired by AMGV1590637.

**106C** **ET #2301**

Heifer | Red | 2023

Multi-sire group: AMGV1532279,AMGV1532557 or AMGV1559342

Lot 106C calf: red heifer, born 3/3/2025 sired by AMGV1559319



These bulls are some of those sold in previous Going to Grass Sales to the Steinart family. All of the heifers or their calves in Lot 106 are influenced by Circle S bulls or females.

**Commercial Heifers with Spring Born Babies at Side**

Josh Whitehill - Johnny's brother-in-law - has consigned two pens of commercial pairs. The girls are a really good set of commercial/Gelbvieh influenced females! Lots of capacity and volume in them - put a good Circle S bull with these girls to increase the Gelbvieh influence and watch the higher percentage increase your bottom line.

**MORE INFORMATION COMING SALE DAY!**

**107A**

---



---

**107B**

---



---

**107C**

---



---

**108A**

---



---

**108B**

---



---

**108C**

---



---

# Circle S Ranch

2815 Navajo Rd  
Canton, KS 67428  
circle\_s@hometelco.net



**John Shearer**  
**620-654-6507**

**Johnny Shearer**  
**620-654-6731**

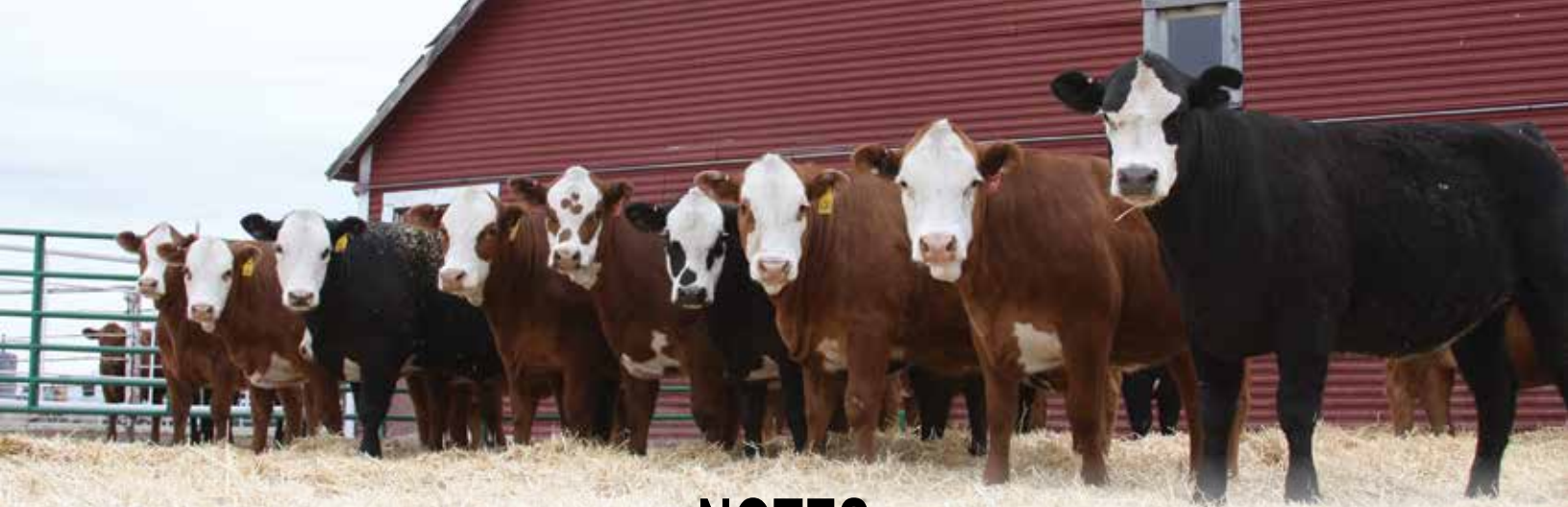


## 2025 PRICE LIST

	Retail per Roll	Retail Pallet 16 Rolls/ Pallet
48" x 9840'	\$229.00	\$219.00
48" x 11800'	\$269.00	\$259.00
51" x 9840'	\$239.00	\$229.00
51" x 11800'	\$279.00	\$269.00
64" x 7000'	\$219.00	\$209.00
64" x 8000'	\$249.00	\$239.00
64" x 9700'	\$279.00	\$269.00
67" x 7000'	\$229.00	\$219.00
67" x 8000'	\$259.00	\$249.00
67" x 9000'	\$279.00	\$269.00

**HELP MAKE AMERICA GREAT AGAIN**  
**ONE BALE AT A TIME**





- NOTES -



*Building a Legacy for Over 30 Years!*

## A CIRS RIGHT TIME

AMGV1425620 | 01/30/2018 | 22YF | Bull  
Homo Polled | Red | PB 87.5%

JRI TOP PRODUCER 282Z3  
DCSF POST ROCK POWER BUILT 37B8  
DCSF POST ROCK WILMA 298Z8 ET

JRI POP A TOP 197T83  
JRI MS GRAND CANYON 282S2  
TAU MR KRUGERRAND 70M 130P  
DCSF POST ROCK WILMA 261P1 ET

DCH HILLE W184 WASP  
GGRR GILLY'S CPR DOLL 22Y  
GGRR GILLY'S KARA 709T

DCH HILLE M118 MAJESTY  
DCH HILLE M121 MACARONI  
GGRR GILLY'S WINNER R26  
GGRR GILLY'S P87

CE	BW	WW	YW	MK	TM	CEM	ST	YG	CW	REA	MB
12	0.3	70	108	25	60	4	15	-0.33	19	0.75	-0.02

## B HILLE G253 ET

AMGV1471334 | 03/19/2019 | G523 | Bull  
Homo Polled | Red | PB 90.6%

BNC AT EASE A357  
FMH 2020 MR AT EASE 510C  
TJB 105X MS VELVET

VRT LAZY TV SAM U451  
BNC MISS HOJER Y045  
DCH HILLE M118 MAJESTY  
TJB VELVET 919U ET

DAR PURE POWER  
DCH HILLE T801 THREE SPEEDET  
DCH HILLE L232 LANA

FHG FLYING H EXCLUSIVE  
DAR MAVIS 206M  
EGR GUS 717G  
RRTO MISS COCOA

CE	BW	WW	YW	MK	TM	CEM	ST	YG	CW	REA	MB
14	1.4	67	104	34	68	8	17	-0.18	43	0.86	0.22

## C DDGR LOBO 5J

AMGV1507111 | 02/25/2021 | 5J | Bull  
Homo Polled | Red | 81.25% GV

JRI GENERAL PATTON 213B97 ET  
JRI TRADE SECRET 253G486  
JRI MS SECRET BLEND 253E386 ET

JRI POP A TOP 197T83  
JRI MS EXTRAVAGANT 213T87  
JRI SECRET INSTINCT 254U83  
JRI MS SPECIAL BLEND 253W28

VRT LAZY TV NOTCH A781  
DDGR 124G  
DDGR LILY 45U

HJS HOLDEN TOP NOTCH 011  
KRT LAZY TV MS RIP M454  
RID R COLLATERAL 2R  
DDGR MANGO 45L

CE	BW	WW	YW	MK	TM	CEM	ST	YG	CW	REA	MB
10	2.5	73	111	15	52	4	17	-0.20	23	0.47	0.15

## D CIRS KORNERSTONE 22EK

AMGV1548097 | 03/09/2022 | 22EK | Bull  
Homo Polled | Red | PB 89.1%

FMH 2020 MR AT EASE 510C  
DCH HILLE G523 ET  
DCH HILLE T801 THREE SPEEDET

BNC AT EASE A357  
TJB 105X MS VELVET  
DAR PURE POWER  
DCH HILLE L232 LANA

DCSF POST ROCK POWER BUILT 37B8  
CIRS 22YE  
GGRR GILLY'S CPR DOLL 22Y

JRI TOP PRODUCER 282Z3  
DCSF POST ROCK WILMA 298Z8 ET  
DCH HILLE W184 WASP  
GGRR GILLY'S CPR DOLL 22Y

CE	BW	WW	YW	MK	TM	CEM	ST	YG	CW	REA	MB
12	2.8	84	134	32	74	6	17	-0.25	39	0.97	0.12

## E CIRS 44F

AMGV1443297 | 03/23/2018 | 4F | Bull  
Polled | Red | PB 87.5%

JRI TOP PRODUCER 282Z3  
DCSF POST ROCK POWER BUILT 37B8  
JRI TOP PRODUCER 282Z3

JRI POP A TOP 197T83  
JRI MS GRAND CANYON 282S2  
TAU MR KRUGERRAND 70M 130P  
DCSF POST ROCK WILMA 261P1 ET

EGL FOSTERS LO17 ET  
CIRS POINSETTIA  
JRI MS NEW RELEASE 285J65

SLC FREEDOM 178F ET  
EGL PHOEBE G374  
JRI PD RESOURCE 197E51  
JRI PLD SWEET THING 285F65ET

CE	BW	WW	YW	MK	TM	CEM	ST	YG	CW	REA	MB
9	1.3	66	90	20	53	4	10	0.21	25	0.56	-0.11

## F CORVETTE J168

AMGV1507004 | 02/28/2021 | J168 | Bull  
Homo Polled | Red | PB 93.8%

DL JEN-TY DYNAMITE  
HDG HILLSDOWN FINNEGAN 4F  
HDG AVERY 13D

FRL FIR RIVER RED CHILLI 451Y  
DL JEN-TY CINDY 273U  
JRI POP A TOP 197T83  
HDG BAYLEE 14B

RUP RUPPLE YUKON 301P  
LRSF SNAZZY C79  
LRSF SNAZZY Y26

KCF BENNETT IDEAL G182  
RUP RASPBERRY 137M  
JRI PRIME CUT 406S30  
LRSF SNAZZY W34

CE	BW	WW	YW	MK	TM	CEM	ST	YG	CW	REA	MB
14	-1.5	70	103	27	62	8	12	-0.09	39	0.42	0.16

## G CIRS HALEN 717H

AMGV1489499 | 01/25/2020 | 717H | Bull  
Homo Polled | Black | PB 99%

FMGF BLUE'S IMPACT 001X  
GHGF YOUNG GUN C310  
GHGF CONTESSA 310T

HYEK BLACK IMPACT 3960N  
FMGF ONCE IN A BLUE MOON ET  
GHGF MATE 47P  
JBOB 3103K ET

JOB DANELL RASCAL 25Z  
TSP 417B  
TSP PARIS 922P

JOB DANELL RESOLUTION 26U ET  
KHR JEANETTE 510R  
SEGA M I A 158M  
SEGA JASMYNE 922J

CE	BW	WW	YW	MK	TM	CEM	ST	YG	CW	REA	MB
14	-1.6	51	73	29	54	3	10	13	16	0.84	0.08

## H TMMW MR MONTANA 231E

AMGV1410837 | 10/31/2017 | 231E | Bull  
Homo Polled | Black | PB 93.75%

KHR 01Z  
KHR 79B  
KHR 267Z

KHR 26P  
KHR 010X  
KHR 25X  
KHR 624S

JKGF 43U  
TMMW MISS GRANITE 150Z  
TMMW BLK BREEZE KRUGER

DCSF POST ROCK GRANITE 200P2  
JKGF SKYLIN  
TAU MR KRUGERRAND 70M 130P  
BNW BREEZE 0123K

CE	BW	WW	YW	MK	TM	CEM	ST	YG	CW	REA	MB
19	-3.2	72	106	26	62	13	15	-0.20	26	0.59	0.17



# AGA Sale Terms & Conditions

**TERMS:** Terms of sale are cash unless satisfactory credit arrangements have been made with the seller previous to the sale of any animal so affected.

**BIDDING:** All animals sell to the highest bidder. Any disputes or challenges regarding bids shall be settled by the auctioneer and his decision shall be final. Mailed or telephoned bids may be forwarded to the auctioneer and will be handled with strictest confidence. Prior arrangements for telephone bids at sale time must be made with the auctioneer.

There are no warranties, expressed or implied, by either the auctioneer or seller, except as set forth herein, as to the merchantability or fitness for any particular purpose of any animal offered in this sale. The right to bid or the right to reject the final bid, if done before hammer falls, is reserved for the seller.

**ACCURACY OF PEDIGREE:** The pedigree shown for each animal cataloged, offered and sold as a registered animal has been obtained from either the owner, breeder or the records at the American Gelbvieh Association.

Neither the auctioneer nor the seller warrants the accuracy of the information shown on the pedigree and shall not be responsible to the purchaser or his assigns for any damages in the event the information shown on the pedigree is later determined to be incorrect for any reason, including but not limited to, errors discovered through blood-type disease.

**INSURANCE OF PURCHASES AND RISK:** All animals are at the owner's risk and become the property of the purchaser when declared sold by the auctioneer. Arrangements have been made to have insurance available when making settlement.

**ACCIDENTS:** All precautions possible will be taken to protect the safety of buyers and others attending the sale. Nevertheless, no responsibility will be assumed by the auctioneer or the host farm in the event of accidents or loss or damage of property.

**HEALTH TESTS:** All animals have been tested and found negative for brucellosis and tuberculosis. The sale veterinarian will assist buyers on health status for specific states and testing for anaplasmosis and blue tongue if this is required for export to Canada.

## BREEDING GUARANTEES AND DEFINITIONS

**FEMALES:** Females are guaranteed to be breeders with the exception of female calves sold at side of dam, injury or disease occurring to the animal after time of sale, gross negligence or willful misconduct on the part of the purchaser, females used in ovum transplant after time of sale, females shown competitively after time of sale and cows sold with calf at side.

Cow represented as being "safe-in-calf" will have been examined and declared safe by a licensed veterinarian within two weeks of sale and will be accompanied by a veterinarian certificate to this effect. They are considered breeders without further guarantee. Females with a "due to calve" date in the remarks column are considered safe-in-calf. A bred female is a female known to have served by a bull either by natural breeding or artificial insemination, but it does not necessarily mean that this female is safe in calf to that bull. An open heifer is a virgin heifer that has never been exposed to a bull either through natural service or artificial insemination. An open cow is a cow that has not been exposed to a bull either through natural service or artificial insemination since the birth of her last calf. Calves sold off their dams (split pairs) shall carry the full breeding guarantee.

**MALES:** Bulls are guaranteed to be breeders (defined as the ability to settle healthy cows by the time they are 18 months of age) with the exception of bull calves sold at the side of dam, injury or disease occurring to the animal after time of sale and gross negligence or willful misconduct on the part of purchaser. Any guarantees with respect to the ability to freeze semen shall be made by separate agreement between buyer and seller.

**ADJUSTMENTS:** The following adjustments do not preclude the right of the buyer and seller to mutually agree upon other terms and conditions for settlement of any dispute.

All claims for adjustment or refund must be made in writing either within six (6) months from the date of the sale or no longer than six (6) months

after the animal reaches eighteen (18) months of age, whichever occurs first, with the exception of claims involving misrepresentation or service sire or as otherwise provided herein. If a female is sold as "safe-in-calf" to a given sire or sires on a specified date or dates and proves not to be as represented, the buyer is entitled to a refund of the purchase price from the seller up return of the animal to the farm of the seller at the seller's expense. In the event an animal is claimed to be a non breeder, the animal may be returned to the farm of the seller, at the buyer's expense, if in good physical condition and the return is in compliance with the health requirements of the state where purchased. The seller shall be entitled to a six (6) month trial period in which to prove the animal is a breeder, following the return of the animal. If, at the end of six (6) months, the seller is unable to prove the animal a breeder, the seller shall, at his option, replace the animal with another of equal value or refund the purchase price. Either option shall be at the purchaser's risk. No guarantee is given concerning a pregnant females gestation period of foreign bodies after the animal has been sold, nor for sickness not apparent at sale time.

If a female is sold as "open" and proves to be with calf at time of sale, and examined pregnant with sixty (60) days after sale, the buyer may return the animal to the farm of the seller prior to calving, for a full refund of the full purchase price for another mutually acceptable adjustment. It shall be the obligation of the seller to bear any expense incurred for transportation of the animal in question to the farm of the seller.

Any adjustment provided herein, if selected, shall absolve the seller from further liability.

## HORNED - POLLED - SCURRED - DEFINITIONS AND GUARANTEES

**HORNED:** An animal with a horn growth affixed to the skull that has or has not been removed.

**POLLED/SCURRED:** An animal with rudimentary horn growth that will not develop into a horn. The rudimentary horn growth may or may not become affixed to the skull at an older age.

**POLLED:** An animal with absence of horn growth (An animal can have scurs and develop scurs polled).

**SMOOTH -POLLED:** A smooth-polled individual has no scurs and does not develop scurs later in life.

**AGA REGISTRATION AND TRANSFERS:** Each animal with is cataloged, offered and sold as a registered animal has a certificate of registry available at time of sale. When animal is sold as "eligible for registry" or "registry applied for," the seller shall be responsible for obtaining the certificate of registry and for the proper transfer of the certificate to the purchaser including full payment of transfer fees.

**PURCHASER'S RISK:** Each animal becomes the property of, and thereof is also the risk of, the purchaser as soon as it is sold, except it shall be the obligation of the seller to see that the animals are fed and cared for free of charge to the buyer until loaded for shipment or until expiration of forty-eight (48) hours after the sale, whichever occurs first.

**ANNOUNCEMENTS:** Any errors or changes in information contained in the catalog will be announced from the auction block, such announcements shall take precedence over information contained herein. The sale will be tape recorded for future reference.

**RIGHTS AND OBLIGATIONS:** The above terms and conditions of sale constitute a contract between the buyer and seller of each animal and shall be equally binding transaction and the rights and obligations of the parties connected there to are not covered by the above terms and conditions of this sale. Neither the host farm, auctioneers nor any other person connected with the management or conduct of the sales assumes any liability, legal or otherwise, except as set forth above.

These terms and conditions of sale recommended by the American Gelbvieh Association (AGA) as a guide for the use by its members and auction sales of breeding animals. These terms and conditions of sale shall constitute a contract between the buyer and seller of each animal and be equally binding on both. The AGA assumes no liability, legal or otherwise, for the enforcement of these terms and conditions of sale or for the failure of either buyer or seller or their agents to perform their duties and obligations thereunder.



Circle S Ranch  
John Shearer  
PO Box 239  
Canton, KS 67428

ADDRESS  
SERVICE REQUESTED

TIME SENSITIVE MATERIAL - DO NOT DELAY!!

Circle  Ranch

